

# REETH & DISTRICT GAZETTE

ISSUE NO. 360

JUNE 2026



*Your local news magazine  
for the two dales*

**PRICELESS BUT DONATIONS WELCOME**

## Time Flies

### Surprise presentation celebrates Ken Guy's dedication to winding the Muker church clock

Residents of Muker gathered at Muker Public Hall on 17 April 2026 to honour Ken Guy with a surprise presentation marking his 50 years of service winding the village church clock.

The presentation was made by Louise Metcalfe, secretary of the Muker Clock Committee, who gave Ken a framed montage of photographs of him winding the clock, together with a Yorkshire hamper. The montage will be displayed in Muker Public Hall for residents and visitors to enjoy.

The celebration continued afterwards with a social gathering at the Farmers Arms in Muker.

The occasion marked an exceptional milestone and recognised a remarkable contribution to village life. Over five decades, Ken's dedication has helped keep the church clock running accurately, preserving an important and much-valued feature of the local

community.

The event was a fitting tribute to Ken Guy's longstanding commitment, recognising both his reliability and the quiet but important role he has played in maintaining a cherished Muker.



Public Hall on 17 April 2026 to honour Ken Guy with a surprise presentation marking his 50 years of service winding the village church clock.



# REETH AND DISTRICT GAZETTE LTD

## Gazette Management Committee

**Chairman:** Susan Miller

Longstone, Low Row, Richmond  
DL11 6NA

Tel: 01748 886 358

E-mail: chairman@reethGazette.co.uk

**Secretary:** Sue Alderson

Holme View, Low Row, Richmond,  
DL11 6PE

Tel: 01748 886 292

E-mail: secretary@reethGazette.co.uk

**Editor:** Jackie Pope

2 Pinfold, Peter Lane, Burton Leonard,  
Harrogate, HG3 3RZ

Tel: 07885 498676

E-mail: editor@reethGazette.co.uk

**Treasurer:** Andrew Bedford

Glory Be, Blades, Richmond, DL11 6PS

Tel: 01748 886 974

E-mail: treasurer@reethGazette.co.uk

**Subscriptions:**

E-mail:

subscription@reethGazette.co.uk

**Distribution:** Marilyn Brown

The Cottage, Healaugh, Richmond DL11  
6UA

Tel: 01748 884111

Email:

distribution@reethGazette.co.uk

Published by

**The Reeth & District Gazette Ltd.**

Company Number: 06541854

c/o The Company Secretary

Andrew Bedford, Glory Be, Blades

Richmond, North Yorkshire DL11 6PS

Tel: 01748 886 974

E-mail: treasurer@reethGazette.co.uk

No material may be reproduced in whole or in part without permission. Whilst every care is taken for accuracy, the publishers cannot be held legally responsible for any errors or opinions in articles, listings or advertisements.

## ADVERTISING

For information on advertising and prices, please contact the treasurer. Advertising copy, should be sent to the editor.

The editor reserves the right not to publish any advert or article considered to be inaccurate or misleading.

All articles or items for inclusion should be sent to the editor

E-mail: editor@reethGazette.co.uk  
or left at Reeth Post Office.

## Donations

Can be made through our collecting tins in: CB Inn, Copper Kettle, Dales Bike Centre, Hudson House, Muker Tea Shop and Store, Punch Bowl Inn, Red Lion, Reeth Gift Shop, Reeth Post Office, Swaledale Woollens, and The Old School in Muker or by bank transfer to 77-91-29 40807260. using the reference "Supporter". Thank you.

## Gazette Deadlines

The deadlines for the next two months are:

July issue: June 10th

August issue: July 13th

Please Note: We will endeavour to publish all suitable items submitted by the deadline date but this is at the sole discretion of the editor.

**Posting The Gazette:** Issues can vary in page number and so weight over the year. Postage will require a Large Letter size and will likely cost £2.00 2nd class, or £3.60 1st class but please check with the Post Office.

## Reeth GP practice services

### ICB approves branch surgery application



We Care  
We Connect  
We Innovate



NHS Humber and North Yorkshire Integrated Care Board (ICB) has approved an application for a branch surgery in Reeth, helping to maintain local access to primary care when Reeth Medical Centre shut at the end of May.

The application from Central Dales Practice will support around 1,500 patients, who will transfer to the practice as the Reeth Medical Centre contract ends.

Without a local surgery, patients in Swaledale and Arkengarthdale would have had to travel to Hawes, Aysgarth or elsewhere for appointments and prescriptions, which many residents told the ICB would be perilous in winter and would be particularly challenging all year round for older and more vulnerable people.

Subject to securing suitable local premises, the Reeth branch surgery will initially open two days a week (Tuesdays and Thursdays), offering face-to-face GP and nursing appointments from 9am to 6pm, supported by Richmondshire Primary Care Network. On the days when the branch surgery is not open, people will still be able to access the Central Dales surgeries in Aysgarth or Hawes.

Alex Seale, the ICB's senior responsible officer for neighbourhood working, said: "We know how deeply

local people value having access to healthcare close to home, particularly in a very rural community like Reeth, and we tried very hard to find an alternative provider who could viably take over the Reeth Medical Centre contract, unfortunately, without success.

"However, establishing a branch surgery is a practical and proportionate way to protect access for patients following the handback of the Reeth Medical Centre contract, while ensuring services remain safe and sustainable for the long term.

"The ICB acknowledges that without a presence in Reeth, patients would face significantly longer journeys, which we know can act as a real barrier to care, and we are grateful to Central Dales Practice and the wider GP practice community in Richmondshire for stepping forward with a solution that reflects the ICB's commitment to reducing geographical health inequalities, when we were seemingly out of options."

Central Dales Practice Managing Partner, Lynn Irwin, added: "GP Practices across Richmondshire have been united in working together to retain vital services in Reeth and since news emerged that we were looking into establishing a branch surgery, we've been blown away by people's support.

"It's been wonderful to see how the Dales communities have rallied in recent weeks, and I know we can count on residents' patience and understanding while we work through our plans."

CLlr Yvonne Peacock, North Yorkshire Council elected representative for the Upper Dales division added: "Residents

## REETH AND DISTRICT GAZETTE LTD

have been very clear that losing face-to-face healthcare in Reeth would have been extremely worrying. A branch surgery provides reassurance that people won't be left without local access, while recognising the realities of delivering services in a very rural area. I welcome the collaborative approach that's been taken to reach this point."

# Hindsight

## Accountants

- Bookkeeping, Payroll and VAT Returns
- Annual accounts and tax returns
- Company Formations

11 Finkle Street, Richmond, DL10 4QA

Tel: 01748 822049

Email: [info@hindsightaccountants.co.uk](mailto:info@hindsightaccountants.co.uk)

### Dementia Forward's Tan Hill Challenge Walk

**Sunday 26<sup>th</sup> July**  
Registration at 8:30am  
Tan Hill Inn, Arkengarthdale, Richmond, DL11 6ED

Sign up for our 15-mile sponsored walk to raise vital funds for your local dementia charity



The circular route starts and finishes at the famous Tan Hill Inn, Britain's highest pub at 1,732 feet above sea level. The walk takes in stunning scenery including Ravenscalf (home to the Yorkshire Sheepcross), Keld, Swinner Gill and part of the Pennine Way.

**Entry £20**  
Including Breakfast Sandwich, Goody Bag and T-Shirt

To book your place, use the details below or scan the QR code:  
 ☎ 01785 601224    🌐 [www.dementiaforward.org.uk](http://www.dementiaforward.org.uk)    👤 [amy.senior@dementiaforward.org.uk](mailto:amy.senior@dementiaforward.org.uk)

In aid of **Dementia Forward**    Kindly sponsored by **HARRIS IRWIN ARCHITECTS**

Registered Charity Number: 1148235



## Hudson House

Your valuable community asset  
**Rooms for hire**

Suitable for meetings, lectures, talks, training or social events.

**The Meeting Room** - maximum of 30 people.

**The Meeting Place** (evenings only) - maximum of 10 people.

Access to PCs, Internet, printer, photocopier, laminator and kitchen facilities.

**The Orchard Gallery for hire**

Suitable for exhibitions of paintings, photographs and other artwork.

Own entrance through the garden.

Sales can be handled for you.

For prices (special rates for community use), bookings or more information please

contact Jill May on 01748 884 485 or [admin@hudsonhouse.info](mailto:admin@hudsonhouse.info)

## REETH CORNERSHOP & POST OFFICE

**Groceries**

**Beers, Wines & Spirits**

**Milk, Dairy & Meat**

**Fruit & Veg**

**Household Goods**

**Books & Maps**

**Cards & Gifts**

**FOR ALL YOUR NEEDS**

**01748 884201**

### Lambing Service

The Rev Canon Caroline Hewlett led a Lambing Service, A Celebration of Sheep, on Sunday 3rd May in St Andrew's Grinton, to celebrate the end of lambing time and thank farmers for their hard work all year round. It was well attended by farming families, and the special guests were the lambs in church! Pictures (including front cover picture) from Scenic View Gallery, Reeth.





Do YOU or someone you know have a visual impairment?

Do you struggle to read the newspaper?

Would you like to listen to the local news, delivered free of charge, twice a month?

If so, **Richmond and Dales Talking Newspaper** is for you.

Ring the helpline - **07876 705550**

## MICHAEL GUY ELECTRICAL

FULLY QUALIFIED ELECTRICIAN

Over 20 years experience working in the dales in all areas of electrical work.

Some of my services include:

Complete rewires | Electrical installation condition reports | Electrical vehicle charging points | Additional & alterations to socket & lighting points | Replacement of storage heaters to modern eco panel heaters.

Contact Michael :

**07980 130017**

Mail: [info@michaelguyelectrical.co.uk](mailto:info@michaelguyelectrical.co.uk)

Website: [Michaelguyelectrical.co.uk](http://Michaelguyelectrical.co.uk)

**APPROVED ROINTE HEATER INSTALLER  
NICEIC APPROVED CONTRACTOR**

## SWALE HAIR SPA



LOOK GOOD- FEEL GREAT -BE-WELL.

At Swale Hair Spa, we offer a complete range of **hair care services** designed to help you look good, feel great, and truly unwind. From **precision cutting** and **bespoke colouring** to **restorative treatments** and **scalp care rituals**, every appointment is tailored to you. Whether you're visiting for everyday maintenance, a seasonal refresh, or a little time out for yourself, our **calm**, welcoming space and expert team are here to care for your hair and your **wellbeing**.

We are open **Tuesday- Friday**, plus every 3rd **Saturday**.

Call us on: 01748 884627

Email us: [info@swalehairspa.com](mailto:info@swalehairspa.com)  
[www.swalehairspa.com](http://www.swalehairspa.com)

**WANTED!**



Well maybe not your country, but the **Reeth Gazette needs you** if you are good with numbers, have some knowledge of Sage Accounting and a few free hours each month. As Treasurer of the Gazette, you'll only need to attend about 4 meetings a year (online if required) and everything else can be done from the comfort of home. You don't even need to live anywhere near Reeth. If you want to help the Gazette survive and flourish, speak to Andrew Bedford 07957 207579



**John Blenkiron & Sons**  
Funeral Directors

Incorporating Simon Barningham, Reeth



**Thinking about a Funeral Plan?**



A Choice Funeral Plan could give peace of mind and help your family with the cost of arranging a funeral and understanding your personal wishes.

For more information on our plans, visit your local branch, call us or go to [blenkironson.co.uk/choice](http://blenkironson.co.uk/choice)

**24hr 01748 850033**

Branches in Richmond, Barnard Castle, Catterick

Terms, conditions and limitations apply.

John Blenkiron & Sons Funeral Directors is a trading name of Funeral Partners Limited (Funeral Partners) which distributes Choice Funeral Plans, which are provided by Alternative Planning Company Limited (APCL). Funeral Partners is an appointed representative of APCL. APCL is authorised and regulated by the Financial Conduct Authority with firm reference number 965282. APCL and Funeral Partners are part of the Funeral Partners Group.



- Carpets ● Wood Flooring ● Laminates
- Vinyl Tiles ● Vinyl Sheets ● Rugs ● Accessories

**nh** flooring

*The Carpet & Flooring Specialist*

- Amtico
- Karndean
- Panaget
- Brintons
- Westex
- & more



Contact us now for a **FREE** quote, advice or more information

t: 01748 822834 m: 07789 996526  
e: [enquiries@nhflooring.co.uk](mailto:enquiries@nhflooring.co.uk)  
w: [www.nhflooring.co.uk](http://www.nhflooring.co.uk)



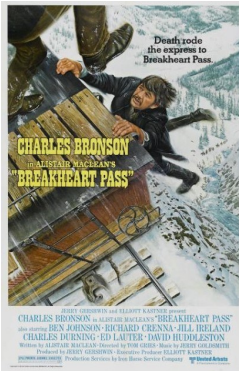
Unit 6 Borough Court, Borough Road, Gallowfields Trading Estate, Richmond. DL10 4SX



**Going Loco #2**  
**By John Hunter**

Last time we featured movies where *most* of the action takes place on a train, but there are of course many pivotal train-bound scenes in numerous other films. In all three versions of **The Thirty Nine steps**, our hero Richard Hannay travels to Scotland on the train, and in both the original Hitchcock, and its *almost* frame for frame 1950's re-make, there's the famous action on the Forth Bridge. Fisticuffs within the confines of train carriages are always exciting affairs, and agent 007 has a couple of humdingers. Firstly, in the second Bond movie **From Russia with Love** (1963) Spectre assassin Red Grant almost gets the better of Sean Connery in a master class of close quarter scrapping - mirrored later in the series with Roger Moore and Tee Hee in **Live and Let Die** (1973). In both cases the glamorous Bond girl is not far away to mop the fevered brow of the victor! First prize for the 'train fight' award however goes to the small screen **'Human Target'** pilot episode, where a prolonged fight is featured between hero Mark Valley and a nasty assassin - lasting over two whole minutes. Western **'Breakheart Pass'** (1975), based on the Alistair MacClean thriller, has a train travelling up into the Rockies to investigate a supposed Diphtheria epidemic - actually a ruse to steal armaments. Throw in some

Indians, intrigue and a great train smash (filmed for real) and it's well worth a watch. Another western climax concluding in a superb crash brings the epic **'How the West was Won'** (1962) to a close, with Marshal George Peppard fighting off Eli Wallach's band of desperadoes. In a more contemporary setting, Cecil B De Mille's circus epic **'The Greatest Show on Earth'** (1952) starring Charlton Heston and James Stewart (almost unrecognisable under clown make-up for the whole running time) climaxes with a superb train smash, unfortunately largely filmed using rather obvious miniatures.



Portmanteau Hammer horror **'Dr Terror's House of Horrors'** (1965) has the lead characters in a carriage compartment as they relate their stories - no prizes for guessing who is there to meet them at their inevitable 'destination'. Both the **'Titfield Thunderbolt'** (1953) and **'The Great St Trinian's Train Robbery'** (1966) feature runaway train shenanigans, as does the opening of **'Maze Runner, Death Cure'** (2018), and the unforgettable climax to the first **Mission Impossible** film (1996) has a fictitious bullet train entering the 'chunnel' - with Tom Cruise battling it out on the train roof at breakneck speeds. It's all rather far-fetched, but filmed with great panache by cinematographer Stephen H Burum and designed by the director himself, the great Brian de Palma. Accolades to George Lucas' effects team ILM for digitising it all into a very believable whole.

# REETH AND DISTRICT GAZETTE LTD

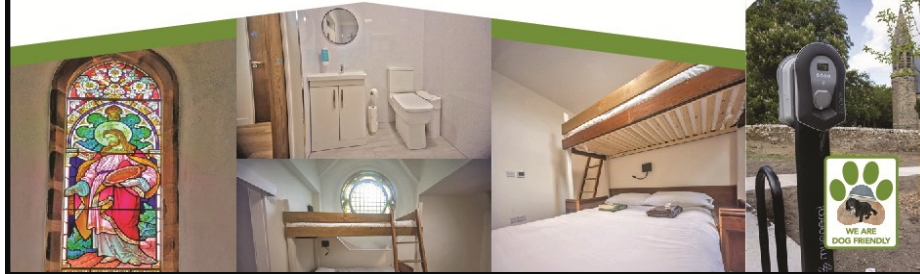
*A new and unique place to stay in Hudswell near Richmond, North Yorkshire*



**St. Michael's**  
LODGE  
[stmichaelslodge.com](http://stmichaelslodge.com)

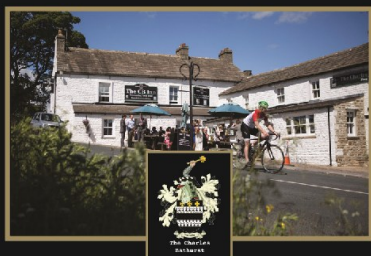
Hudswell Community Charity have acquired our former parish church and thoughtfully converted it into a **Lodge for walkers, cyclists and other visitors** to the Yorkshire Dales.

01748 343022 / 07521158338  
[enquiries@stmichaelslodge.com](mailto:enquiries@stmichaelslodge.com)



## The Charles Bathurst Inn ARKENGARThDALE

Outstanding fresh food served in a warm & friendly atmosphere.  
19 en-suite bedrooms with amazing views.  
Available for dinners, weddings & meetings.



**FOR FURTHER DETAILS  
OR TO RESERVE A TABLE**

Telephone: 0333 700 0779  
Website: [www.cbinn.co.uk](http://www.cbinn.co.uk)

## The Punch Bowl Inn

Outstanding fresh food served in a warm & friendly atmosphere, plus 12 cosy en-suite bedrooms with stunning views of Swaledale.



**FOR FURTHER DETAILS  
OR TO RESERVE A TABLE**

Telephone: 0333 700 0779  
Website: [www.pbinn.co.uk](http://www.pbinn.co.uk)

**Rivers4Life at the Dales  
Countryside Museum**

**Rivers4Life** is the brand new exhibition opening at the Dales Countryside Museum (DCM), Hawes on Saturday 6 June, running to 27 September. This family-friendly exhibition, packed with information about the work of the Yorkshire Dales Rivers Trust, promises to engage and inspire everyone to support its mission to create wild, natural rivers, valued by all.

Highlights include art works and creative projects produced in the Rivers4Life workshops run with Yorkshire Dales schools and community groups, including a Richmond care home and two refugee groups in Catterick and Ripon. Additionally, the exhibition will showcase the Yorkshire Dales Rivers Trust photography competition winners whose work celebrates Yorkshire Dales rivers, catchments and their wildlife through the seasons.

There will also be an exciting bespoke community theatre performance - **Tributaries** - about the River Ure at the DCM on 27 and 28 June and at the Ripon Workhouse Museum during the Ripon Theatre Festival on 4 July.

The Rivers4Life exhibition and the theatrical production are part of the Yorkshire Dales Rivers Trust's National Lottery Heritage Funded Rivers4Life project, which is a three-year project combining the arts and science, to enable the Trust's work to reach a wider audience.

Full details of all dates, venues and how to book can be found at: <https://www.ydrt.org.uk/rivers4life>



**HARKERS COACHES**



Hill Top Garage, Reeth  
Tele: 01748 884533  
Pauls Mob: 07703 559959

**COACH,  
PRIVATE  
HIRE &  
GARAGE**

Coach, Mini Bus and private taxi hire  
General vehicle maintenance including services, tyre supply, fitting and balancing.

J. N. & E.  
**Capstick**  
INSURANCE CONSULTANTS LIMITED

WINNER  
CIR COMMERCIAL INSURANCE AWARDS 2017  
BROKER CLAIMS TEAM OF THE YEAR

Specialising in farm, home and motor insurance

A local company, small enough to care, big enough to compete. So give us a try.

36 Main Street, Sedbergh LA10 5BP Tel: 015396 20124 Fax: 015396 20791	Market Square, Kirkby Stephen CA17 4QT Tel: 017683 72285 Fax: 017683 72346	Hawes Auction Mart Buttersett Road, Hawes North Yorkshire DL8 3NP Tel: 07498 041 187 Open during auction hours
---	--	--

[www.capstickinsurance.co.uk](http://www.capstickinsurance.co.uk)

J.N. & E. Capstick Insurance Consultants Limited is authorised and regulated by the Financial Conduct Authority

# REETH AND DISTRICT GAZETTE LTD

## St Andrew's, Grinton

**Heritage Day, Saturday 4<sup>th</sup> July from 10am to 4pm.** There will be:

- *Textile craft displays* including spinning, weaving, rug hooking, knitting and crochet.

- *Craft Goods and Craft Stash* stalls

- *Refreshments* and freshly baked cakes and scones

- Walk round the historic church viewing the significant features

- *Bell Tower Tours*: the tower has had a good bit of work carried out in it last year. Tours this year will be held at 1030, 1145, 1330 and 1445, and they can be booked on the day in the church. They will cost £10 per person with a maximum of 8 per group. Children under 16 must be accompanied by an adult, and children under 10 are excluded.

- *Dogs are welcome*

If anyone would like to have a stall to help reduce their craft stash, please text Val on 07595 595151.

**PIMMS and HYMNS, Sunday 2<sup>nd</sup> August at 4pm.** This service will be held in the churchyard with an assembled band of musicians. Please volunteer if you would like to take part in this 'scratch' band. Contact Susan on 07969 424547 if you want take part.

Everyone is welcome to come and help us enjoy this 'out in the open air' service. We will move inside if the weather is poor.

**Conservation Group** meeting at St Andrew's will take place on **Saturdays 13<sup>th</sup> June and 11<sup>th</sup> July.** All are welcome so please come and support our conservation efforts in the

churchyard and a bit of 'outdoor gym' [or cleaning efforts indoors] from 10am - 12 noon. Freely available drinks and scones are on offer to entice you to join us!

**Bat counts** are at dusk on: **Wed 3<sup>rd</sup> June 21.34pm** and **Wed 1<sup>st</sup> July at 21.46pm.** Meet on the church path if you would like to see the bats and help us count our resident bat population.

**Removal of pews from the back of church** - Thanks go to the helpers who helped with this heavy work on the 1<sup>st</sup> May. This space has already allowed us to have the lambs in a pen inside for the Lambing Service on Sunday 3<sup>rd</sup> May due to the wet weather (see page 6) and to sit and enjoy refreshments after church services.



Please see the parish website or church noticeboard for further details of services and events.  
[www.swaledalearkengarthdaleparish.org.uk](http://www.swaledalearkengarthdaleparish.org.uk)

**PIANO TUNER**  
**PAUL CRAY M.P.T.A**  
 Tel: 07798 525846



*Reawaken your passion for music*  
 paulcray.pianotuner@gmail.com



**Yorkshire Dales Accountancy**  
 Chartered Accountants

taxation & business advisors

Providing a broad range of accountancy and taxation services across a variety of sectors, including:

- Accounts • Business Tax • Personal Tax • VAT • Payroll
- Construction Industry Scheme • Capital Gains Tax
- Inheritance Tax • Making Tax Digital


Kiln Place, Dryden House, Market Place,  
 Hawes, North Yorkshire, DL8 3RA  
 E: info@yorkshiredalesaccountancy.co.uk  
 T: 01969 678128  
 www.yorkshiredalesaccountancy.co.uk

**CHAPEL GALLERY**

Work from local artists and crafters  
 Bespoke Workshops Available  
 Coffee and cakes  
 Dogs and children welcome

Open daily (except Sundays) 11am to 4pm

Burtersett Road, Hawes, DL8 3NP  
 Tel: 07474 138536  
[info@chapelgalleryhawes.com](mailto:info@chapelgalleryhawes.com)  
[www.chapelgalleryhawes.com](http://www.chapelgalleryhawes.com)



**Grinton Books**  
 Open Daily  
 10-4pm  
 (next to the pub car park)  
 All proceeds towards  
 the upkeep of the  
 building

**Half-Day Lino Workshop:**  
 26th June and 25th July 9am - 1pm  
**£35 per workshop**  
 LIMITED PLACES



[www.lowrowinstitute.co.uk](http://www.lowrowinstitute.co.uk)

 **ASHFORD COTTAGE DESIGN**  
 WWW.ASHFORDCOTTAGEDESIGN.CO.UK

## Muker Show & Advent Project

### Christians Together in Swaledale

What do you call a group of angels - a crowd, a flock, a host, a swarm, a flight? The 3.5 inches high angels will have a label attached with words along the lines of 'A gift of love from Christians Together in Swaledale'. They will then be distributed, at events, in public places, to anyone who would like to take/accept one.

We have a pattern and now just need knitters to knit as many as we can by 17<sup>th</sup> August for Muker Show and by 14<sup>th</sup> November for Advent. 500 sounds an exciting number! If you think you could help please contact one of us for a pattern. Using slightly different needles, wool and colours but the same pattern would make each one unique. [suepellatt@hotmail.com](mailto:suepellatt@hotmail.com) 01748 886963 or [paulineoldershaw@gmail.com](mailto:paulineoldershaw@gmail.com) 01969 629723

### Timetable

- Knitted and returned to one of us by 17 August for Muker Show (churches along the dale as collection points)
- We will then attach labels etc/finish off in time for the Show
- Returned to one of us by 14 November for Advent
- Sharing at Muker Show and during Advent

Sue Pellatt and Pauline Oldershaw  
(on behalf of Christians Together in Swaledale)



### S A B F

## Swaledale & Arkengarthdale Business Forum

Members, get assistance to enhance or update your entry

Non-Members, send your details for a basic entry

visit our website  
[www.swaledale.net](http://www.swaledale.net)

Packed with useful information for visitors and locals alike, including a comprehensive services directory



### ALL OCCASIONS CATERED FOR

HOT & COLD FOOD OPTIONS  
CAKES & TRAYBAKES

Contact Anne & Claire:  
07837 805413  
[clairewilliams10@hotmail.com](mailto:clairewilliams10@hotmail.com)



**RCleaning Services**  
DOMESTIC & COMMERCIAL CLEANING

Reliable & trustworthy  
Insured  
Regular cleans  
One-off cleans  
EOT cleaning  
Air bnb & changeover cleans  
Offices & work spaces

**DBS CHECKED**  
Enhanced CRB  
Criminal and banning service

Covering Reeth and surrounding areas!  
Weekly / Fortnightly / Monthly Slots Available

**RCLEANING\_SERVICES**  
07531561487  
[RCAHHS@HOTMAIL.COM](mailto:RCAHHS@HOTMAIL.COM)

## M. GUY - PLUMBING

For all your plumbing requirements

AGAS & RAYBURNS SERVICED

[kathrynguy@designermakersmarket.co.uk](mailto:kathrynguy@designermakersmarket.co.uk)

Tel: 01748 - 825640

  
**Richmond Footcare**  
**KEEPS YOU ON TRACK!**  
Enjoy Dedicated and Professional Foot Care that is One Step Ahead of the Rest.



[www.richmondfootcare.co.uk](http://www.richmondfootcare.co.uk)  
1 Rosemary Lane · Richmond · DL10 4DP  
075 111 119 84 or scan QR Code

  
hpc registered  
[www.hpcuk.org](http://www.hpcuk.org)



**R. & W. GIBSON & SON Ltd.**

**CERAMIC WALL  
& FLOOR TILERS**

**SHOWROOM NOW OPEN**

**Monday - Friday: 9.00am - 4.30pm**

**Saturday: 10.00am - 1.00pm**

**(or by appointment)**

**At Borough Road,  
Gallowfields Trading Estate**

**DL10 4SX**

**Tel. 01748 - 822682 (Home)**

**Tel. 01748 - 821909 (Showroom)**

**“We cover the Dales”**

## **S.J.R Plumbing Services**

For all of your domestic  
Plumbing requirements.

C & G/Advanced C & G Qualified

Reliable With Very Competitive Rates

Based in Reeth

**01748-884036**

**Or 07977-297563**

**SWALEDALE**

**'POTTING ON THE NEXT GENERATION IN THE TWO DALES'**



**PLAYGROUP**

WWW.SWALEDALE-SEEDLINGSGRUP

REGISTERED CHARITY NO- 1049310

Find us on Facebook – Search Seedlings Reeth

## **Swaledale Seedlings playgroup**

### **‘Stay and Play’ Session**

Thursdays (Term-Time) at Reeth Memorial Hall  
9.30am until 11:25am

Open to all children under the age of 5

£3 per child per session

Pop into a session or message us on Facebook  
for further information

**The Arts Society  
Wensleydale presents  
“Antoni Gaudí (1852-  
1926), Master Builder of  
Barcelona”**

Genius Spanish architect and designer Antoni Gaudí (1852-1926), a key figure in Catalan Modernism, stands as one of the creators of Barcelona's urban identity.

Inventor of new techniques and a magpie enthusiast of all things botanical and sacred, Gaudí's most famous building, the Barcelona Church of the Sagrada Família, is Spain's most -visited monument and one of seven of the architect's works listed by UNESCO as a World Heritage site.

Building works on Sagrada Família were begun in 1882 and



are still ongoing, a fact that stands in stark contrast to contemporary building projects and brings to life the nature of cathedral building in medieval Europe.

This lecture, by Vivienne Lawes, examines Gaudí's work and legacy and will take place at Tennants Garden Rooms, Leyburn, DL8 5SG on Tuesday 23rd June at 2pm.

There is plenty of free parking, a café and a restaurant, All welcome, members free, guests £10.

**Alyson Jones**



*Owners Julie and Liz have their hearts in the Dales*

**“Delightful Cottage, perfect base for exploring the Dales”**

**-2025 Guest-  
One bedroom  
Langthwaite  
Richmond DL11 6RE**

**Contact us for more details:  
Email: [ivycottagepartnership@gmail.com](mailto:ivycottagepartnership@gmail.com)**

**RC Jenkinson Ltd**  
Bespoke Building & Renovation Specialists

☎ 07968 463840  
✉ [info@rcjenkinson.co.uk](mailto:info@rcjenkinson.co.uk)  
🌐 [www.rcjenkinson.co.uk](http://www.rcjenkinson.co.uk)

**VICTORIA DESIGN GROUP LTD**  
Consulting Civil & Structural Engineers

**Consulting Structural & Civil Engineers**  
*Structural Surveys  
All design work undertaken  
whether domestic or commercial,  
large or small*

**Telephone: 01748 886717  
Email: [office@vdg.co.uk](mailto:office@vdg.co.uk)  
Website : [vdg.co.uk](http://vdg.co.uk)**

## Dales Reyno-Vations



### General Building & Maintenance

Property renovations / Roofing  
Kitchen fitting / Joinery  
Bathroom suites / Tiling  
Painting & Decorating  
Patios / Landscaping / Ground  
maintenance  
Free estimates / Insurance quotes  
**No Job too small**

**D Reynoldson**

11, Place Hill, Reeth, Richmond  
North Yorkshire, DL11 6SD  
**01748884309 / 07792458801**

**Email: [david.reeth1@outlook.com](mailto:david.reeth1@outlook.com)**

## NORTHERN WALLS

**DRYSTONE WALLING  
& LANDSCAPING**

Former National Trust  
gardener with 20 years  
experience  
City and Guild Certificate in  
Horticulture

**[www.northernwalls.com](http://www.northernwalls.com)**

**Tel 0795 148 1239**

## Geoff Braithwaite

**Property Maintenance &  
Painting and Decorating**

**Tel: 01748 886 783**

**Mob: 07535 431502**

**Email:**

**[geoff@mukerchapel.co.uk](mailto:geoff@mukerchapel.co.uk)**



### Reeth Car Boot Sale

There will be a Reeth, Fremington and  
Healaugh Parish Council Car Boot Sale on  
Saturday 28th June 2026, 9am—2pm

Set-up from 8.30am on the Quoits and  
Bonfire Green

There is a £5 charge per table or car



## KARL LONGDEN PLUMBING

Reeth, North Yorkshire

**[karllongdenplumbing@yahoo.com](mailto:karllongdenplumbing@yahoo.com)**

**Tel. 01748 889951**

**Mob. 07969 329893**

**24 HOUR CALL OUT SERVICE**



# REETH AND DISTRICT GAZETTE LTD



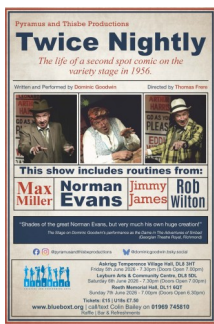
## June Update

### Wensleydale Community Arts Festival

It's here! The fourth Community Arts Festival runs from 5<sup>th</sup> to 20<sup>th</sup> June 2026 and features performances by participants from across Wensleydale and Swaledale. Full information and tickets are available at [www.wensleydale.org](http://www.wensleydale.org) or pick up an information leaflet from community information points to find out more. All events are 'Pay What You Can Afford' unless stated otherwise. Refreshments available. The programme features:

### Live Theatre: Twice Nightly - A celebration of the glory days of Variety.

Dominic Goodwin is back for 'another titter' as Freddie Francis in his hilarious one man show, *Twice Nightly*. Freddie recalls his life as a second spot comic touring the country for 30yrs on every variety bill going. The show also includes routines from Max Miller, Rob Wilton, Jimmy James and Norman Evans and renditions of many of the popular songs of the time. Performances take place: Friday 5<sup>th</sup> June (Askrigg V. Hall, 7.30pm), Saturday 6<sup>th</sup> (Leyburn Arts Centre, 7.30pm) and Sunday 7<sup>th</sup> (Reeth M. Hall, 7.00pm). Tickets £15, U18s



£7.50 - Bar and refreshments available.

**Art Workshops** with Lynn Ward (Saturday 6<sup>th</sup>) and Maxine Ahmed (Saturday 20<sup>th</sup>) 10am-2pm at Leyburn Methodist Church Hall. Places cost £25 including materials and refreshments.

**Evening Concert** with Bee Darceey, The Pearls and A Rockin' Little Duo (Rod Baxter and Thomas Linckh) - Friday 12<sup>th</sup>, 7.00pm at St. Matthew's Church, Leyburn.

**Afternoon Choral Concert** with The Wesley Singers - Saturday 13<sup>th</sup>, 3.00pm at Leyburn Methodist Church. Donations in aid of the upkeep of the building.

**Dales Variety Show** with Dales Dance and BlueBoxt Young Performers - Saturday 13<sup>th</sup>, 7.00pm at St. Matthew's Church, Leyburn.

**Tea and Cake** with Leyburn Band - Sunday 14<sup>th</sup>, 2.00pm at St. Matthew's Church, Leyburn.

**Colours Fashion Show - Wednesday 17<sup>th</sup> June, 7.00pm, at West Burton Village Hall.** Back by popular demand so book your tickets early! We have teamed up with Colours, a nationwide retail organisation that specialises in supporting charities to raise funds. "Our ladies fashion show and shopping events are uniquely designed to offer a fun and entertaining experience. We bring premium high street brands to you at great prices!" There will be a Bar and Refreshments, Raffle, local makers stalls and entertainment with vocalist Bee Darceey. Ticket: £8.00 inc. welcome drink.

**Evening Concert** with local bands, *The 684s* (Jazz Standards and Great American Songbook) and *Somewhere Road* (Stories, Songs and Tunes) -

## REETH AND DISTRICT GAZETTE LTD

Friday 19<sup>th</sup>, 7.00pm at St. Matthew's Church, Leyburn.

**An Afternoon of Music and Spoken Word** with Lili Bako (1.30pm), The Stanley Duo (2.00pm), Donovan Leaman - , Light My Choir!, Colin Bailey, Gail Barlow, and The Rodneys - Saturday 20<sup>th</sup> June, from 1.30pm at St. Matthew's Church, Leyburn.

**Evening Concert** with Jason Isaacs, winner of *Britain's Favourite Crooner* - Saturday 20<sup>th</sup> June, 7.30pm at Leyburn Arts and Community Centre, Tickets £15

**Summer Photographic Exhibition** with Wensleydale Camera Club at The COOP, Leyburn runs Monday 8<sup>th</sup> to Saturday 20<sup>th</sup> June.

### **Cultural Passport for Young People in North Yorkshire.**

A brand-new initiative is launching aimed at 11-18 year olds who would like to access arts-based opportunities. Details of the wider scheme are still being confirmed but we can share BlueBoxt's offer:

FREE access to take part in our regular music activities - *Get Musical Jam Band* (Wednesdays 4.00pm-5.30pm).

Chance to perform in the Dales Variety Show on Saturday 13<sup>th</sup> June - **GET IN TOUCH!**

FREE Tickets to local events.

Support to develop your creative and enterprise ideas such as organising and running your own events. Includes Mentoring support, Micro-Grants and access to our Community Equipment Bank.

Access to gain Arts Award, Volunteering and/or Leadership qualifications.

We are delighted to be a delivery partner for the 'Cultural Passport'

thanks the support of North Yorkshire Council, York City Council and the York and North Yorkshire Combined Authority.

### **Leyburn Jazz Festival**

The sixth Festival takes place in October. The full programme is now on sale - visit [www.leyburnjazz.org](http://www.leyburnjazz.org) or pick up a programme from community information points.

### **Fund Raising**

**Grand Prize Draw** - Tickets for our Grand Prize Draw are now available. Tickets £1 each - proceeds support our core activities. Prizes include SMART TV, Bluetooth Headphone, Air Fryer and vouchers for various local retailers and eateries. The full list of prizes is available on our website or by request. Draw date: Wednesday 28<sup>th</sup> October, 2026.

**Coffee Mornings at Leyburn Methodist Church Hall** - Fridays 24<sup>th</sup> July, 21<sup>st</sup> August, 30<sup>th</sup> October and 27<sup>th</sup> November, from 9.30am. Pop along and enjoy a cuppa and a chat. There will also be a Cake Stall and Raffle.

**Quiz night with Simon Eastwood** - Friday 9<sup>th</sup> October at West Burton Village Hall, DL8 4JY. 7.00pm for a prompt 7.30pm start. Teams of 6 or come along and make a team on the night. Tickets £15 inc. two course supper. Our annual quiz is always a fun event - book early to avoid disappointment!

**To find out more or book places for our events and activities visit [www.blueboxt.org](http://www.blueboxt.org) or contact Colin Bailey on: 01969 745810/ 07711 211169 or email: [info@blueboxt.org](mailto:info@blueboxt.org)**

**'The perfect Summer Vibes...'**

For their third appearance this year at The Station, John and Jane Hunter's 'Good Vibes' Jazz combo return for another night of swinging jazz, film and show tunes and a touch of light classics.

All recent evenings have been total sell-outs so those interested are encouraged to purchase tickets as soon as possible. As usual the evening features a two-course meal in addition to the musical entertainment. Jazz @ The Station, Richmond - Saturday, 8<sup>th</sup> August 2026 - For further information and tickets contact The Station, Richmond. Call 01748 825967 or email [reservations@thestation.co.uk](mailto:reservations@thestation.co.uk).

**JAZZ NIGHT**

**THE STATION**  
CAFE | BAR  
RICHMOND

**Saturday 8th  
AUGUST 2026  
@ 7.30pm**

Looking for the perfect summer vibe? Join us for an evening of smooth, soulful, and refreshing jazz with the

**The Good Vibes Trio**  
whilst you enjoy a delicious two-course evening meal.

John Hunter—Piano / MD  
Jane Hunter—Vibes  
John Padfield—Sax/Clarinet

**£30.00 per person** (drinks not included)  
Call 01748 825967 or email [reservations@thestation.co.uk](mailto:reservations@thestation.co.uk) to book

**2Dales Digital**  
Family Business to Support you at home



Local Support for your Desktop & Laptop

**Common issues we can help you with and many more:**

- |   |  |
|---|--|
| <ul style="list-style-type: none"> <li><input type="checkbox"/> Error Messages</li> <li><input type="checkbox"/> Virus &amp; Malware warnings</li> <li><input type="checkbox"/> You cannot access your files</li> <li><input type="checkbox"/> Lost documents or Photos</li> <li><input type="checkbox"/> Windows warnings and errors</li> <li><input type="checkbox"/> Power issues</li> <li><input type="checkbox"/> Software not installing</li> <li><input type="checkbox"/> Locked out of account</li> <li><input type="checkbox"/> Windows update failed</li> </ul> | <ul style="list-style-type: none"> <li><input type="checkbox"/> Deleted files by mistake</li> <li><input type="checkbox"/> Disk full</li> <li><input type="checkbox"/> File read/write errors</li> <li><input type="checkbox"/> Computer will not start up</li> <li><input type="checkbox"/> Blank screen</li> <li><input type="checkbox"/> E-Mail issues</li> <li><input type="checkbox"/> OneDrive backup issues</li> <li><input type="checkbox"/> Laptop screen cracked</li> <li><input type="checkbox"/> Laptop screen hinge issues</li> </ul> |
|---|--|

**For Support: Email : [mikebarden@yahoo.com](mailto:mikebarden@yahoo.com)  
Phone : 01748 884737**

**Gunnerside Chapel**

Following on from the Easter-day service in the Chapel, (led by John Little, a former Prison visitor and chaplain), who talked about how Jesus managed to, (and still can), provoke a surprisingly positive response in some of the most unlikely people, the Chapel held its annual "Soup and Sweet" fund raising event in the Village Hall. In total, this raised the sum of £803.21. Grateful thanks go to all those who organised, cooked, provided prizes, served on the day, and cleaned up. (Thanks also to all those who turned up, paid up, and ate)!

Richard Hunt



**The Dog Shed**  
**Grooming & Teeth Care**

Dog grooming and teeth care in Leyburn

---

Level 2&3 City & Guilds qualified  
Emmi-pet teeth cleaning  
Fully insured  
One-to-one, quiet setting

---

Call Sarah on 07739 716344  
or find us on Facebook!




**Music Tuition for all ages with**  
**www.colinbaileymusic.co.uk**  
**07711 211169**

Drums & Percussion; Vocals;  
Piano & Keyboards; Music Theory;  
'Get Musical' Workshops.

**James Peacock**



**Solid Fuel Merchant**  
**Bainbridge**

Good quality fuels at competitive prices.  
Deliveries to Wensleydale, Swaledale and Coverdale.  
No delivery too small.

Tel. 01969 650212/650465

info@james-peacock.co.uk  
www.james-peacock.co.uk

**A. HOWARD JOINERY**  
no job too small  
**01748 884045**  
andrewhowardjoinery@gmail.com



**Dreaming of your own holiday lodge or caravan in the Yorkshire Dales?**

Swaleview Park is a family-owned retreat in Swaledale, established in the 1930's!

Open all-year round, less than 3 miles from Richmond - countryside & river views.

info@swaleviewpark.co.uk  
01748 823106 | 07736 820283  
www.swaleviewpark.co.uk  
Facebook & Instagram: SwaleviewPark

## REETH AND DISTRICT GAZETTE LTD



**SWALEDALE  
MOUNTAIN  
RESCUE  
TEAM**



**In an emergency DIAL 999 ask for the POLICE then**

**Mountain Rescue / Cave Rescue / Mine Rescue / Flood Rescue**

Charity Commission Registration No: 1201870, providing Mountain and Cave Rescue in the Northern Yorkshire Dales

The team is made up of highly trained volunteers available 24/7 in any weather, any time of the day or night.

### **MOUNTAIN & CAVE RESCUE**

**On average we respond to between 40 and 50 calls each year.**

**In 2025 we attended 52 incidents (including out of area Dog Searches). Incidents 5<sup>th</sup> April to 10<sup>th</sup> May 2026 02 Incidents this edition**

**07/04/2026: Incident 18:** Called by the Police following an abandoned 999 call requesting help in a remote

location for a medical emergency. Unbelievably a team member was already at the reported location, and other team members quickly arrived. A quick search of the immediate area was carried out. However, information became available that a local farmer had come across the casualty and transported them to Hawes medical centre for immediate help.

**06/04/2026: Incident 17 (picture below):** Called by the Police to rescue an injured walker near the top end of Coverdale. Treated on scene by the team evacuated a short distance by stretcher then by the local farmer's 6 x 6 to the Ambulance.

**Thanks to Keld Lodge Hotel & Restaurant, there customers have raised a massive £2584.21**

We have a limited number of season 2026 neck tubes in stock. Kindly sponsored by Swalewoods Ltd. Available now at the Kings Head Gunnerside, The Farmers Arms, Muker and Brompton Caravan Park £10 each.



# REETH AND DISTRICT GAZETTE LTD



## OVERDALE STUDIO & GALLERY

The work of  
international  
award-winning  
Artist Martin Lever



MARRICK  
nr REETH  
DL11 7LQ

Viewings by  
appointment only

07513072773  
martin@artbymartinlever.com

artbymartinlever.com



## SWALEWOODS LTD.

FORESTRY & ARBORICULTURE  
AGENTS, CONSULTANTS & CONTRACTORS



Whether you have a fruit tree in need of pruning, a large commercial timber plantation to manage, a hedge to cut, or ancient woodland to restore, we offer a competitive service to help you get the most out of your trees!

Contact Chris Curry at Swalewoods for all tree surgery and forestry services:

M: 07528 684617

E: [chris.curry@swalewoods.co.uk](mailto:chris.curry@swalewoods.co.uk)

W: [www.swalewoods.co.uk](http://www.swalewoods.co.uk)

O: West View, Healaugh, Richmond, North Yorkshire. DL11 6UD



| Forestry Management | Stewardship Schemes | Woodland Establishment | Tree Inspection | Tree Surgery |



## Leyburn Arts & Community Centre

June already and half the year gone, soon we shall have the longest day and a reminder that we must enjoy the sunshine whilst we can! Our volunteers are enjoying holidays and, we hope, coming back refreshed for all the regular and special events. Amongst these we have a variety of options to get you back indoors - two National Theatre Live screenings, Playboy of the Western World & Les Liaisons Dangereuses; Live Theatre with Twice Nightly - the Glory days of Variety; with popular songs of the era such as The Man who broke the Bank at Monte Carlo & Happy Days are Here Again; Live Music with Jason Isaacs; plus all the regular Friday films.

We are pleased to welcome Middleham Quilters who are now having their regular sessions every Monday in the Centre and also Middleham & the Dales Local History group who will have their monthly talks in the Auditorium. The Keep Moving sessions for older adults have resumed and Adult Tap are welcoming new people too. Digital Support and Community & Specialist help continue to be available. So, lots going on! Makes me feel tired thinking about it all!

The gardens are looking at their best thanks to the volunteers and even after the successful Plant Fayre some spare plants are still available. The Community Shed members were pleased to show off their efforts at the Fayre too and now have some more funds for more projects. The Little Shop is fully stocked with a new selection of books and jigsaws, home-made jams & marmalade. As always see the flyer or website for more information or just pop in to see us.

Jeannie Bishop



**MEMBER**  **SWEEPIN' THE DALES CHIMNEY SWEEP** 

**YOUR LOCAL TRADITIONAL CHIMNEY SWEEP**  
NACS & HETAS qualified & registered

**We set ourselves very high standards and take every care in your home**

**We offer a comprehensive service**  
All types of chimneys swept to relevant BS Std.  
Bird guards & cowl, etc. supplied & fitted  
Advice freely given, problems solved  
Carbon monoxide detectors  
Chimney pots replaced

**01765 688078**  
**www.sweepinthedales.co.uk**

Stove Refurbishment  
Stove servicing and repair  
Solid fuel stove installations  
Stainless steel flexible linings  
Stainless steel rigid flue systems  
Only high quality components are used

**HETAS qualified & registered installer**

**STOVE INSTALLATION**

**HEATING**  **THE DALES SOLID FUEL INSTALLATION SERVICE** 

*Martyn Leaver*

*Dry Stone Waller*

- Farm or domestic work
- Drystone or facemalling
- Fence repairs and paving
- Misc jobs etc

**Thwaite 01748 886025**  
**Mob: 07971 456 043**

**Felt crafting with Cath Monks**

**Thursday 25 June 7.30  
Gunnerside Village Hall**

TLC@Gunnerside is delighted that Cath Monks is coming back to share her felting expertise again and guide us through the delights ...and sometimes frustrations.... of making a felted artefact. Her previous sessions have shown us how to create a sheep's face on a ball, and a framed felted robin. As with all crafting sessions, we chat and laugh as we work, and admire each others' masterpieces at the end of the evening, before we take them home to amaze our family with the artistry and skill that Cath has brought out in even the least talented of us.

There might be space for a few visitors, who will be very welcome for a small charge to cover the cost of materials.

You can become a member of TLC for just £10 for the year and enjoy a variety of events and activities. Keep an eye on Facebook and the Gazette for monthly updates.

**Sue Barron 07579 795886 (I'm on WhatsApp)**



**SWALEDALE MUSEUM & SHOP**  
est. 1974

**OPEN**  
June to September  
by CHANCE

Children 12 & under FREE  
Adults £5.50

REETH DL11 6TX  
[www.swaledalemuseum.org](http://www.swaledalemuseum.org)

MINERALS & FOSSILS PREHISTORIC LANDSCAPE LEAD MINING SHEEP & FARMING  
STONE WALLS & BARNS TRADES & CRAFTS PEOPLE OF THE DALE DIALECT GIFTS & BOOKS

**YORKSHIRE FOOT CLINICS**

Podiatry/Chiropody  
Alex Kravchenko MChS, BSc Pod (Hons)  
Nail cutting, callus, corns & ingrowing nails  
All treated in the comfort of your home

**Tel. Richmond 850020  
Or Hawes 667449**

*Always insist on state registered*

**Orchard Caravan Park**

Idyllic setting in the market town of Reeth, nestled next to the river Swale in the heart of beautiful Swaledale.

Orchard Caravan and Camping Park is the ideal location for a tranquil and relaxing break, or for those who seek an active holiday to enjoy walking and biking.

- Static Caravan Hire
- Camping pod hire
- Touring, motorhome & Camping welcome

Email: [Office@Orchardcaravanpark.com](mailto:Office@Orchardcaravanpark.com)

Facebook: @Orchardcaravanparkreeth



# REETH AND DISTRICT GAZETTE LTD

## Church Opening Times and Services in June

<b>7<sup>th</sup> June</b>	9.15 am	St. Mary's Muker	<i>Eucharist</i>
	10.30 am	St Joseph & Francis Xavier Richmond	<i>Mass</i>
	10.30 am	Low Row URC	<i>Holy Communion</i>
	11.00 am	St. Edmund's, Marske	<i>Holy Communion</i>
	11.00 am	Reeth Evangelical Congregational	
	11.00 am	Holy Trinity Low Row	<i>Eucharist</i>
	4.00 pm	Reeth Evangelical Congregational	<i>Refreshments from 3.45 pm</i>
<b>14<sup>th</sup> June</b>	9.30 am	St. Andrew's Grinton	<i>Baptism Service</i>
	9.30 am	St Michael's Downholme	<i>Morning Prayer</i>
	10.30 am	St Joseph & Francis Xavier Richmond	<i>Mass</i>
	10.30 am	Low Row URC	
	11.00 am	Reeth Evangelical Congregational	
	11.00 am	St. Edmund's, Marske	<i>Morning Prayer</i>
	11.15 am	St. Mary's Arkengarthdale	<i>Holy Communion BCP</i>
	4.00 pm	Reeth Evangelical Congregational	<i>Refreshments from 3.45 pm</i>
	4.00 pm	St Michael's Downholme	<i>Songs of Praise</i>
	6.30 pm	Gunnarside Methodist	

**United Reformed Church**  
 Rev. Nadene Snyman  
 Tees and Swale Pastorate  
 07876 707863  
 teesandswaleurc@gmail.com

**Methodist**  
 Rev Jo Brown  
 01969 623818  
 jo.brown@methodist.org.uk

**Reeth Evangelical Congregational  
 Church**  
 The Revd David Levell  
 07582 575 815 www.reethecc.co.uk

**Roman Catholic**  
 Fr John Bane  
 01748 822 175  
 www.stjosephsfx.co.uk

# REETH AND DISTRICT GAZETTE LTD

## Church Opening Times and Services in June

<b>20<sup>th</sup> June</b>	6.00 pm	Reeth Evangelical Congregational	<i>Church Festival Service</i>
<b>21<sup>st</sup> June</b>	9.15 am	St. Mary's Muker	<i>Holy Communion BCP</i>
	10.30 am	St Joseph & Francis Xavier Richmond	<i>Mass</i>
	11.00 am	Reeth Evangelical Congregational	
	11.00 am	St. Edmund's, Marske	<i>Holy Communion</i>
	11.00 am	Holy Trinity Low Row	<i>Eucharist</i>
	4.00 pm	Reeth Evangelical Congregational	<i>Refreshments from 3.45 pm</i>
<b>28<sup>th</sup> June</b>	9.30 pm	St Michael's Downholme	<i>Holy Communion</i>
	9.30 am	St. Andrew's Grinton	<i>Eucharist</i>
	10.30 am	St Joseph & Francis Xavier Richmond	<i>Mass</i>
	10.30 am	Low Row URC	
	11.00 am	Reeth Evangelical Congregational	
	11.00 am	St. Edmund's, Marske	<i>Holy Communion</i>
	11.15 am	St. Mary's Arkengarthdale	<i>Holy Communion BCP</i>
	4.00 pm	Reeth Evangelical Congregational	<i>Refreshments from 3.45 pm</i>
	6.30 pm	Gunnarside Methodist	

### Church of England

Reverend Canon Caroline Hewlett  
Vicar of the Parish of Swaledale with Arkengarthdale  
01748 884706    carolinejhewlett19@gmail.com

### *Religious Society of Friends (Quakers)*

Quaker House, 7 Grove Square, Leyburn every Sunday at 10.30 am  
The Scout Hut, Quakers Lane, Richmond 2<sup>nd</sup> and 4<sup>th</sup> Sundays at 10.30am  
[www.dalesquakers.org.uk](http://www.dalesquakers.org.uk)



**SALES - LETTINGS - MANAGEMENT**  
**FREE 'NO OBLIGATION' MARKET APPRAISAL AVAILABLE**  
**UPON REQUEST**

6 Bridge Street  
Bedale  
DL8 2AD  
01677 422282

bedale@  
normanfbrown.co.uk

14 Queens Road  
Richmond  
DL10 4AG  
01748  
822473/822967

richmond@  
normanfbrown.co.uk

25 Market Place  
Leyburn  
DL8 5AS  
01969 622194

leyburn@  
normanfbrown.co.uk

**www.normanfbrown.co.uk**

**PROPERTY MAINTENANCE**

General Building Work, Dry Lining,  
Decorating, Electrical Work, Kitchen  
Fitting, Joinery, Paving, Garden  
Maintenance, Roofing, pointing &  
guttering work. Small jobs welcome.  
Free estimates.

Contact Martin or Django  
Tel 01748 886 465 Mob: 07813 715 120  
Email: martinkiss1960@gmail.com

**STURDY TRAVEL**

INDEPENDENT TRAVEL SPECIALISTS

Now at 1 Golden Lion Yard  
Market Place, Leyburn DL8 5AS  
For all your travel needs, home and abroad

Call: 01677 422826  
Email: robert@bakewelltravel.co.uk



Part of Bakewell Travel



**Lady Interior Decorator**

Painting & Decorating, Competitive rates  
Established 30 Years: Based in Richmond  
Free estimates, Friendly advice, Est 29 years

Call Yvonne on: 07838378836  
Email: yvonesdecor@hotmail.co.uk

## Middleham and the Dales Local History Group

Isobel Jenkins Lecture

Wednesday 17 June, 2.00pm at

Leyburn Arts and Community Centre

Bastles, chapels and castle communities:  
new work on English Heritage's medieval  
properties, by Dr William Wyeth,  
Curator of History, English Heritage.

In this lecture Will Wyeth will outline some of the recent work that has been undertaken by English Heritage on the history and archaeology of the medieval castles in the charity's care. He will share new discoveries, outline some interesting avenues of research, and talk about some upcoming work.

Will has been a Curator of History at English Heritage for over eight years and is a specialist in medieval castles. He has researched several castles in the area in advance of new information boards and museum refits in Yorkshire, including Middleham and Richmond castles. His research interests centre on the communities of castles and the archaeology of castle buildings.

Members, new members and visitors are always welcome, annual membership is £12 for 9 meetings and visitors can attend for £3 per meeting. For more information contact Tony Keates 01969 640436, [dotandtomyk@btinternet.com](mailto:dotandtomyk@btinternet.com)

Langthwaite - Arkengarthdale

**RED LION INN**

Free House  
Real Ales – Bar Snacks  
Books & Maps  
Tel. 01748 884218

## 3D Cross-Stitch



### The Nutmeg Gallery

Reeth DL11 6SP

(Reeth Dales Centre, off Place Hill)

Open April to October

Tue, Wed, most Thurs and some Saturdays.

During the winter and for other times ring  
01748884926 or visit

[www.3dcrossstitch.co.uk](http://www.3dcrossstitch.co.uk)



### Secretary wanted for the Festival

Swaledale Festival are looking for a Secretary to join our small and enthusiastic Board of Trustees. The main duties include liaising with Companies House and the Charity Commission, keeping abreast of relevant legislation, preparing the Board agenda for the monthly Board meetings, and taking the Minutes.

The Board is made up of volunteers who support this much-appreciated Festival, which brings a wide range of music, the arts, and walking, to this area of the Yorkshire Dales for two weeks each year, beginning on the late Spring Bank holiday (23 May – 6 June 2026).

For an informal conversation in the first instance, please get in touch with our Chairman, Dr. Susan Miller – email [chairman@swalefest.org](mailto:chairman@swalefest.org), or phone on 01748 886358.

# REETH AND DISTRICT GAZETTE LTD

## Keld Heritage Centre

### Events for June and July

#### 20<sup>th</sup> June - Soap Workshop 10.30 - 15.30 Keld Heritage Centre

Join Fiona Hughes and learn how to make your own cold process soap from scratch using fats and oils and create your own soaps to take home. Please bring box/tray/old towel to take soap home.

Bring packed lunch or sandwiches/salads available to order pay on the day. Charge: £45 pp

#### 21<sup>st</sup> June - Glacial Walk 10.00 - 16.00 Meet: Keld Heritage Centre Approx 7 miles (moderate)

Join Prof. Mark Rutter on a walk around Kisdon exploring the well preserved glacial features from the last Ice Age approximately 15,000 years ago.

Please bring packed lunch. Dogs on leads welcome.

Charge: £8 pp

#### 4<sup>th</sup> July - Needle Felting Sheep Workshop 10.00 - 16.00 Keld Heritage Centre

Join Clare Gaukroger and learn how to needle felt your own charming 10cm sheep with breed-specific wool. No experience necessary. Please bring packed lunch or sandwiches/salads available to order and pay on the day. Refreshments provided.

Charge: £50 pp

#### 12<sup>th</sup> July - Wild Flower Talk & Walk 10.00 - 16.00 Keld Heritage Centre

Join Martin Hughes & Sue Knight, on a combined talk and walk which will cover the basics of wild flower identification, followed by a field walk to spot Swaledale wild flowers.

Please bring packed lunch or sandwiches/salads available to order pay on the day.

Walk approx. 3 miles. Easy going and on footpaths.

Charge: £15 pp

Full details and tickets available via [keldheritage.co.uk](http://keldheritage.co.uk) or our Facebook page.

Email [helenguy47@gmail.com](mailto:helenguy47@gmail.com)

Booking essential due to limited places for some events.

## R.Foster

### Tree and garden maintenance

All aspects of tree work undertaken.

Hedges & shrubs maintained.

Garden tidying. Stump grinding.

Tree & shrub planting.

Lawn care. Cutting, edging, scarifying and aeration.

Gutters cleaned.

Tel Robert on 07870 444360

## R.L.D. ROOFING & BUILDING LTD

Covers all aspects of roofing and building  
0737 607 3816 07597 621 287  
[RLDroofing@mail.com](mailto:RLDroofing@mail.com)

## R.L.G. GROUNDWORKS CONTRACTORS LTD

0737 607 3816  
[info@rlggroundworks.co.uk](mailto:info@rlggroundworks.co.uk)  
[RLGgroundworks.co.uk](http://RLGgroundworks.co.uk)

## A couple more best reads

I thought we'd probably exhausted the nominations for good books that folk had read in 2025, but there have been more recommendations so I'm happy to share them with you. Keep your suggestions coming and whenever I've got a few I'll put them in the Gazette.

**Nick Caldwell and Prue Drew** recommend **The Women who Saved the English Countryside** by **Matthew Kelly**. We haven't had many non-fiction suggestions, so this makes a good change. It's a fascinating history of English landscape preservation over the last 150 years, told through the lives of four remarkable women, Octavia Hill, Beatrix Potter, Pauline Dower and Sylvia Sayer. From the commons of London to the Lake District, Northumberland, and Dartmoor, these women protected the English landscape through a mixture of environmental activism, networking, and sheer determination.

**Michael Briggs** wants to share his good read, **Demon Copperhead** by **Barbara Kingsolver**. Winner of the the 2023 Pulitzer prize, it reimagines Charles Dickens's *David Copperfield* in modern-day America. It follows a boy born to a teenage mother in a trailer, as he survives foster care, addiction and poverty. The story explores the opioid crisis, rural Appalachian life and the resilience of a boy fighting for survival.

[elizabeth@bedfords.me.uk](mailto:elizabeth@bedfords.me.uk)

### THE OLD TEMPERANCE BOOKSHOP

Reeth, Richmond, DL11 6TE

Tel. 01748 884185

Christian books & cards,

Fairtrade crafts and food



Beside the village green in Reeth, we are 50 yards up from Reeth Evangelical Congregational Church

#### Opening times:

1.30pm - 4.00pm Mon, Thurs, Sat

10.30am - 4.00pm Fri

Closed on Mondays 1st, 15th and 29th June and Saturday 27th June

two dales bakery  
reeth

## ARTISAN BAKERY & CAFÉ

Delicious breads and pastries  
Food served all day including  
vegetarian/vegan options  
Well behaved dogs welcome  
Visit us at the Reeth Dales Centre,  
Silver Street, Reeth,  
North Yorkshire, DL11 6SP  
Please see our website  
for current opening times  
[www.twodalesbakery.co.uk](http://www.twodalesbakery.co.uk)  
01748 905001

# REETH AND DISTRICT GAZETTE LTD



## Reeth Arts Festival

Reeth Arts Festival is a Festival for the Artists, by the Artists. It's become a loved and well attended festival over the past 3 years, and now in its 4th year the organisers are so pleased to be able to confirm that it will go ahead again.

The festival is heavily reliant on funding because of its somewhat unique ethos: it is a free event for exhibitors and attendees and therefore accessible to everyone.

Grant funding has become more difficult as a result of the squeeze on resources so the organisers have been reaching out to local businesses for support and sponsorship. We are so grateful for the positive response we have had, and I want to take this opportunity to say a huge thank you.

The sponsors for the festival this year are **The Buck, Moments Cafe & Avant Gardeners.**

These businesses have provided sponsorship funds along with other aspects of support including structures for the festival, and providing their services on festival day.



In addition generous donations have been provided by the Dales Bike Centre, Reeth Post Office & Corner Shop, and the Two Dales Bakery along with additional kind donations from a great number of the

community who have spotted the Go Fund Me for the festival. Sincerely, thank you so much from me and the artists. The response to the shout out has been genuinely so meaningful and enabling.

### About the festival....

Reeth Arts Festival is a Swaledale & Arkengarthdale based 'unincorporated not for profit charitable association' that gives North Yorkshire based artists a creative space to showcase their work completely free of charge.

The local Artists don't pay for their pitch and are therefore able to retain 100% of the money they make on the day. This approach is the ethos of the festival - to fully support the artists in their endeavours to make and sustain a living from their art.

'Accessibility to art' is the key, inclusivity no matter someone's financial situation, enabling new upcoming artists to exhibit, including young artists who are testing the water for their work in order to gain confidence and exposure.

The festival serves as a platform to shine a spotlight on and celebrate truly local art within North Yorkshire.



The festival is a one day event held outdoors overlooking Fremington Edge, and creates the perfect space for self-expression and showcasing art.

Many artists create on the day so that the visitors can see them at work. This brings the art to life, and can be very

# REETH AND DISTRICT GAZETTE LTD

inspirational, especially for children.

A great deal of the art produced is inspired by the beautiful surroundings in which they live, which echoes the physical space that the Festival is held in.

Importantly, there is **no admission charge** to come into the Festival so that it's accessible to all visitors to enjoy perusing the stalls, listening to the music performed and immersing themselves in the entertainment and activities throughout the day.

## The Festival's History...

- 1st Yr ('23) 20 artists exhibited and sold their work, approx 200 visitors attended the festival.
- 2nd Yr ('24) 30 artists exhibited, circa 400 visitors.
- 3rd Yr ('25) 45 artists exhibited and sold their work, over 800 visitors attended the festival.

At last year's Festival the 45 Artists who exhibited raised over £8,000 for their work collectively which was fantastic for them. It's always a wonderful sight for the local artists and volunteers to see busy stalls, happy faces & lots of colour!

## When & What...

The festival will be on

**Saturday 5th SEPTEMBER**

this year - as usual the Saturday after Reeth Show in the field next to Reeth Show field.

As well as 50 artists with stalls - this year there will be music throughout the day on the trailer stage with a fantastic line-up planned! In addition there will be lots of activities to join in with for both

adults and children, and two horse boxes with a good provision of food and alcohol by Moments Café and The Buck respectively.

More specific details about what you can expect at the festival this year will be shown in the lead up on social media.

Free Parking is available over the bridge (as was last year) for anyone travelling from further afield, and toilet facilities are provided in the festival field.

## Lastly...

We are still looking for one last sponsor to fit the 4th spot. If your business can help and would like to be associated with the festival please send an email to [reethartsfestival@yahoo.com](mailto:reethartsfestival@yahoo.com)

And, if you're an artist and you could use a free spot at the festival this year send an email to the aforementioned email address asap.

Thankyou for all the support ♥️🙏 xxx



*URL to the RAF promo video from last years festival if you haven't seen it!!*

[youtube.com/@ReethArtsFestival](https://youtube.com/@ReethArtsFestival)

**Imogen Hartley**

## Wensleydale Concert Series 2026

Following on from our May concert and the Swaledale Festival we are pleased to announce our next concert will take place on Sat June 20th and features the wonderful young pianist Rose McLachlan who will be performing music by Schubert, Ravel, Debussy and Chopin.

If you have our printed brochure please note this is a change of concert - sadly we agree that it made little sense for Yasmin Rowe to fly to the UK from Australia via the Middle East with the ongoing conflict. We hope Yasmin can play for us again next year.

We are really pleased Rose (right) will be joining us again for a full recital. She played for us a number of



years ago and gave a brilliant performance of Beethoven and has only continued to grow and mature through her subsequent studies at the Royal Northern College of Music, graduating in 2023, and is currently at the Guildhall School of Music and Drama for an Artists Masters Degree.

Rose has given performances as a solo recitalist, concerto soloist and chamber musician in many prestigious venues and at internationally renowned festivals. She also inspired 22 composers to write 22 new nocturnes after Chopin, which she premiered and got published.

Details and tickets are available at our website [www.wensleydaleconcertseries.co.uk](http://www.wensleydaleconcertseries.co.uk). Tickets are £18 in advance (£20 at the door) and season tickets are still available until the June concert (even if you missed the May concert at £72 they represent a huge saving over 5 concerts).



Saturday 13 June  
2026, 7.30pm  
Ripon Cathedral

# J. S. Bach Magnificat Cantata 51 Handel Dixit Dominus

John Dunford - conductor • Orchestra D'Amici  
Jane Burnell, Milly Lennox - sopranos • Adam Piplica - countertenor  
James Micklethwaite - tenor • Phil Wilcox - bass

Tickets: £26 reserved; £24 unreserved (student concessions £10)

Book online at [riporchoralsociety.org.uk](http://riporchoralsociety.org.uk)

• on the door at each concert • by email: [tickets@riporchoralsociety.org.uk](mailto:tickets@riporchoralsociety.org.uk)

## T.A.R. Longstaff

**Mobile Hydraulic hose  
repairs in Reeth and  
surrounding areas,  
anywhere anytime.**

**Also mobile on site  
welding.**

**Tel Percy on  
07889725349.**

# REETH AND DISTRICT GAZETTE LTD

## SWAAG

We don't have a talk in June as we are carrying out an archaeological investigation, a 'dig', 8th- 12th June, of a potential Iron Age settlement in Grinton which might even have been used later as a Roman Signal Station! If you are interested in getting involved, please email me at [grintondig2026@swaag.org](mailto:grintondig2026@swaag.org); no prior experience is needed as we will provide any necessary training and support.

While our group's primary focus is on archaeology many of us are very interested in local history; in fact, our most popular walk is a circular local history walk from Reeth, through Fremington, Grinton and back over the Swing Bridge. We have put a self-guided version of this on our website at <https://new-swaag.org/reeth-local-history-walk/> There is also much more produced by our mostly local members. Many local people will remember the late Jocelyn Campbell (1927-2022), who undertook research into the history of health, sickness, and medicine in the two dales and produced a comprehensive 49-page study; see <https://new-swaag.org/health-and-sickness-in-two-dales/>

Returning to our programme, our next talk will be by local historian Reuben Frankau, 'The bus up the Dale'. Some of our older locals may remember Percival Brothers Ltd, a historic, family-run bus operator based in Swaledale that provided vital links to Richmond for over 50 years before closing in 1971. Developing from a horse-drawn service, it was a cherished local institution in upper Swaledale. The talk will be on

Tuesday 14th July, 7:30pm in Fremington Village Hall; non-members welcome with a suggested donation of £5. Check our website for details and in case of any change: <https://new-swaag.org/our-events-diary/>

Alan Mills  
SWAAG is a registered  
charity no. 1155775



# Home Run

Pet sitting, House sitting, Dog walking

I offer a friendly, personalised pet and house sitting service in and around Swaledale.

Nicola – 07866 336924  
[nicola@homerundogsitting.co.uk](mailto:nicola@homerundogsitting.co.uk)  
[www.homerundogsitting.co.uk](http://www.homerundogsitting.co.uk)



## M.W Waste Services

### Environmental & Drainage Specialists

Septic Tanks Emptied & Cleaned  
Blocked Drains Cleared Fast  
Grease Traps & Interceptors Emptied  
Soakaways Rebuilt & Repaired  
Gully Emptying & Street Cleaning  
Refuse Collection

Septic Tanks Installed  
High Pressure Drain Jetting  
Mobile Steam Cleaning  
Sewage Plant Maintenance  
Industrial & Domestic Work Carried Out

Low Hang Bank Depot: Tel: 01325 377860/377850  
Melsomby  
Richmond  
North Yorkshire  
DL10 5NQ  
24/7 Call Out  
[Http://www.mwwaste.co.uk](http://www.mwwaste.co.uk)

Clear Your Blocked Drains Fast With Our High Pressure Jetter  
Free Quotes & Estimates

# REETH AND DISTRICT GAZETTE LTD

## Muker Parish Council Minutes of Parish Meeting Held March 2026

Present: Cllr Peacock, Cllr Metcalfe,  
Cllr Porter, Cllr Reynoldson, Cllr Calvert  
- Chair presiding.

Clerk: Mr Michael Cleminson.

Apologies for Absence: Cllr Rukin

### Matters Arising:

a. Yorkshire Dales Car Rally Sunday 29<sup>th</sup> March - this should have a minimal impact upon the Parish. Cllr Peacock reported that it was hoped to have the event every 2 years, and that parking charges and viewing charges may be implemented in certain locations.

b. NYC School Proposals. - Cllr Peacock reported that more NY Councillors have acknowledged that the mileage and distances calculated are inaccurate and misleading. A review post implementation survey is underway and anyone can contribute, using the online link. The Councillors agreed that Muker Parish Council should submit comments. The Clerk to submit a response.

c. Usha Gap & Scarr House Bridges - the Councillors expressed their concerns in the considerable delay in repairing these bridges and consider it unacceptable. Usha Gap bridge has recently been further damaged by an articulated lorry, witnessed by 2 people. Cllr Metcalfe said he had taken photos of the damaged lorry and spoken to the driver, who denied responsibility, despite damage to his vehicle. The Clerk has reported this matter to the Police, no update is available. Cllr

Peacock had had a meeting with the Bridges Team and they intend to complete both bridges by the end of this year.

d. Buttertubs Cattle Grid - The Councillors expressed their dismay at the amount of time it has taken to repair the grid, given that it was reported in October 2024. It is now impacting on the local farmers directly as they cannot use the land beyond the grid, as the side gate is left open all the time by cyclists and other road users. The Clerk stated he had sent a letter to Rishi Sunak MP. Cllr Peacock said that the grid is due to be repaired between the 13<sup>th</sup> and 24<sup>th</sup> April. This will be a full closure, but the farmers will still be able to go about their business.

e. Gov.uk email addresses for the Parish Councillors and Clerk are now in place and active. The Clerk can provide the passwords to each Councillor.

f. Permission to install a Memorial Bench, Keld. The Clerk has been contacted to ask permission and the Councillors said that they have no objection to the bench, however, it is down to the landowner. The Councillors are unsure who owns the land at present. The Clerk to establish the owner of the land.

**Finance:** Orders were raised to pay Zurich Insurance, Clerk's Salary, HMRC, Muker Public Hall and Aubergine (website).

**Highways:** See c & d above. Cllr Calvert reported significant potholes and some land slippage along from Keld side to Hoggarths bridge. Clerk to report to Highways

**NYC:** Nothing to report.

**NALC:** Nothing to report

## REETH AND DISTRICT GAZETTE LTD

**YDNPA:** Foxwith Barn, Muker, Richmond (GR: 389821, 498014) - R/06/267 is still 'Under Consideration'. Smithy Holme Farm, Keld, Richmond, DL11 6LW - R/06/280 granted conditional.

EV Car Home Charger at Greenlands, Muker, Richmond, DL11 6DY - R/06/72R/LB granted conditional.

**YLCA** - Nothing to report.

**Other Correspondence/AOB:** It was agreed to temporarily loan the 1856 Muker Parish Valuation book to Amanda Owen.

The meeting closed at 8.20pm.



### Using the NHS App

Wednesday 8th July

9.30 - 11.30am

Hudson House, Reeth, DL11 6TB

This free 2 hour session will help you learn how to use the NHS App.

Open to everyone.

Please bring along your tablet or smartphone.

For more information or to book a place please contact Abby Armstrong on 01609 533906, email [abby.armstrong@northyorks.gov.uk](mailto:abby.armstrong@northyorks.gov.uk) or pop into Hudson House.

[northyorks.gov.uk/adultlearning](http://northyorks.gov.uk/adultlearning)  
Tel: 01609 536 066  
Email: [AdultLearningService@northyorks.gov.uk](mailto:AdultLearningService@northyorks.gov.uk)



0526 89266102

**Anyone for whist?**

**Mondays 1.30 pm**

**Quaker Close flats, Reeth**



## Hudson House Centre Reeth

Owned by the Community of  
the Two Dales

Community

- Gallery
- Learning
- Library
- Orchard
- Transport

National Park Centre

North Yorkshire CC

Police

Richmondshire DC

Swaledale Festival

Business Forum

Hot drinks vending machine

Internet & WiFi

Local notices & information

Meeting Rooms

Tourist Information & Shop

**Open all year**

7 days a week

See website for times

Silver Street Craft Unit's  
managed by Hudson House.

For all enquiries contact

Jill May.

**01748 884485**

[www.hudsonhouse.info](http://www.hudsonhouse.info)

## Sycamore Gap Sapling Planted

A sapling grown from the iconic Sycamore Gap tree in Northumberland has been planted at the Yorkshire Dales National Park Visitor Centre in Grassington. This planting is part of a UK-wide legacy project that will see saplings grow in all 15 National Parks.

The sapling was planted by actors Samuel West (Siegfried Farnon) and Anna Madeley (Mrs Hall), (below) stars of the hugely popular TV series, All Creatures Great and Small, which is filmed extensively in the Yorkshire Dales.



Following the felling of the much-loved Sycamore Gap tree in 2023, the National Trust carefully propagated cuttings, which have now been distributed to every UK National Park. The plantings form part of a coordinated initiative led by National Parks UK in partnership with the National Trust.

Each sapling is a direct cutting from the original Sycamore Gap tree, ensuring its story continues to grow in landscapes cared for by National Park teams, communities, farmers and landowners.

The new trees will act as living reminders of a much-loved national landmark.

Mark Corner, Member Champion for Natural Environment at the Yorkshire Dales National Park Authority said: "This new generation of trees reminds us that conservation is about our commitment to future generations. From one iconic tree to 15, its legacy will now grow in every National Park, and we are proud to play our part in this story of resilience and renewal here in the Yorkshire Dales.

"The location at Grassington National Park Visitor Centre ensures visitors can watch the sapling grow in the heart of the National Park - a place where thousands begin their exploration of the Dales every year".



**Low Row Open Gardens**  
**Sunday 5<sup>th</sup> July 10.30 – 4pm**  
Explore scenic Dales gardens then  
pause for tea and cake!  
Tickets and maps £5 per adult  
on the day from Low Row Institute  
Refreshments and plants for sale at the Institute  
Sorry no dogs

# REETH AND DISTRICT GAZETTE LTD

## Reeth Tennis Club

### New Members Welcome

Our local Dales community is so fortunate to have a tennis court in the heart of Reeth and available to all. Reeth Tennis Club was set up a few years ago to give local people an opportunity to play tennis, and at the same time make good use of the excellent court facilities at the Reeth MUGA which had previously been under-utilised.

Membership is very good value - it runs from 1 May for a year, with single membership at £35 and family membership £55. Membership gives you access to a simple court booking system and if it's available then you can play as many times as you like! Members can join a WhatsApp group and if you don't have anyone to play with, you can meet other players through the Club.

It's in a beautiful setting surrounded by fields of sheep and birdsong. Tennis is a great activity for adults and children - to join, or find out more about Reeth Tennis Club, contact [reethtennisclub@gmail.com](mailto:reethtennisclub@gmail.com) or WhatsApp Nikki on 07534 776 034.



Over **25 years** experience working in the dales, time served and fully qualified.

All aspects of building work carried out by a **friendly** and **reliable** team.

Contact Andrew:

Phone: 07837955869

Email: [andrew@calvertandco.uk](mailto:andrew@calvertandco.uk)

Website: [www.calvertandco.uk](http://www.calvertandco.uk)

## FLOOR TILES CLEANED & SEALED

Kitchens Conservatories Hallways Bathrooms Fireplaces

### CLEAN & SEAL

Tel: 01748 811452 / Mobile: 07961 460020

Your Floor Tiles Cleaned & Sealed No Fuss No Hassle No Mess All Tiles

*Sandstone Terracotta Travertine Slate Flags*

*Limestone Encaustic Ceramic Marble Vinyl*

John Lord

[johngrahamlord@gmail.com](mailto:johngrahamlord@gmail.com)

# REETH AND DISTRICT GAZETTE LTD

## Dales Police



Your Local Neighbourhood Team are:

PCSO3521 Diane Smith,  
PCSO5550 Tracie Taylor-Paige,  
PC355 Heather Campbell.  
Email:  
diane.smith@northyorkshire.police.uk

### Useful Contact Numbers

Highways 03001312131

NHS 111

Local Dog Warden 01748  
829100

Action Fraud 0300 123  
2040



THE WENSLEYDALE SCHOOL  
& SIXTH FORM  
LEYBURN

## Wensleydale Cadets Shine at National Military Skills Competition

The Wensleydale School Combined Cadet Force (CCF) recently marked a significant milestone in its history by participating in its first-ever national military skills competition: **Exercise Ubique Hunter**. Held at Larkhill in Wiltshire and hosted by the 14 Regiment Royal Artillery, this prestigious event brought together seventeen teams from across the country. While fifteen Army Cadet Force (ACF) contingents were present, Wensleydale School held the unique distinction of being the **only CCF represented** at the event.

## Dales Heart and Craft

*Creativity, community and conversation*

Join our friendly creative sessions

*Every fortnight - June dates:*

Tuesday 2nd and 16th - Low Row - The Institute - 10am  
Tuesday 2nd and 16th - Arkengarthdale - The Hub - 2pm  
Tuesday 9th and 23rd - Muker - Public Hall - 10am  
Thursday 11th and 25th - Reeth - Memorial Hall - 2pm

**Free - Everyone Welcome!**

Our workshops are relaxed, sociable, led sessions with regular guest artists. No experience or talent needed – all materials are provided. Come for the creativity, stay for the chat, and enjoy a cuppa (and usually a biscuit or two!) in good company.

Free transport available through Reeth & District  
Community Transport

For more information:

Call 07513 635175 or [Lowrowinstitute.co.uk](http://Lowrowinstitute.co.uk)

Funded by The National Lottery COMMUNITY FUND



Despite being newcomers to the national stage, our cadets performed with exceptional skill, securing a **Bronze award**. Beyond the scores, the contingent was widely praised by organizers and fellow competitors for their professionalism, courtesy, and exemplary behaviour throughout the

# REETH AND DISTRICT GAZETTE LTD

weekend.

## A Test of Grit and Skill

The competition was a gruelling test of the cadets' training, featuring seventeen teams of 10-12 cadets. The events spanned a wide range of military disciplines, including:

- **Battlefield casualty drills** and navigation.
- **Survival skills** taught by the Gurkhas.
- **Abseiling** and training in built-up areas.
- A technical presentation on the **L118 Light gun**.
- High-intensity **room clearance paintballing**.

The team stayed at **Copehill Down**, a specialized MOD urban warfare training facility on Salisbury Plain. Living in one of the facility's "houses" meant a weekend with no electricity or home comforts, providing a true taste of life in the field.



## Leading from the Front

Senior Cadet WO2 Lucas Whitehead reflected on the intensity of the weekend, noting that the **section attacks** were a personal highlight. This demanding task required the team to navigate physical and mental exhaustion while using teamwork and

clear communication to suppress "enemy" fire from multiple locations.

What makes the team's Bronze success even more impressive is the limited training time available to them. While some competing schools benefit from up to four hours of training a week, the Wensleydale CCF operates on just **two 50-minute sessions**. However, the dedication of the 11 cadets—ranging from senior leaders to one-star recruits—and the guidance of one CFAV and three serving soldiers ensured they were ready for the challenge.

## Looking Ahead

Exercise Ubique Hunter has been described by the cadets as the most enjoyable experience in their CCF careers. The school is incredibly proud of their achievements and the manner in which they represented Leyburn on a national level.

With the experience of a Bronze medal under their belts and a reputation for excellence already established, the contingent is already looking toward next year. The goal is clear: to build on this year's success and secure a **top-three podium finish**. Based on the grit and professionalism shown this May, the future of the Wensleydale CCF looks brighter than ever.



Julia Pollard

# REETH AND DISTRICT GAZETTE LTD



## Eyes on the Skies Campaign

Yorkshire Dales environmental charity Friends of the Dales runs regular events to support its campaigning work. The following - free but donations welcome - events form part of its Eyes on the Skies campaign, speaking out about the ongoing criminal killing of birds of prey and petitioning for vital legal reforms. Head over to its website at [www.friendsofthedales.org](http://www.friendsofthedales.org) to find out more about the petition and add your name.

## Birds and Nature Walk at Malham

Wednesday 17 June 10am - 4pm  
Ian Court, Wildlife Conservation Officer for the Yorkshire Dales National Park will lead a two mile guided walk to Malham Cove offering a rare chance to look out for one of the Yorkshire Dales' most majestic birds of prey, the Peregrine Falcon. In the afternoon Friends of the Dales Trustee and Chair of Malhamdale Environmental Group, Jane Smart will lead a two mile circular walk to Janet's Foss to explore the area's fauna and flora.

Book at: [www.friendsofthedales.org.uk/events](http://www.friendsofthedales.org.uk/events)



## Wildlife Photo Walk with the Walking Photographer

Wednesday 1 July, 7.15 - 9.30 PM

Want to sharpen your wildlife photography skills? Join an immersive 'golden hour' photo walk led by British Wildlife Photography Award winner Rich Bunce (Walking Photographer), set within the 2,500-acre Broughton Sanctuary nature recovery project.

This relaxed 2-3 mile evening walk will take you through a rich mix of habitats, offering plenty of opportunities to develop your technique and learn how to capture the Sanctuary's diverse flora and fauna with skill, sensitivity, and respect. Bring your own device to take photos on!

Book at: [www.friendsofthedales.org.uk/events](http://www.friendsofthedales.org.uk/events)

Victoria Benn



**CHANGING YOUR CAR**

**IT'S A CINCH AT DORANTS**

**CHOICE OF THOUSANDS**

**PART EXCHANGE WELCOME**

**AND WE'RE LOCAL**

**SIMPLES**

Jed Collins, Bridge Garage, Reeth  
01748 884245



TALL TREES LANDSCAPES

HARD LANDSCAPING  
TREE SURGERY  
GARDEN DESIGN  
GARDEN MAINTENANCE

Fencing & Gates, Decking, Walling, Paths  
Driveways, Groundworks, Drainage  
Gabions, Sleepers, Turfing  
Tree Planting, Pruning, Removal  
Hedge Cutting, Stump Grinding.

If it's not on the list, get in touch  
anyway and we will try our best to help.

Phone Tom Hollingworth on  
07929322227

Talltreeslandscapes.co.uk  
Talltreeslandscapes@hotmail.com



SCENICVIEW  
GALLERY - Reeth

Original Landscape  
Photography

Showcasing the dramatic beauty of  
Swaledale, the Yorkshire Dales, and  
beyond.

- 📍 Right in the heart of Reeth
- 🖼️ Framed and mounted prints,  
plus greetings cards
- 📄 View the full range at:  
[www.scenicview.co.uk](http://www.scenicview.co.uk)
- 📷 Pop in and explore - dogs  
welcome

2027 Calendars Now Available



THE KINGS ARMS HOTEL, REETH

*Informal high dining*

10 ensuite | À la Carte | bar | Sunday menu

**served from 12:00 till 8:45**

*Muddy boots and paws welcome*

[www.thekingsarms.com](http://www.thekingsarms.com)



Sustainable  
Swaledale

## Sustainable Swaledale

### **Crayfish hatchery success for Yorkshire Wildlife Trust**

Yorkshire Wildlife Trust recently celebrated the release of the first of the young, white-clawed crayfish, raised in their crayfish hatchery site at Flamingo Land, North Yorkshire. More than 182 juvenile crayfish were released into Haverdale Beck, where their pregnant mothers had been collected back in summer 2025. Our only native crayfish species, the white-clawed crayfish is rapidly disappearing from Yorkshire's waterways due to competition and disease brought into the country by invasive signal crayfish. It is hoped that this hatchery signals a turning point. *Read more here:* <https://tinyurl.com/ykph8mx2>

### **Farne Islands named among UK's best wildlife hotspots for spring**

The Farne Islands have been featured in a roundup of the UK's best spring wildlife experiences, a shortlist put together by Simply Sea Views. Located a short boat trip away from Seahouses on the Northumberland coast, the islands are known for their seabird colonies and marine life, being home to more than 40,000 puffins between May and July, with dolphins and grey seals frequently spotted throughout the year. Matthew Fox, CEO of Simply Sea Views, said: "The UK coastline is genuinely world-class for wildlife, and spring is when it really comes into its

own...you don't need to travel abroad to have a truly extraordinary encounter with nature." *Read more here:* <https://tinyurl.com/yvw8t84j>

### **Sign up for Yorkshire Rewilding Network summer site visits**

This year's programme of Yorkshire Rewilding Network summer site visits includes several large-scale projects in and around the Yorkshire Dales—from Wild Ingleborough to Malham Tarn, and Broughton Sanctuary near Skipton. It's a unique opportunity to explore rewilding in a variety of contexts, and to access places you wouldn't be able to otherwise. The full programme is available to view on Eventbrite, and tickets are by suggested donation (minimum £1). *Read more here:* <https://tinyurl.com/mruww5x6>

### **Celebrate Swaledale's magnificent meadows & more at Hazel Brow Farm, Low Row**

Join in the National Meadows Day celebrations at Hazel Brow Farm on Saturday 4th July, and explore Swaledale's meadows at their midsummer best through a variety of activities and workshops for all ages. Plus, look out for other upcoming events, including Open Farm Sunday on 4th June; and the hands-on Livestock & Landscape Youth Group for 11-16 year olds, running throughout the summer holidays. *Find out more and book online at* [hazelbrowfarm.org](http://hazelbrowfarm.org)

### **GoFundMe campaign launched to Save Scorton Lakes**

Just a few miles from the busy A1(M) and Scotch Corner, Scorton Lakes is a natural haven, with wildflower meadows,

## REETH AND DISTRICT GAZETTE LTD

woodlands, and seven lakes attracting a wide range of wildlife, as well as six miles of footpaths and bridleways. Though the area is supposed to be protected for a period of 25 years (following the recent completion of quarrying activities), it is now under threat by a pending planning application for a large-scale holiday park complex. Campaigners say this would cause irreparable damage and are now fundraising to help continue their efforts. *Read more here:* <https://tinyurl.com/y54tc6sj>

### **Skilling up to assess and support newly-planted woodlands, with Yorkshire Dales Millennium Trust**

Many thanks to the Yorkshire Dales Millennium Trust (YDMT) Woodland team and local forestry consultant, Will Richardson, who led members on a woodland management training day recently. Having planted close to 50 sites over the last 5 years, we are now reaching a stage where some of the earlier sites are in need of planned maintenance—an area we needed to learn more about.

We visited several of our sites across the day to evaluate their condition and assess the support required going forwards. Evaluation included looking at the impact of ground and climate conditions on tree survival rates; visible threats including pests and diseases; assessing the need to restock or thin as the site matures; and how to handle appropriate tree guard removal (often against a background of heavy grazing by rabbits, sheep and deer).

We also explored options to rejuvenate woodland (including pollarding and

coppicing); and how to maximise the biodiversity potential of a site through choice of tree species, differing shrub layers and not forgetting the importance of dead wood. We will be drawing up action plans for various sites based on our learnings, with a view to incorporating them into our winter works programme. Watch this space!  
**Liz and Margaret**

### **Sustainable Swaledale Group**

**Email:** [info@sustainableswaledale.org](mailto:info@sustainableswaledale.org)

**Phone:** 01748 886 381 (Secretary)

### **Facebook Group:**

[Sustainable Swaledale](#)

### **Website:**

[www.sustainableswaledale.org](http://www.sustainableswaledale.org)

Sign up to our free newsletters, and choose to support us as a member for £10 (£5 concessions) per year.

### **CHARMING OLD COTTAGE IN THE CENTRE OF REETH (sleeps 6+)**

Open fire & background heating.

Fully fitted kitchen, dishwasher, fridge/freezer  
2 bathrooms, 2 double bedrooms, 1 twin bedroom & attic play area/fourth bedroom with 3 single beds.

Private, secure, rear courtyard area.

Dogs welcome.

Contact Denyse on 01325 722786 or

e-mail [denyse00@btinternet.com](mailto:denyse00@btinternet.com)

[www.holidaycottageswaledale.com](http://www.holidaycottageswaledale.com)

## *D. J. OLNEY*

### *Painter & Decorator*

### *Interior & Exterior*

### *Call*

**07801 026 006**

# A.J. CLACHER LTD

Established 1961

## PLUMBING & HEATING ENGINEERS

- Oil, Gas, LPG and solid fuel central heating installations
- All aspects of plumbing and heating installations
  - Specialists in boiler servicing and repair
    - Oil tank installations
    - Landlord Gas Safety Inspections
  - Bathroom installations and Plumbing
  - Air and Ground Source heat pumps

Tel 01325 468372 Email [info@ajclacher.co.uk](mailto:info@ajclacher.co.uk)

[www.ajclacher.co.uk](http://www.ajclacher.co.uk)

**VIESSMANN**

**GRANT**

**NIBE**

**Nu-Heat**  
Feel the difference



## G E BROWN & SON BUILDING CONTRACTORS

All Building Work Carried Out  
Damp Proof Course & Timber Treatment  
Specialist Joinery Work  
Work carried out by time-served qualified craftsmen

Email: [gebrownson@f2s.com](mailto:gebrownson@f2s.com)  
Telephone: 01748 886356

## The Old School Muker Art Gallery & Craft Centre



Guning Lane, Muker, Swaledale, DL11 6QG  
[www.theoldschoolmuker.co.uk](http://www.theoldschoolmuker.co.uk)  
Tel: 01748 886155  
email: [ask@theoldschoolmuker.co.uk](mailto:ask@theoldschoolmuker.co.uk)

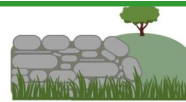
# REETH AND DISTRICT GAZETTE LTD

## Wensleydale and Swaledale Quaker Trust

In the late 17th century Philip Swale rode on horseback along Barney Beck from his home at Hartforth to Lownathwaite above Gunnerside surveying lead mines and overseeing changes that would bring about the great prosperity of that industry in Swaledale for the following two centuries. He did this in financial partnership with Philip Lord Wharton (for whom he worked as land agent); his uncle, Francis Smithson, a very wealthy cloth merchant in Richmond; and Robert and Adam Barker with their experience of lead mining in Derbyshire. Swale, Smithson and the Barkers were all first generation Quakers. In their wills Smithson (died 1671) and Swale (died 1687) left bequests not only to help Quakers but also the poor in their home communities. Those bequests became the founding Trusts of what is now the registered charity Wensleydale and Swaledale Quaker Trust. A key objective of that Trust is to maintain the Quaker Meeting Houses in Countersett, Bainbridge and Leyburn and five burial grounds. Another objective is to further the charitable purposes of the Trust. These objectives are fulfilled by using some of the rental income from 11 dwellings in Wensleydale with the rest going towards the maintenance of those centuries old properties.

The Trustees were very pleased to be able to give a donation towards the cost of producing large print editions of the Reeth Gazette.

**Pip Pointon**



**DAN WALLER**  
CONTRACTING SERVICES

- Agricultural And Domestic Dry Stone Walling
- Grant Walling
- Fencing
- Landscaping
- General Maintenance And Repair Work
- City and Guilds Qualified Joiner

Mobile: 07722 489518 Email: danwrw@outlook.com

## Sarah Louise Olney

Mobile Hairdressing

Facials

Massage

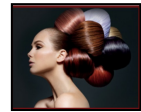
Reflexology

Indian Head Massage

Cruelty free products

Cruelty free hair colour

**Reeth 07875 926946**



## Yoga Class

**Tuesdays**

**09.30am – 10.30am**

**Reeth Memorial Hall**

**Contact Debbie for details**

**07707683317**

[yogadebbie@hotmail.com](mailto:yogadebbie@hotmail.com)

## Remedial Massage

*musculoskeletal conditions & injuries,  
headaches, stress and anxiety*

## Manual Lymphatic Drainage

*lymphoedema, post-surgery*

**Jennifer Thursfield** NAMMT  
MLDUK CNHC

Tel: 07889 546608 • Based in Richmond

[jtremedialmassage@gmail.com](mailto:jtremedialmassage@gmail.com)

[www.jtremedialmassage.co.uk](http://www.jtremedialmassage.co.uk)

# REETH AND DISTRICT GAZETTE LTD



Reeth Memorial Hall

## Reeth Memorial Hall

Tickets for concerts are available from Reeth PO or phone Glen Steward (01748 884989) or visit [www.reethmemorialhall.weebly.com](http://www.reethmemorialhall.weebly.com) - tickets  $\frac{1}{2}$  price u16s.

We want to say a special "Thank You" to Kathy Browne who has been our Booking Secretary for the last eight years. We rely totally on time given by volunteers.

Her husband Chris has also provided much support with our AV systems. You will both be very missed for all you contribute to locally!!

All concerts 8pm unless otherwise stated - doors 7.30pm

Glen Steward

### Saturday 27<sup>th</sup> June - Dixon County

An all-live and kicking country band with not a backing track in sight, performing a broad mix of country songs spanning the decades and guaranteed to get you dancing.

Tickets **£14** (£16 door).

### Friday 10<sup>th</sup> July - Everlys & Friends Tribute Show

A spectacular two-hour show by the UK's Number One tribute to The Everly Brothers plus special guest tributes to Hank Marvin, Buddy Holly and Jerry Lee Lewis by Ivan Marvin, Buddy Walker Pete Gill.

Tickets **£18** (£20 door).

### Saturday 18<sup>th</sup> July - Sherburn, Bartley, Sanders

Soul-stirring English and Celtic songs, exhilarating tunes and quick-witted banter from Chris Sherburn, Denny Bartley and Emily Sanders on concertina, guitar and strings.

Tickets **£17** (£19 door).

### THE HEALING COLLECTIVE

Encouraging health and well being with a range of therapies including

- \* Reiki \* Counselling \* Bach Remedies \*
  - \* EFT (tapping) \* Indian Head Massage \*
- Treatments for animals also available.

Coach House, Berry's Farm Shop & Café,  
Swinithwaite, DL8 4UH. t.0845 474 2383  
info@healingcollective.co.uk  
www.healingcollective.co.uk



## McGarry & Co SOLICITORS



Local Knowledge & Practical Advice

### Your Legal Companion

- PROBATE & ADMINISTRATION
- POWERS OF ATTORNEY
- WILLS
- NURSING & RESIDENTIAL HOMES
- AGRICULTURAL MATTERS
- LAND TRANSACTIONS

Offices At:

Barnard Castle

Hawes

mbmcgarry.co.uk

e. office@mbmcgarry.co.uk

t. 01833 600 160

DL12 8EQ

t. 01969 666 290

DL8 3QS



## *The Bridge Inn, Grinton*

*The Bridge Inn-Grinton is a charming old coaching inn, situated on the banks of the River Swale. We offer a warm welcome to families and dogs, serving, hearty pub food and cask ales.*

*With en suite accommodation available, our guests can enjoy various activities including playing traditional board games and darts.*

*Open 12pm until closing time. Serving food until 8:45 pm. It is recommended to book in advance to avoid disappointment.*

*Booking is available directly or on [Booking.com](http://Booking.com). For more information, call 01748 884224 or visit our [Facebook page](#) The Bridge Inn-Grinton.*



MEMBER OF  
THE SMAP INSTITUTE

## Swaledale Footcare

**Meg Squires MCFHP MAFHP**

Clinic Visits at Thornborough Hall Leyburn or  
Home Visits Including:

Toenail Cutting

Corn Treatment

Removal of Hard Skin and Calluses

Treatment of Thickened and Fungal Nails

Phone : 01748 884795 or Mobile: 07929065602

Email [meg.e.squires@gmail.com](mailto:meg.e.squires@gmail.com)

Member of the British Association of Foot Health Professionals



## PEST CONTROL

Don't let pests become a problem, call us right away for a professional, reliable and discreet service.

- Rats / Mice
- Wasps / Insects
- Nuisance birds



SCAN ME

☎ 07818 836527

🌐 [www.yorkshiredalespestcontrol.com](http://www.yorkshiredalespestcontrol.com)

## Fremington Village Hall

Redecorated and now with its own piano, the Village Hall (known locally as the Sunday School) is available to hire for all kinds of events, from regular classes, talks and community activities, to one-off functions like children's parties, lunches and dinners and special occasions such as wedding receptions and anniversary parties. The Hall has a small kitchen with electric cooker and microwave; toilet facilities including disabled toilet; and a small rear garden.

The Hall is a registered charity run by a small and dedicated volunteer committee. You can book the Hall by phoning or texting the bookings secretary **Carol Witham** on **07783 924827** or by email at [c.whitham149@btinternet.com](mailto:c.whitham149@btinternet.com)

## Wanted—Cottage to Rent

38-year-old composer is looking to rent a remote cottage somewhere in Yorkshire or the Lake District as a composing retreat. My own cottage is currently being renovated extensively, so I'm looking for an inspiring alternative for at least 1-2 years, potentially longer. If the cottage happens to already have a piano in it, that would be a dream, otherwise it should at least be possible for me to bring my upright. I am a very analogue person - the more old-fashioned and basic the better... all I need is a wood-burning stove, a candle, a bed and a desk.... And ideally a beautiful view. Please get in touch if you have any ideas: [yoelgamzou787@gmail.com](mailto:yoelgamzou787@gmail.com).

## Struggling to stay on top of your business finances?

Overwhelmed with paperwork? Struggling with cashflow? Worried about Making Tax Digital for Income Tax?

*I can take the stress out of bookkeeping so you can focus on your business.*

### Bookkeeping (daily, weekly or monthly)

- Catch-up and Year-End Support
- VAT Returns
- Credit Control & Supplier Payments
- Real-Time Reporting
- Software Set-Up & Training



**YORKSHIRE DALES**  
BOOKKEEPING SERVICES



**Book a friendly confidential chat with me today**

*Contact Me*



Email: [emily@yorkshiredalesbookkeeping.com](mailto:emily@yorkshiredalesbookkeeping.com)

Message via Whats App: 07797 730 596

ICB Qualified and Insured.  
Practice Licence Number 24213

# Diary Dates

## June

**Wed 3rd Jun** - Workout Wednesday  
Low Row Institute, 6.30pm and 7.45p,,  
£8 per class

**Tues 9th Jun** - Heart and Craft,  
Muker Public Hall 10am

**Wed 10th Jun** - Workout  
Wednesday Low Row Institute, 6.30pm  
and 7.45p,, £8 per class

**Thurs 11th Jun** - Heart and Craft,  
Reeth Memorial Hall, 2pm

**Tues 16th Jun** - Heart and Craft,  
Low Row Institute 10am

**Tues 16th Jun** - Heart and Craft,,  
Arkengarthdale Hub, 2pm

**Wed 17th Jun** - Workout  
Wednesday Low Row Institute, 6.30pm  
and 7.45p,, £8 per class

**Sat 20th Jun** - 10am to noon,  
Coffee Morning, & 6pm Church Festival  
Service, Reeth Evangelical  
Congregational Church

**Tues 23rd Jun** - Heart and Craft,  
Muker Public Hall 10am

**Wed 24th Jun** - Workout  
Wednesday Low Row Institute, 6.30pm  
and 7.45p,, £8 per class

**Thur 25th Jun** - Heart and Craft,  
Reeth Memorial Hall, 2pm

**Thur 25th Jun** - TLC@Gunnernside ,  
Felt Workshop with Cath Monks,  
Gunnernside Village Hall 7.30pm

**Fri 26th Jun** - Lino Printing  
Workshop, Low Row Institute 9-1pm

**Sat 27th Jun** - Low Row and Feetham  
Open Gardens

**Sat 27th Jun** - Dixon County, Reeth  
Memorial Hall

## July

**Sun 5th Jul** - Low Row Open Garden,  
10.30-4pm, Low Row Institute

**Fri 10th Jul** - Everlys and Friends  
Tribute Show, Reeth Memorial Hall

**Thur 16th Jul** - TLC@Gunnernside talk  
by Jane and Rebecca from Cutting Fine  
who reveal all about a Victorian  
Afternoon Visiting Dress. 7.30pm  
Gunnernside Village Hall

**Sat 18th Jul** - Sherburn, Bartley  
Sanders, Reeth Memorial Hall

**Sat 18th Jul** - Mobile Skip on Reeth  
Green

**Sat 18th Jul** - Coffee Morning, 10-12  
noon, Reeth Evangelical Congregational  
Church

**Sat 25th Jul** - Lino Printing Workshop,  
Low Row Institute 9-1pm

## August

**Sat 8th Aug** - Jazz Night - Saturday  
8<sup>th</sup> August 2026 - The Good Vibes Trio  
+ 2-course evening meal

@ The Station CafeBar, Richmond to  
book Call 01748 825967 or  
email [reservations@thestation.co.uk](mailto:reservations@thestation.co.uk)

**Sat 22nd Aug** - Paul Thompson "To  
Absurdity and Beyond", Reeth Memorial  
Hall



## Spotlight on your business?

Remember, the Reeth  
Gazette is happy to print (no fee) a  
longer piece spotlighting the work and  
developments of our long-term  
advertisers.

Contact the Treasurer for more  
details.

The Gazette is online:  
[www.2dales.org.uk](http://www.2dales.org.uk)

# REETH AND DISTRICT GAZETTE LTD



Serving food between 12pm & 8pm  
everyday

Free to join loyalty scheme  
**No Table Reservations**

Sky Sports on 3 TV's  
Pool Table & Dart Board  
Pet Friendly  
Monthly Quiz

Occasional Live Music  
**Warm Welcome**

Cask Marque accredited  
& CAMRA discount

[www.thebuckreeth.co.uk](http://www.thebuckreeth.co.uk)

Tel 01748 884 545

Email [stay@thebuckreeth.co.uk](mailto:stay@thebuckreeth.co.uk)



Bed and Breakfast, Reeth Road near  
Downholme. Spacious en-suite rooms  
in a peaceful location with panoramic  
views of Swaledale.

Traveller Review Award 2026  
[ellertonlodge13@yahoo.com](mailto:ellertonlodge13@yahoo.com)  
tel 07812 632459

**EDMUND HIRST DRY STONE WALLING**  
[edmundhirstdrystonewalling@gmail.com](mailto:edmundhirstdrystonewalling@gmail.com)  
07944 228175



## richmondprint

QUALITY PRINTING & DESIGN

*Bespoke*

wedding stationery...

For all your wedding stationery needs,  
we strive for the highest quality at prices  
to suit all budgets. From a simple digitally  
printed invite to lavishly hot foiled,  
thermographed or letterpress printed  
stationery, all guaranteed to  
complement your special day.

Call in to see samples and  
find inspiration.

1b Racecourse Road, Gallowfields Ind. Estate  
Richmond, North Yorkshire DL10 4TG

e: [richmondprint1@gmail.com](mailto:richmondprint1@gmail.com)

w: [www.richmondprintltd.co.uk](http://www.richmondprintltd.co.uk)

T: 01748 825999 f find us on Facebook

We are open Monday to Thursday 8.30am till 5pm  
Friday 8.30am till 12.30pm

Leaflets . Business Cards . Booklets . Invitations . Labels  
Letterheads . Envelopes . Invoice Books  
Calendars . Greetings Cards . Postcards  
Raffle Tickets . Menus . Posters . etc...

We are  
a Richmond  
Business & Tourism  
Association  
award winning  
company

We are also your one stop shop for all of your photocopying needs  
as well as comb & wire binding, laminating and encapsulating.