

REETH & DISTRICT GAZETTE

ISSUE NO. 350

AUGUST 2025



*Your local news magazine
for the two dales*

PRICELESS BUT DONATIONS WELCOME

REETH AND DISTRICT GAZETTE LTD

Memorial Bench Replaced at Ivelet Bridge

Members of the Reeth and District Angling Club have recently installed a replacement bench at the popular beauty spot, Ivelet Bridge.

The original bench was located just upstream of the bridge as a memorial to long standing and popular club member, Dick Kilpatrick. Dick passed away in 1998 and the bench was installed in 2000. The bench has subsequently been well used by walkers, anglers and numerous visitors to the dale.

Over time the upper Swaledale weather has taken its toll on the bench and finally earlier this year it became unusable.

A new bench was installed in early June, much to the delight of Dick's widow Eileen Kilpatrick. Eileen popped down to see the bench being put in place and to thank club members for their efforts.



*Eileen Kilpatrick and friend Jackie
McCartney trying out the bench*



*Club members Brian Sedgwick and
Mally Turner who installed the bench*

Thanks also go to Gunnerside Estate for allowing the bench to be located on their land and for fabricating some sturdy brackets to hold the bench in place.

Steve Clough

Bellegreen Holiday Cottage

Overlooking Reeth Green
Sleeps 7 in 4 bedrooms

www.bellegreen.com
Keith@bellegreen.com
0115 922257

Cover photo: 3-legged fun at the Reeth & District Sports Association Children's Sports Day in July, picture courtesy of Scenic View Gallery Reeth. More pictures page 38

REETH AND DISTRICT GAZETTE LTD

Gazette Management Committee

Chairman: Susan Miller

Longstone, Low Row, Richmond
DL11 6NA

Tel: 01748 886 358

E-mail: chairman@reethGazette.co.uk

Secretary: Sue Alderson

Holme View, Low Row, Richmond,
DL11 6PE

Tel: 01748 886 292

E-mail: secretary@reethGazette.co.uk

Editor: Jackie Pope

Guildy Hall, Muker, Richmond,
DL11 6QG

Tel: 07885 498676

E-mail: editor@reethGazette.co.uk

Treasurer: Andrew Bedford

Glory Be, Blades, Richmond, DL11 6PS

Tel: 01748 886 974

E-mail: treasurer@reethGazette.co.uk

Subscriptions: Elsie Whitehead

5 Place Hill, Reeth, Richmond,
DL11 6SD

Tel: 01748 884 132

E-mail: subscription@reethGazette.co.uk

Distribution:

Please contact Elsie Whitehead or
Sue Alderson

Published by

The Reeth & District Gazette Ltd.

Company Number: 06541854

c/o The Company Secretary

Andrew Bedford, Glory Be, Blades

Richmond, North Yorkshire DL11 6PS

Tel: 01748 886 974

E-mail: treasurer@reethGazette.co.uk

No material may be reproduced in whole or in part without permission. Whilst every care is taken for accuracy, the publishers cannot be held legally responsible for any errors or opinions in articles, listings or advertisements.

ADVERTISING

For information on advertising and prices, please contact the treasurer.

Advertising copy, should be sent to the editor.

The editor reserves the right not to publish any advert or article considered to be inaccurate or misleading.

All articles or items for inclusion should be sent to the editor

E-mail: editor@reethGazette.co.uk
or left at Reeth Post Office.

Donations

Can be made through our collecting tins in: CB Inn, Copper Kettle, Dales Bike Centre, Hudson House, Muker Tea Shop and Store, Punch Bowl Inn, Red Lion, Reeth Gift Shop, Reeth Post Office, Swaledale Woollens, and The Old School in Muker or by bank transfer to 77-91-29 40807260. using the reference "Supporter". Thank you.

Gazette Deadlines

The deadlines for the next two months are:

September issue: August 11th

October issue: September 8th

Please Note: We will endeavour to publish all suitable items submitted by the deadline date but this cannot be guaranteed and is at the sole discretion of the editor.

Posting The Gazette: Summer issues are often a little larger and so heavier. It will require a Large Letter size and will likely cost £2.00 2nd class, or £3.60 1st class but different sized issues may vary. Check with the PO.

Fremington Village Hall

Redecorated and now with its own piano, the Village Hall (known locally as the Sunday School) is available to hire for all kinds of events, from regular classes, talks and community activities, to one-off functions like children's parties, lunches and dinners and special occasions such as wedding receptions and anniversary parties. The Hall has a small kitchen with electric cooker and microwave; toilet facilities including disabled toilet; and a small rear garden.

The Hall is a registered charity run by a small and dedicated volunteer committee. You can book the Hall by phoning or texting the bookings secretary **Carol Witham** on **07783 924827** or by email at c.whitham149@btinternet.com



Home Run

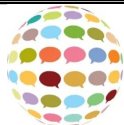
Pet sitting, House sitting, Dog walking

I offer a friendly, personalised pet and house sitting service in and around Swaledale.

Nicola – 07866 336924

nicola@homerundogsitting.co.uk

www.homerundogsitting.co.uk



**Bespoke
Tutors**

**Maths, Science,
English Private
Tutors**

Brown Hill Top
Low Row
Richmond

Tel. 01748 886201

Email: bespocketutors@gmail.com

www.bespocketutors.org.uk

Fremington
dalesbikecentre.co.uk

tel:01748 884908

Cafe & Cakery

SOUPER TUESDAYS

Homemade soup, bread roll,
slice of cake & hot drink

Only: £7 every Tuesday

**SHOW STOPPER
FRIDAYS**



Every week a 'Showstopper' of a cake!

Dales

Bike Centre



OPEN EVERYDAY!

Book a Stay
14 beds Bunk & Breakfast

**New & Ex Hire Bike Sales
Mountain/Road Bike Hire
E-Bike Hire & Sales
Bike Servicing**



FROG
bikes



Orange
MOUNTAIN BIKES

Swaledale and Arkengarthdale Business Forum

The Swaledale and Arkengarthdale Business Forum was set up a number of years ago, and the website is still up and running. However, the committee members have been quietly ageing and now the committee is unable to function, with people retiring/health problems etc. SABF is now in desperate need of new blood to run the committee, deal with members, oversee the website etc. Are you a younger person, running or contributing to a business, community-minded, who would like to reinvigorate the Forum? In reality, there is not too much to do, and with a few motivated people getting together, it would be simple to organise. If you're interested in helping out, it would be much appreciated! I have resigned as chair, but would be available in the short term to give an idea of what is involved. Please email judithdower59@gmail.com, or ring 01748 886366. Many thanks in advance!



S A B F

**Swaledale & Arkengarthdale
Business Forum**

**Members, get assistance to
enhance or update your entry**

**Non-Members, send your
details for a basic entry**

**visit our website
www.swaledale.net**

**Packed with useful information for
visitors and locals alike, including
a comprehensive services directory**

Dales Reyno-Vations



General Building & Maintenance

Property renovations / Roofing

Kitchen fitting / Joinery

Bathroom suites / Tiling

Painting & Decorating

Patios / Landscaping / Ground
maintenance

Free estimates / Insurance quotes

No Job too small

D Reynoldson

11, Place Hill, Reeth, Richmond

North Yorkshire, DL11 6SD

01748884309 / 07792458801

Email: david.reeth1@outlook.com

NYCC HOME LIBRARY DELIVERY SERVICE

**We deliver books, audiobooks,
DVDs and information to the
homes of people who find it
difficult to get to their local
library.**

**If you are interested in
receiving monthly deliveries
please contact**

North Yorkshire Libraries

Headquarters on

01609 533800

Or Catterick Garrison Library

on 01609 534595



Jurassic World - Rebirth by John Hunter

Let's begin by saying that I really enjoyed 'Rebirth' - the seventh in the 'Jurassic Park' series. It's fast paced, colourful and exciting - everything a summertime blockbuster should be....however - I feel moved to resort to an old film critic's trope to start the review; Cute kid in danger -check, improbable escapes from certain death - check, chief baddie gets chomped by largest and fiercest dinosaur - check. You get the picture. There's nothing really original here, either script wise or visually, although *some* esteemed critics have heralded this film as 'a return to form' and 'back to basics', stating the return of writer David Koepp (who penned the original back in 1993) as shedding the excesses of the previous three 'Jurassic World' movies. For me, there was more heart and soul in these films, with Chris Pratt and his team overseeing the 'park' dinosaurs, and ultimately being pawns in the 'release' of the creatures into civilisation. The last of the trilogy showed how dinosaurs had largely retreated to habitat closer to their own, and only more human interference posed danger. This time we are told the dinosaurs have further retreated to an equatorial band where humans are not allowed to visit.

Of course, it transpires that those pesky scientists had previously been



mutating dinosaurs to create 'bigger and better' beasts so as to entertain park guests who are growing tired of the same old creatures. The 'rebirth' story begins with quite an extended sequence (after the 'pre-credits' shocker) depicting Jonathon Bailey's sympathetic palaeontologist dismantling his museum ('only 40 visitors last week') but then recruited by Scarlett Johansson's (*slightly improbable*) ex special ops / dark forces 'mercenary' type who is on a mission to extract dino -blood which apparently can cure heart disease - it seems to make sense in the movie! - and so the usual trek to verdant climes ensues. Throw in a Hispanic family whose yacht has drifted into 'dino' territory, and we have all the ingredients for traditional 'Jurassic' fare. Of course there's the hissable villain who's prepared to let a child

drown to ensure success in his mission. ILM's visuals impress as always, but unfortunately nothing can match the exhilarating ocean-based scenes in the first third of the film with monster sized 'dino-whale/sharks' wanting our cast for lunch. Acting honours to everyone (especially the family) who keep straight faced and square jawed as required! There's a nice moralistic twist at the end which has been heavily signposted throughout and some lovely 'Spielberg' touches (he's Exec. Producer) - such as the rescue helicopter's light emerging from the misty dusk, which is *really* in the jaws of a mutated monster dino. Well worth catching on a big screen - but I still liked the last three more!

3D Cross-Stitch



The Nutmeg Gallery

Reeth DL11 6SP
(Reeth Dales Centre, off Place Hill)

Open April to October

Tue, Wed, most Thurs and some Saturdays.

During the winter and for other times ring

01748884926 or visit

www.3dcrossstitch.co.uk

Swaledale Botanical

The Flower shop Reeth



07928591534

Unit 5 The Reeth Dales Centre

The Punch Bowl Inn

**Outstanding fresh food served in a warm
& friendly atmosphere, plus 12 cosy
en-suite bedrooms with stunning
views of Swaledale.**



**FOR FURTHER DETAILS
OR TO RESERVE A TABLE**

Telephone: 0333 700 0779

Website: www.pbinn.co.uk

The Charles Bathurst Inn ARKENGARThDALE

**Outstanding fresh food served in
a warm & friendly atmosphere.**

19 en-suite bedrooms with amazing views.

Available for dinners, weddings & meetings.



**FOR FURTHER DETAILS
OR TO RESERVE A TABLE**

Telephone: 0333 700 0779

Website: www.cbinn.co.uk

REETH AND DISTRICT GAZETTE LTD



nh flooring

**The Carpet
& Flooring
Specialist**

- Amtico
- Karndean
- Panaget
- Brintons
- Westex
- & more



- Carpets • Wood Flooring • Laminates
- Vinyl Tiles • Vinyl Sheets • Rugs • Accessories

Contact us now for a FREE quote, advice or more information

t: 01748 822834 **m:** 07789 996526

e: enquiries@nhflooring.co.uk

w: www.nhflooring.co.uk

Unit 6 Borough Court, Borough Road, Gallowfields Trading Estate, Richmond. DL10 4SX

@nhflooring

@nh_flooring

@NH_Flooring

M.W Waste Services

Environmental & Drainage Specialists

Septic Tanks Emptied & Cleaned
Blocked Drains Cleared Fast
Grease Traps & Interceptors Emptied
Soakaways Rebuilt & Repaired
Gully Emptying & Street Cleaning
Refuse Collection
Septic Tanks Installed
High Pressure Drain Jetting
Mobile Steam Cleaning
Sewage Plant Maintainace
Industrial & Domestic Work Carried Out

Low Hang Bank Depot
Melsonby
Richmond
North Yorkshire
DL10 5NQ

Tel: 01325 377860/377850
24/7 Call Out

Http://www.mwwaste.co.uk

Clear Your Blocked Drains Fast With Our High Pressure Jetter

Free Quotes & Estimates



TALL TREES LANDSCAPES

HARD LANDSCAPING
TREE SURGERY
GARDEN DESIGN
GARDEN MAINTENANCE

Fencing & Gates, Decking, Walling, Paths
Driveways, Groundworks, Drainage
Gabions, Sleepers, Turfing
Tree Planting, Pruning, Removal
Hedge Cutting, Stump Grinding.

If it's not on the list, get in touch
anyway and we will try our best to help.

Phone Tom Hollingworth on
07929322227

Talltreeslandscapes.co.uk

Talltreeslandscapes@hotmail.com

REETH AND DISTRICT GAZETTE LTD

Wensleydale Concert Series

Chopin's death, and the mighty second sonata which includes the famous funeral march.

On Saturday August 16th at 7.30pm we are really pleased to welcome pianist Mark Bebbington (below) back to Wensleydale to play for us at St. Andrew's Church, Aysgarth. Mark is an internationally acclaimed musician who has a special interest in playing music by British composers and has received glowing reviews in the national and international press for his huge number of remarkable recordings (many being given 5 star reviews).



"...the lava tumbles out with astonishing force from Mark Bebbington, who plays with tremendous authority, supported by a vivid recording with an appropriately wide dynamic range."

BBC Music Magazine

Mark is no less impressive when heard performing live and he wowed our audience on his last visit in 2023. The first half of the upcoming concert features British composers and is supported by the John Ireland Trust and the Arthur Bliss Trust: Mark is including works by both composers. In addition he is playing works by William Alwyn and Doreen Carwithen. The second half of the concert is devoted to the music of Chopin including the Nocturne featured in the film "The Pianist", published after

Tickets are £20 at the door, and discounted when purchased in advance. Full details and online ticket sales can be found at our website

www.wensleydaleconcertseries.co.uk

Please note the Yorkshire Dales National Park have generously offered us free parking at the Aysgarth Falls National Park Visitor Centre. Alternative parking is at the Falls carpark next to the church (it is pay and display - sorry they no longer offer cheap parking for concerts). Anyone with mobility issues (not just blue badge holders) can be dropped off at the church door and there is a small number of parking spaces at the church if you need to park close - please let us know in advance on 01969 663026, speak to Carol or Liz).

I look forward to welcoming you on 16th August.

Carol Haynes

Come along and Sing along!

**Reeth Brass Band will play
songs of praise on Reeth green
on
Sunday 24th August at 3.00pm**

**Hymn sheets provided by Reeth
firework committee.**

**Collection will be taken towards
the firework displays in
November and January.**

Keld Resource Centre

Events for August and September

9 Aug - Source of the Swale Walk
10.00 am - 15.00 pm **Meet at Hoggarth's Bridge**

Walk route passes original Hoggarths, Firs and Stone House farmhouses to visit the ruins of Lane End lead mines. Then climb up past Hill Top Quarry, onto Ravenseat and follow the path past Smithy Holme and Anty Johns.

Distance: 6 miles. Difficulty:

Moderate. Please bring packed lunch

Charge: £7.50 pp

24 Aug - Smarber Chapel & Corpse Way Walk 10.00 - 14.30 Meet Holy Trinity Church, Low Row

A climb up Peatgate then follow the Corpse Way passing the Dead House. Onto Blades and then to Smarber Chapel. Descend and walk along riverbank to Isles Bridge and a visit to Low Row URC which replaced Smarber chapel. Please bring packed lunch

Distance: 4.5 miles. Difficulty:

Moderate

Charge: £7.50 pp

28 Sept - History of Cheese and Butter Making 14.00 - 16.00 Keld Resource Centre

Talk covering the rich history and long tradition of cheese and butter making in Swaledale. A reminder of a time when life was hard manual work, with almost every farm producing butter and cheese, using knowledge passed down through generations of women.

Refreshments served afterwards.

Charge: £10.00 pp

Full details and tickets available via

Ticket Tailor, or

Email helenguy47@gmail.com

Booking essential due to limited places.

J.N. & E.
Capstick
INSURANCE CONSULTANTS LIMITED

WINNER
CIR COMMERCIAL INSURANCE AWARDS 2017
BROKER CLAIMS TEAM OF THE YEAR

Specialising in farm, home and motor insurance

A local company, small enough to care, big enough to compete. So give us a try.

36 Main Street, Sedburgh LA10 5BP Tel: 015396 20124 Fax: 015396 20791	Market Square, Kirkby Stephen CA17 4QT Tel: 017683 72285 Fax: 017683 72346	Hawes Auction Mart Burtersett Road, Hawes North Yorkshire DL8 3NP Tel: 07498 041 187 Open during auction hours
---	--	--

www.capstickinsurance.co.uk

J.N. & E. Capstick Insurance Consultants Limited is authorised and regulated by the Financial Conduct Authority

Ivy Cottage



Owners Julie and Liz have their hearts in the Dales

"Delightful Cottage, perfect base for exploring the Dales"

-2025 Guest-

One bedroom
Langthwaite
Richmond DL11 6RE

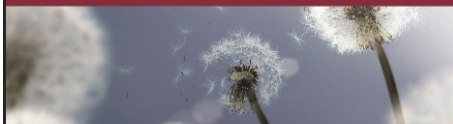
Contact us for more details:
Email: ivycottagepartnership@gmail.com



John Blenkiron & Sons

Funeral Directors

Incorporating Simon Barningham, Reeth



Thinking about a Funeral Plan?

choice
from Funeral Partners

A Choice Funeral Plan could give peace of mind and help your family with the cost of arranging a funeral and understanding your personal wishes.

For more information on our plans, visit your local branch, call us or go to blenkirons.co.uk/choice

24hr 01748 850033

Branches in Richmond, Barnard Castle, Catterick

Terms, conditions and limitations apply.

John Blenkiron & Sons Funeral Directors is a trading name of Funeral Partners Limited (Funeral Partners) which distributes Choice Funeral Plans, which are provided by Alternative Planning Company Limited (APCL). Funeral Partners is an appointed representative of APCL. APCL is authorised and regulated by the Financial Conduct Authority with firm reference number 965282. APCL and Funeral Partners are part of the Funeral Partners Group.

SWALE HAIR SPA



LOOK GOOD

FEEL GREAT

BE-WELL.

We are open **Tuesday- Friday**, plus every 5th **Saturday**.

Call us on: 01748 884627

Email us: info@swalehairspa.com

www.swalehairspa.com

Scouts

Swaledale



Notice of an Important Meeting

The Swaledale Scout Group has been part of the community for over 60 years but was suspended over a year and a half ago due to an absence of Leaders. Since then, no Leaders or sufficient helpers have come forward to enable us to get a Section going again.

There will be a meeting at 7.00pm on Wednesday 3rd September in Hudson House for those interested in keeping the Group going to come and discuss how that can happen.

Your ideas are valuable so please come if you want to be a Leader, a helper or have children who want to be a Beaver, Cub or Scout.

Nick Caldwell, Group Volunteer Leader

Swaledale Festival 2025

- a celebration of creativity in the
Yorkshire Dales

Swaledale Festival 2025 finished on 7 June after fifteen days filled with 60+ music, arts and walking events.

The festival opened with **Fauré in a Day** in Aysgarth, a choral workshop that brought singers of all levels together under the guidance of inspirational conductor **Sarah Latto**, setting the tone for two weeks of celebratory music-making in beautiful settings.

World-class artists performed for Dales audiences, including folk supergroup **Granny's Attic**, **Royal Northern Sinfonia** with trumpeter **Matilda Lloyd**, comedian **Mark Steel**, folksinger **Martha Tilston**, **Carducci String Quartet** and choral ensemble **Apollo5** (below).



A unique project saw workshops with British-Iranian turntablist and composer **Shiva Feshareki** giving students at **The Wensleydale School** a rare opportunity to explore sound in imaginative ways. (top right) Their final performance at St Mary's Church in Richmond was described by their teacher as "a brilliant experience" that left students "incredibly proud" of their creative journey.



The architect of nature recovery policy in England, **Professor Sir John Lawton**, delivered Swaledale Festival's annual Reeth Lecture, telling a packed Reeth Memorial Hall that "a very great deal" was happening in the Yorkshire Dales National Park, and across the country, to restore and create habitats, and that within two or three decades the prevailing story of nature in decline could change.

Twelve guided walks (picture below Higgs Castle renaturing project) explored the environment and natural history of the Dales, with one walk featuring an impromptu jamming session by **Jo Lawrence** and her musical family on violin, conch and tuba near the old lead mines of Gunnerside Gill.

Ten Young Artists Platform concerts brought young stars to the Festival. Pianist **Xiaowen Shang** dazzled with a virtuosic Ravel performance. Expert on



REETH AND DISTRICT GAZETTE LTD

the Italian Triple Harp, **Lise Vandersmissen**, played a UK premiere and a world premiere in one concert, highlighting the Festival's role in championing new music. And BBC New Generation Artist **Ryan Corbett** gave a masterful accordion recital in Arkengarthdale in an intimate performance that connected with the wildness of the surrounding moors and fells.

Orchestra Exchange saw 80 young musicians from **Richmond School Orchestra** in North Yorkshire and **Bammental School Symphony Orchestra** in south Germany uniting for a shared performance in St Mary's Church, Richmond, connecting pupils musically, culturally and socially. "The joint concert was simply outstanding," enthused teacher Stephen Boyd. "The individual schools played so well!"



On the Festival's final Friday, two special events took place within ten miles of each other. In Grinton's ancient church, sarod grandmaster **Amjad Ali Khan** (above) and his sons, **Amaan Ali Bangash** and **Ayaan Ali Bangash**, performed a captivating and spiritually beautiful concert that one audience member described as "song flowing through the sarod." Meanwhile, up the road in Muker Public Hall, **Muker**

Silver Band gave a heartfelt and rousing performance in tribute to their longtime conductor, the late **Norman Guy**. The concert, conducted by his son **Allan Guy**, was a celebration of musical legacy, community and brass.

Behind the scenes, professional musicians performed in local schools and care homes for students and residents, and beyond music, the Festival offered hands-on workshops in painting, photography, foraging, folk dancing and basketry.

A moment of reflection arrived with **Passing Through**, a multi-arts talk on two distinctive woodlands that invited audiences to savour each fleeting moment and go deeper into lived experience - an idea that resonated through the range of concerts, gatherings and walks in the Festival fortnight.

Swaledale Festival may be over for this year, but it will return from **23 May to 6 June 2026** with another outstanding offering of music, arts and walking in the northern Yorkshire Dales.

www.swalefest.org



REETH AND DISTRICT GAZETTE LTD

Reeth Gazette Collecting Boxes



We now have 11 collecting boxes around the two dales: CB Inn, Copper Kettle, Dales Bike Centre, Hudson House, Muker Tea Shop and Store, Punch Bowl

Inn, Red Lion, Reeth Gift Shop, Reeth Post Office, Swaledale Woollens, and The Old School in Muker. Thank you to all of them.

We've recently emptied 6 of the boxes:

Copper Kettle - £25.96

Hudson House - £20.57

Punch Bowl - £25.16

Red Lion - £60.93

Reeth Gift Shop - £172.35

Reeth Post Office - £154.16

A fantastic total of £459.13. Thank you to everyone who has donated.

HARKERS COACHES



Hill Top Garage, Reeth

Tele: 01748 884533

Pauls Mob: 07703 559959

**COACH,
PRIVATE
HIRE &
GARAGE**

Coach, Mini Bus and private taxi hire
General vehicle maintenance including services, tyre supply, fitting and balancing.

Orchard Caravan Park

Idyllic setting in the market town of Reeth, nestled next to the river Swale in the heart of beautiful Swaledale.

Orchard Caravan and Camping Park is the ideal location for a tranquil and relaxing break, or for those who seek an active holiday to enjoy walking and biking.

Static Caravan Hire

Camping pod hire

Touring, motorhome & Camping welcome

Email: Office@Orchardcaravanpark.com

Facebook: @Orchardcaravanparkreeth



CALVERT & JENKINSON LTD

— Building Contractor —

All Aspects of building work carried out from renovation to new builds, plastering to roofing.

www.cjbuildersltd.co.uk

cjbuildersltd@gmail.com

Andrew: 07837955869

Ryan: 07968463840

God's Outlaw

Film Show - The Story of William Tyndale - marking the 500th anniversary of his translation of the New Testament into English.

REETH MEMORIAL HALL 7.30
THURSDAY 14th AUGUST - Free admission

God's Outlaw is about international politics, church intrigue, cold-blooded betrayal, and false justice ending in a criminal's death. It is the true story of how William Tyndale became one of the most wanted men in England and all of Europe. Pursued by King Henry VIII, Lord Chancellor Sir Thomas More, and the Pope's personal legate Cardinal Wolsey, Tyndale darted across Europe to avoid capture - always pushing to complete the task that obsessed him.

The task was translating the Bible into English and publishing it for his fellow countrymen. Today William Tyndale is renowned as "the father of the English Bible," and is recognized as one of the major leaders of the English Reformation. But the story of how he lived and died as "God's Outlaw" will keep you on the edge of your seats.

This multi award-winning film stars Keith Barron (Duty Free, Coronation Street, DCI Banks), Roger Rees (Cheers) and Bernard Archard (Emmerdale, Doctor Who).

"A gripping tale, beautifully told" (Daily Mail)

Running time 1 hour 35 minutes - followed by refreshments

For more information contact Reeth Evangelical Congregational Church,
07582 575815 or email:
little@swaledale.org -
www.reethecc.co.uk

<p>OPEN ALL YEAR ROUND, EVERYDAY</p> <p>SWALEDALE WOOLLENS</p> <p>MUKER-IN-SWALEDALE, RICHMOND NORTH YORKSHIRE</p>  <p>Celebrating 40 Years</p> <p>The Quality is Legendary... ...The Choice is Endless.</p>	<p>TAKE HOME A PIECE OF THE DALES</p> <p>Call into our shop in Muker Upper Swaledale and see what unique garments we have on display from hand knit cardigans, sweaters, hats, scarves & gloves to machine knit sweaters & cardigans for both ladies & gents. We also stock sheepskin rugs, slippers & gloves.</p> <p>WE ARE OPEN EVERYDAY</p> <p>Tel. 01748 886251</p>
<p>Email: mail@swaledalewoollens.co.uk or visit our website where you can order online: www.swaledalewoollens.co.uk</p>	

Sarah Louise Olney

Mobile Hairdressing

Facials

Massage

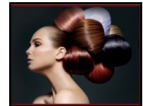
Reflexology

Indian Head Massage

Cruelty free products

Cruelty free hair colour

Reeth 07875 926946



YORKSHIRE FOOT CLINICS

Podiatry/Chiropody

Alex Kravchenko MChS, BSc Pod (Hons)

Nail cutting, callus, corns & ingrowing nails

All treated in the comfort of your home

Tel. Richmond 850020

Or Hawes 667449

Always insist on state registered



BlueBoxt - August Update

Summer Activity Afternoons - Join the BlueBoxt team for afternoons of creative fun for ages 4 to 12 years old. Three Sessions will be taking place from 1.00pm to 5.00pm on Thursdays 7th, 14th and 21st August 2025 at Leyburn Methodist Church Hall, DL8 5BB. (Earlier drop off and later collection may be possible - strictly by prior arrangement.) Registration costs £20 per child, per session which Includes healthy snacks and Teatime meal. Free FEAST Voucher places are available (issued through schools or North Yorkshire Together).

We've loads of exciting activities planned. Our *Crafty Crafters* will be making cards, models and amazing art. There'll be games, sports and play park adventures for our *Team Players*. Scavenger hunts and nature walks for our young explorers. Our *Melody Makers* and *Stage Stars* will be creating music and drama and, our *Kitchen Kadets* will be preparing some nutritious snacks and tasty treats too. Our fun engaging activities spark imagination, build confidence, and create lasting

Summer Activity Afternoons
"Fantastic activities for the holidays"

Indoor and Outdoor Activities
Crafty Crafts Team Players
Scavenger Squads
Kitchen Kadets
Melody Makers Stage Stars

Join the BlueBoxt team for an afternoon of creativity for the ages 4 to 12 years. Help us choose and help put in your creative, musical, sports, healthy and happy ideas.

You won't be able to fit everything into the sessions, but each day will be packed with healthy and happy fun!

Thursdays 7th, 14th, 21st August 2025
From 1.00pm to 5.00pm
Leyburn Methodist Church Hall, DL8 5AT
Between One Drop and The Slaughter Yard

£20 per child, per session
Includes healthy snacks and
teatime meal

Limited places - Early booking advisable at
www.wensleydale.org
email: info@wensleydale.org
call/message: Jennifer Rogers or Colin Bailey
Booking and information line: 01949 743802

friendships and memories. Come play, create, and discover with us!

Reeth Arts Festival - The team will be supporting this annual FREE event taking place on Saturday 30th August, from 10.30am. There will be music throughout the day and opportunities to create your own artwork with local artists. Search *reethartsfestival* on social media to find out more.

Looking Ahead To Autumn

Play, Record, Perform - Sundays 2.00pm-5.00pm at Thoraby Village Hall from September. Sessions for 11-19 years old cover different styles of music (other ages considered). Great for making music with like-minded young musicians. There will also be sessions with guest musician Paul Edis which will culminate in a performance opportunity as part of Leyburn Jazz Festival.

Light My Choir! - Mondays 7.00pm-9.00pm at Leyburn Methodist Church Hall from September. Sessions cover uplifting Gospel and Popular Music. Mixed voice choir (minimum age 16 years). The Choir will again join the worship team at St. Matthew's for their popular Jazz Eucharist service on Sunday 19th October as part of Leyburn Jazz Festival. This is a fun and friendly group open to all who enjoy singing for pleasure. Why not come along and give it a try?

Quiz night with Simon Eastwood - Friday 10th October at West Burton Village Hall, DL8 4JY. 7.00pm for a prompt 7.30pm start. Teams of 6 or come along and make a team on the night. Tickets £15 inc. two course supper. Our annual quiz is always a fun

REETH AND DISTRICT GAZETTE LTD

event - book early to avoid disappointment!

Grand Prize Draw - Tickets for our Grand Prize Draw are now available. Tickets £1 each - proceeds support our core activities. Prizes include SMART TV, Bluetooth Headphone and vouchers for various local retailers and eateries. The full list of prizes is available on our website or by request. Draw date: Wednesday 29th October, 2025.

Leyburn Jazz Festival - This year's festival takes place from Thursday 16th - Sunday 19th October at St. Matthew's Church, Leyburn. This year promises another great line-up of talented jazz musicians. You'll find returning favourites like Hot Club du Nord and Alligator Gumbo, established artists like Tony Kofi, Ian Shaw and Paul Edis, as well as emerging talent such as Jack Pearce. Over the four days of the festival, you'll hear everything from contemporary to standards in various styles. We have gypsy jazz, trad jazz, New Orleans-inspired jazz, the Great American Songbook, contemporary jazz, and the Northern Swing Orchestra will conclude the weekend on Sunday afternoon.

See printed brochure for full details. Available to download at www.leyburnjazz.org or pick up a copy from community information points.

To find out more or book places for our events and activities visit www.wensleydale.org or contact Colin Bailey on: 01969 745810/ 07711 211169 or email: info@wensleydale.org

T.A.R.Longstaff

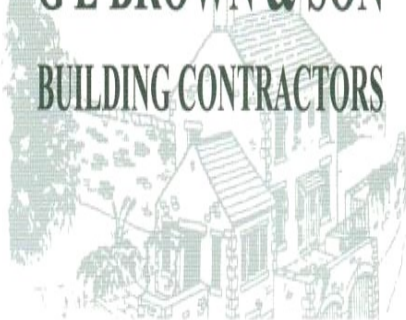
Mobile Hydraulic hose repairs in Reeth and surrounding areas, anywhere anytime.

Also mobile on site welding.

**Tel Percy on
07889725349.**

G E BROWN & SON

BUILDING CONTRACTORS



All Building Work Carried Out
Damp Proof Course & Timber Treatment
Specialist Joinery Work
Work carried out by time-served qualified craftsmen

Email: gebrownson@f2s.com
Telephone: 01748 886356



Sustainable
Swaledale

Sustainable Swaledale

Local Nature Recovery Strategy Consultation

North Yorkshire Council has launched a six-week public consultation on its Local Nature Recovery Strategy (LNRS)—a legal requirement for all local authorities under the Environment Act 2021. Its main aims are to 1) agree priorities for nature's recovery, such as increasing woodland cover or creating wetlands; 2) map the most valuable existing areas for nature; and 3) map specific proposals for creating and improving habitat for nature and wider environmental goals. The consultation will end the week commencing 11 August, and the new LNRS is due to be published by the end of the year.

Source: NYCC <https://tinyurl.com/mry542du>

New reserve in the heart of the Dales will return rainforests to Yorkshire

Yorkshire Wildlife Trust has announced the opening of a new nature reserve, Park Gill, in the Yorkshire Dales. Park Gill contains fragmented patches of temperate rainforest, a rare and threatened habitat type which remains in only a few locations across the British Isles. The habitat requires high humidity, regular rainfall, and mild temperatures that remain fairly stable throughout the year, making the perfect conditions for the

moisture-loving plants and lichens that temperate rainforests are known for.

Source: Yorkshire Wildlife Trust

<https://tinyurl.com/3jcxmtbu>

Tree planting rates hit their highest level in 20 years

Forestry Commission figures show that over the past year, 5,765 hectares of new woodland were established in England. This means that woodland creation rates over the past year were 27% higher than in 2023/24, and 156% higher than in 2021/22 (when the Tree Planting Programme was in its infancy). In addition, 888,000 trees were planted outside woodland, bringing the total area of tree canopy established and numbers of trees planted to 7,164 hectares; the equivalent to 10,000 football pitches.

Richard Chapman, Deputy Director for DEFRA's Nature for Climate Fund Tree Programme, said: "We're making a meaningful difference: reconnecting people with nature, restoring our landscapes, and putting down the roots for a greener, more resilient future."

Source: Forestry Commission <https://tinyurl.com/3ur4352y>

Seedling Potting on Day 21st June

A number of Sustainable Swaledale volunteers met at The Hub, Arkengarthdale to pot on seedlings and cuttings that have been growing in seed boxes for the last 9-18 months (some seeds take two winters to germinate). We potted on tea leaved, creeping and eared willows that had sprouted following the Yorkshire Dales Millennium Trust (YDMT) workshop held at Gunnerside back in October. We also potted on rowan, bird cherry, hazel, birch, alder and oak, all germinated from local seed/nuts collected from semi-

REETH AND DISTRICT GAZETTE LTD

ancient woodland with permission of local landowners.

We have now filled the two pallet collar creches at The Hub and the creches at Reeth Surgery are also full: All saplings large enough to plant on will be included as part of our fifth tree planting season this autumn—the final step in our continuing seed to sapling cycle.

Many thanks to YDMT for sponsoring the event and all the volunteers who gave up their time.



If you would like to join us for our seed collection walks this autumn; and/or get involved in our tree planting season (Nov 2025–March 2026), please get in touch by email: info@sustainableswaledale.org.

Yorkshire Dales National Park Sustainable Development Fund

People or local organisations looking to improve the environment in the National Park, in ways that will also benefit local communities or the local economy, are being invited to apply to the Sustainable Development Fund, which this year has a budget of £100,000.

Read more on the YDNPA website: <https://tinyurl.com/mryaej7m>

Meet The Yorkshire Naturalists Union: Who, what and why

Come and find out about the Yorkshire Naturalists Union (YNU), one of the region's oldest wildlife organisations; devoted to studying and recording Yorkshire's flora and fauna. Andy Millard, YNU Executive Committee Chair will be talking about the work of the organisation at the next Sustainable Swaledale Meeting, held at Reeth Memorial Hall on Thursday 4th September, starting at 7pm.

Andy formerly lectured in ecology and landscape science at Leeds Beckett University, and currently tutors for the Open University in environmental science. He is the YNU recorder for aculeate hymenoptera (infraorder of insects) and also helps to run the Leeds Naturalists' Club. His talk is open to all.

Liz & Margaret

Sustainable Swaledale Group

Find out more and join in...

Email: info@sustainableswaledale.org

Phone: 01748 886 381 (Secretary)

Facebook Group:

[Sustainable Swaledale](#)

Website:

www.sustainableswaledale.org

Sign up to our free newsletters, and choose to support us as a member for £10 (£5 concessions) per year.



ALL OCCASIONS CATERED FOR

HOT & COLD FOOD OPTIONS
CAKES & TRAYBAKES

Contact Anne & Claire:
07837 805413
clairewilliams10@hotmail.com

Find us on Facebook & Instagram
[@EA_Sarter_Catering](#)

Notice

THE CHARLES ALDERSON TRUST

The above Trust was established, in memory of Charles Alderson, for the purpose of relieving, in cases of need, persons resident in the former Rural District Of Reeth (the parishes of Arkengarthdale, Ellerton Abbey, Fremington, Grinton, Marrick, Melbecks, Muker and Reeth) who are sick, convalescent, disabled, handicapped or infirm, by providing or paying for items, services or facilities which are calculated to alleviate the suffering or assist recovery of such persons, in such cases where help is not readily available to them from other sources.

Applications for assistance should be made in writing to
The Clerk to the Trust,
Mrs C Steward,
2 Hillary Terrace, Reeth, Richmond,
North Yorks, DL11 6TG

D. J. OLNEY
Painter & Decorator
Interior & Exterior
Call

07801 026 006

A. HOWARD JOINERY

no job too small

01748 884045

andrewhowardjoinery@gmail.com

NORTHERN WALLS

**DRYSTONE WALLING
& LANDSCAPING**

Former National Trust
gardener with 20 years
experience
City and Guild Certificate in
Horticulture

www.northernwalls.com

Tel 0795 148 1239

S.J.R Plumbing Services

For all of your domestic
Plumbing requirements.

C & G/Advanced C & G Qualified
Reliable With Very Competitive Rates

Based in Reeth

01748-884036

Or 07977-297563



**Spotlight on
your business?**

Remember, the Reeth Gazette is happy to print (no fee) a longer piece spotlighting the work and developments of our long-term advertisers. Contact the Treasurer for more details.

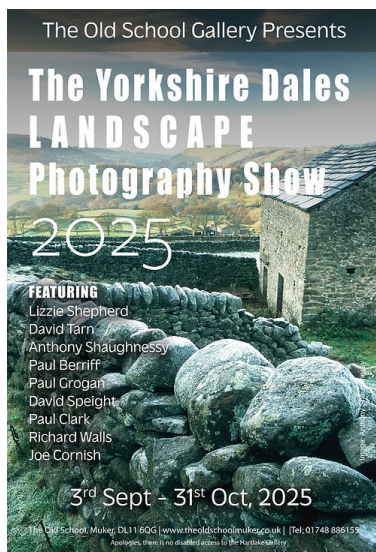
The Yorkshire Dales Landscape Photography Show

During September and October 2025, The Old School Art Gallery in Muker will be hosting the Yorkshire Dales Landscape Photography Show, bringing together a collection of images that showcase this unique part of the world.

Photographers confirmed include: Joe Cornish, David Tarm, Lizzie Shepherd, Anthony Shaughnessy, Paul Berriff, Paul Grogan, David Speight, Paul Clark and Richard Walls.

Gallery owner Richard says "We know from the many hundreds, perhaps thousands of conversations at our gallery in Swaledale, that visitors from all over the world fall for the charm and beauty of the Yorkshire Dales, so it's going to be a real pleasure to represent them through the eyes and lenses of some of our leading photographers".

The exhibition runs from 3rd September to 31st October at The Old School Gallery in Muker, DL11 6QG



THE HEALING COLLECTIVE

Encouraging health and well being with a range of therapies including
* Reiki * Counselling * Bach Remedies *
* EFT (tapping) * Indian Head Massage *
Treatments for animals also available.

Coach House, Berry's Farm Shop & Café,
Swinithwaite, DL8 4UH. t.0845 474 2383

info@healingcollective.co.uk
www.healingcollective.co.uk



Property Maintenance & General Building

Building work & property maintenance undertaken

Plumbing, tiling, plastering

Kitchen & bathroom fitting

Joinery works

Small jobs welcome

Free No Obligation estimates

Also detail plans prepared for planning applications

Contact Gary

Tel. 01748 886691 / Mob. 07896 147207

E-mail Swaddyman@gmail.com

CHARMING OLD COTTAGE IN THE CENTRE OF REETH (sleeps 6+)

Open fire & background heating.

Fully fitted kitchen, dishwasher, fridge/freezer
2 bathrooms, 2 double bedrooms, 1 twin bedroom & attic play area/fourth bedroom with 3 single beds.

Private, secure, rear courtyard area.

Dogs welcome.

Contact Denyse on 01325 722786 or

e-mail denyse00@btinternet.com

www.holidaycottageswaledale.com

Music Tuition for all ages with
www.colinbaileymusic.co.uk
07711 211169

Drums & Percussion; Vocals;
Piano & Keyboards; Music Theory;
'Get Musical' Workshops.

REETH AND DISTRICT GAZETTE LTD

St Andrew's Grinton Update

BRIC-A-BRAC STALL at **Reeth Market on Friday 22nd August**: Please do come and bring and buy from the stall which will be held on Reeth Green from 9am until mid-afternoon. All proceeds will go towards the upkeep of St Andrew's church.

CAKE STALL at **Reeth Market on Friday 8 August** hosted by St Andrew's for whole parish funds. Please bring and buy.

Conservation Group meeting at St Andrew's will take place on **Saturdays 9th August and 13th September**. All are welcome so please come and support our conservation efforts in the churchyard and a bit of 'outdoor gym' [or cleaning efforts indoors] from 10am - 12 noon. Freely available drinks and scones are on offer to entice you to join us!

Bat counts are at dusk on: **Wed 6th August at 9.42pm** and **Wed 3rd September at 8.37pm**. Meet on the church path if you would like to see the bats and help us count our resident bat population.

Bees - we need help to re-establish our bee colony and willing volunteers to train up to help care for them [novices are welcome to come and learn]. If you can help in any way, please contact a church warden or the Vicar to offer your services.

Please see the website or church noticeboard for further details.
www.swaledalearkengarthdaleparish.org.uk

St MARY'S CHURCH MUKER WINE PARTY

WITH

MUKER SILVER BAND

IN

MUKER PUBLIC HALL

ON

FRIDAY 29th AUGUST 2025

AT

7 – 30 pm

**Tickets £10 Including Supper
and 2 Glasses of Wine**

**TICKETS AVAILABLE FROM
CHURCH MEMBERS**

OR

AT THE DOOR

REETH CORNERSHOP & POST OFFICE

Groceries

Beers, Wines & Spirits

Milk, Dairy & Meat

Fruit & Veg

Household Goods

Books & Maps

Cards & Gifts

FOR ALL YOUR NEEDS

01748 884201



R.A.Lofthouse
Roofing Services
Kirkby Stephen

We SPECIALISE in traditional and modern slating and tiling

- Traditional slate specialist
- Re Roof / Repair work
- Slating, flagging & tiling
 - Lead work
- Velux replacement /installation
- Chimney repair/replacement

For a FREE quotation or any enquires please call:

Tel: 017683 48787

Mob: 07557738016

or email us on:

r.a.lofthouse@outlook.com

R. & W. GIBSON & SON Ltd.

CERAMIC WALL

& FLOOR TILERS

SHOWROOM NOW OPEN

Monday - Friday: 9.00am - 4.30pm

Saturday: 10.00am - 1.00pm

(or by appointment)

At Borough Road,

Gallowfields Trading Estate

DL10 4SX

Tel. 01748 - 822682 (Home)

Tel. 01748 - 821909 (Showroom)

"We cover the Dales"

Hudson House Centre Reeth

**Owned by the Community of
the Two Dales**

Community

- Gallery
- Learning
- Library
- Orchard
- Transport

National Park Centre

North Yorkshire CC

Police

Richmondshire DC

Swaledale Festival

Business Forum

Hot drinks vending machine

Internet & WiFi

Local notices & information

Meeting Rooms

Tourist Information & Shop

Open all year

7 days a week

See website for times

**Silver Street Craft Unit's
managed by Hudson House.**

**For all enquiries contact
Jill May.**

01748 884485

www.hudsonhouse.info

Nature helps lessen flood risks –
let's harness its power together 🧑🏫

Take our quiz to
test your knowledge ✅

or text hello ousewem 11
to 07700 137 717

Scan me



 OUSEWEM



Standard text messaging rates apply. All messages are anonymous. For more info: [HLP.city/privacy-policy/environment-agency](https://hlp.city/privacy-policy/environment-agency).
This project is funded by the EA. Due to data protection regulations, this service is aimed at adults

VICTORIA DESIGN GROUP LTD
Consulting Civil & Structural Engineers

**Consulting Structural & Civil
Engineers**

*Structural Surveys
All design work undertaken
whether domestic or commercial,
large or small*

Telephone: 01748 886717
Email: office@vdg.co.uk
Website : vdg.co.uk

Geoff Braithwaite
**Property Maintenance &
Painting and Decorating**

Tel: 01748 886 783

Mob: 07535 431502

Email:
geoff@mukerchapel.co.uk

Lady Interior Decorator

Painting & Decorating, Competitive rates
Established 30 Years: Based in Richmond
Free estimates, Friendly advice, Est 29 years

Call Yvonne on: 07838378836
Email: yvannesdecor@hotmail.co.uk



Monitoring NFM: why evidence matters

Monitoring natural flood management (NFM) is not just a technical step - it is a decisive tool that drives investment, land use decisions and flood resilience. Ousewem's latest short film, *Measuring impact: How monitoring shapes the future of NFM*, highlights this theme. Farmer Rob Ruddock, who features in the film alongside Joanna Olnier, shares:

"The monitoring will hopefully show the benefits. It's just the case that you need the monitoring to convince partners to get involved."

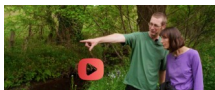
Rachel Flood, Ousewem's project manager, adds that monitoring helps us understand what works, where and why - confidence in NFM relies on clear evidence. This film also features academics and practitioners and was filmed at April's Yorkshire NFM Community of Practice and along Crimble Beck.

It asks key questions: which data really matters, how do we offer useful insight to both funders and landowners, and can we balance scientific rigour with practical scalability?

Watch the video:

Measuring impact: How monitoring shapes the future of NFM <https://youtu.be/YhIMhxxzS5M>

If you're interested in flood resilience projects or think your land could benefit from fully funded NFM measures, visit www.ousewem.co.uk or email us at ousewem@york.gov.uk.



THE OLD TEMPERANCE BOOKSHOP

Reeth, Richmond, DL11 6TE

Tel. 01748 884185

Christian books & cards,

Fairtrade crafts and food



Beside the village green in Reeth, we are 50 yards up from Reeth Evangelical Congregational Church

Opening times:

1.30pm - 4.00pm Mon, Thurs, Sat

10.30am - 4.00pm Fri

CLOSED from Sat 26th July. Reopen Mon. 4th August.

See us at Reeth Show on Mon 25th August.

Hindsight

Accountants LLP

Tony Fava

- Bookkeeping, Payroll and VAT Returns
- Annual accounts and tax returns
- Company Formations

11 Finkle Street, Richmond, DL10 4QA

Tel: 01748 822049

Email: info@hindsightaccountants.co.uk



Yoga Class

Tuesdays

09.30am – 10.30am

Reeth Memorial Hall

Contact Debbie for details

07707683317

yogadebbie@hotmail.com

REETH AND DISTRICT GAZETTE LTD

Church Opening Times and Services in August

3rd Aug	9.15 am	St. Mary's Muker	<i>Eucharist</i>
	10.30 am	St Joseph & Francis Xavier Richmond	<i>Mass</i>
	10.30 am	Low Row URC	
	11.00 am	Holy Trinity Low Row	<i>Eucharist</i>
	11.00 am	St. Edmund's, Marske	<i>Holy Communion</i>
	11.00 am	Reeth Evangelical Congregational	
	4.00 pm	Reeth Evangelical Congregational	<i>Refreshments from 3.45 pm</i>
	630 pm	Gunnarside Methodist	
10th Aug	9.30 am	St. Andrew's Grinton	<i>Eucharist</i>
	9.30 am	St Michael's Downholme	<i>Morning Prayer</i>
	10.30 am	St Joseph & Francis Xavier Richmond	<i>Mass</i>
	10.30 am	Low Row URC	
	11.00 am	Reeth Evangelical Congregational	
	11.00 am	St. Edmund's, Marske	<i>Morning Prayer</i>
	11.15 am	St. Mary's Arkengarthdale	<i>Holy Communion BCP</i>
	4.00 pm	Reeth Evangelical Congregational	<i>Refreshments from 3.45 pm</i>

Church of England

Reverend Canon Caroline Hewlett

Vicar of the Parish of Swaledale with Arkengarthdale

01748 884706 carolinejhewlett19@gmail.com

United Reformed Church

Rev. Nadene Snyman
Tees and Swale Pastorate
07876 707863
teesandswaleurc@gmail.com

Methodist

Reverend Julie Reid
Minister for the Two Dales
01748 823 149
Rev.julia.reid@gmail.com

Reeth Evangelical Congregational Church

The Revd David Levell
07582 575 815 www.reethecc.co.uk

Roman Catholic

Fr John Bane
01748 822 175
www.stjosephsfx.co.uk

REETH AND DISTRICT GAZETTE LTD

Church Opening Times and Services in August

17th Aug	9.15 am	St. Mary's Muker	<i>Holy Communion BCP</i>
	10.30 am	St Joseph & Francis Xavier Richmond	<i>Mass</i>
	10.30 am	Low Row URC	
	11.00 am	Reeth Evangelical Congregational	
	11.00 am	Holy Trinity Low Row	<i>Eucharist</i>
	11.00 am	St. Edmund's, Marske	<i>Holy Communion</i>
	2.30 pm	Gunnerside Methodist	<i>Baptism</i>
	4.00 pm	Reeth Evangelical Congregational	<i>Refreshments from 3.45 pm</i>
24th Aug	9.30 pm	St Michael's Downholme	<i>Holy Communion</i>
	9.30 am	St. Andrew's Grinton	<i>Eucharist</i>
	10.30 am	St Joseph & Francis Xavier Richmond	<i>Mass</i>
	10.30 am	Low Row URC	
	11.00 am	Reeth Evangelical Congregational	
	11.00 am	St. Edmund's, Marske	<i>Holy Communion</i>
	11.15 am	St. Mary's Arkengarthdale	<i>Baptism service</i>
	3.00 pm	Reeth Green	<i>Songs of Praise with Reeth Band</i>
	4.30 pm	Reeth Evangelical Congregational	<i>Short talk with a musical theme</i>
31st Aug	10.30 am	St Joseph & Francis Xavier Richmond	<i>Mass</i>
	10.30 am	Low Row URC	
	10.30 am	St. Mary's Arkengarthdale United Parish Service	<i>Speaker Baroness Angels Harris</i>
	10.30 am	Gunnerside Methodist	<i>At Leyburn</i>
	11.00 am	St. Edmund's, Marske	<i>Morning Prayer</i>
	11.00 am	Reeth Evangelical Congregational	
	4.00 pm	Reeth Evangelical Congregational	<i>Refreshments from 3.45 pm</i>

Religious Society of Friends (Quakers)

Quaker House, 7 Grove Square, Leyburn every Sunday at 10.30 am
 The Scout Hut, Quakers Lane, Richmond 2nd and 4th Sundays at 10.30am
www.dalesquakers.org.uk

FRIENDS'S SCHOOL AT REETH TRUST

Charity number 529603

Grant Applications for the Academic Year 2025-2026

Small grants are available to local young people, under the age of 25, attending **full-time** further education towards the cost of their studies. (Not transport costs)

Applications need to be received as soon as possible and before Saturday 6th October.

For an application form, please
contact: dotwillis55@gmail.com

Anyone for whist?

Mondays 1.30 pm

Quaker Close flats, Reeth



Hudson House

Your valuable community asset
Rooms for hire

Suitable for meetings, lectures, talks,
training or social events.

The Meeting Room - maximum of 30 people.

The Meeting Place (evenings only) - maximum of 10 people.

Access to PCs, Internet, printer, photocopier, laminator and kitchen facilities.

The Orchard Gallery for hire

Suitable for exhibitions of paintings,
photographs and other artwork.

Own entrance through the garden.

Sales can be handled for you.

For prices (special rates for community use),
bookings or more information please **con-**
tact Jill May on 01748 884 485 or
admin@hudsonhouse.info

A.J.CLACHER LTD

Established 1961

PLUMBING & HEATING ENGINEERS

- Oil, Gas, LPG and solid fuel central heating installations

- All aspects of plumbing and heating installations

- Specialists in boiler servicing and repair

- Oil tank installations

- Landlord Gas Safety Inspections

- Bathroom installations and Plumbing

- Air and Ground Source heat pumps

Tel 01325 468372 Email info@ajclacher.co.uk

www.ajclacher.co.uk

VIESSMANN



NIBE

Nu-Heat
Feel the difference



MUKER SHOW 2025

**WEDNESDAY 3RD SEPTEMBER
FROM 10.00 AM**

Join us for the 118th Muker Show. Prize Swaledale Sheep, Stunning Fell Race, Craft Tent, Trade Stands, Dales Ponies, Muker Silver Band, Children's Fancy Dress & Races, and the much-loved Traditional Singalong outside the Farmers Arms Pub

**PAY AT GATE
£10 ADULTS, CHILDREN UNDER 15
FREE
BUY ONLINE FROM TICKET TAILOR
OR WWW.MUKERSHOW.CO.UK**



WWW.MUKERSHOW.CO.UK

INFO@MUKERSHOW.CO.UK

Our curate's new adventure begins

If you've been around the churches, schools, village halls, woods or wild swimming spots in Swaledale or Arkengarthdale over the last few years, the chances are you've crossed paths with the amazing Rev. Linzi Blundell. Now, after four years of thought-provoking sermons, spiritual insights, laughter and cake consumption, Linzi is spreading her wings and heading for pastures new—the Parishes of Morton and Riddlesden near Bradford.

In true dales fashion, we couldn't let Linzi go without a proper send-off. Over 30 hardy souls from the dale clambered aboard a coach from Reeth on 1 July to attend her induction and collation in her new parish. We took the scenic route to St Luke's, Morton and two hours and much cheerful chatter later, we spilled out at the church, ready to witness Linzi take up her new mantle.

The service was wonderful, with choir, organ and congregation in good voice for some wonderful hymns chosen by Linzi. And the ceremonial bit was equally impressive, with Linzi being welcomed by the local great and the good, the Bishop of Bradford, the Archdeacon, the Deputy Lord Lieutenant, the Lord Mayor of Bradford, and the headteachers from

the two primary schools. The heartfelt commendation from our own vicar, Caroline Hewlett, brought a tear or two to some eyes as she reminded everyone of what Linzi has brought to our community and how fortunate Morton and Riddlesden are to have her as their new vicar.

Linzi, as ever, took it all in her stride, with her trademark warmth and good humour shining through.



Of course, it was a bittersweet occasion. We're delighted to see Linzi embark on her first parish of her own, but she'll be very much missed. She's been a champion for our communities, whether donning her wellies at Forest Church, visiting Reeth and Gunnerside schools, or fighting alongside parents to protect our children from the vagaries of North

Yorkshire Council's allocation of home to school transport. She's also been a steadfast and inspiring part of the activities in all our parish churches, always ready with a listening ear, a comforting hug and a big smile.

So, as Linzi takes on the challenges and opportunities of having her own parish, we wish her blessings and joy. And if she ever misses the dale, she knows she'll always have friends back here, ready to welcome her with tea and cake.

Thank you, Linzi, for everything. God speed!




two dales bakery
reeth

ARTISAN BAKERY & CAFÉ

Delicious breads and pastries
Food served all day including
vegetarian/vegan options
Well behaved dogs welcome
Visit us at the Reeth Dales Centre,
Silver Street, Reeth,
North Yorkshire, DL11 6SP
Please see our website
for current opening times
www.twodalesbakery.co.uk
☎ 01748 905001 📱 📺



New for 2025!

Visitor Centre Apprenticeships

Age 16+ £21,023 PA

(working 10 months PA)

We have 4 apprenticeships!

Retail - Catering - Chef -

Kitchen Assistant

Begin a career away from the classroom
where you can gain nationally
recognised qualifications, whilst earning
a great salary.

wensleydale.co.uk/work-with-us

SWALEDALE

'POTTING ON THE NEXT GENERATION IN THE TWO DALES'



PLAYGROUP

WWW.SWALEDALE-SEEDLINGS.NHS

REGISTERED CHARITY NO- 1049112

Find us on Facebook – Search Seedlings Reeth

Swaledale Seedlings playgroup

‘Stay and Play’ Session

Thursdays (Term-Time) at Reeth Memorial Hall
9.30am until 11:25am

Open to all children under the age of 5

£3 per child per session

Pop into a session or message us on Facebook
for further information





**YOUR LOCAL TRADITIONAL
CHIMNEY SWEEP**

NACS & HETAS qualified & registered

**We set ourselves very high standards
and take every care in your home**

We offer a comprehensive service

All types of chimneys swept to relevant BS Std.
Bird guards & cowls, etc. supplied & fitted
Advice freely given, problems solved
Carbon monoxide detectors
Chimney pots replaced

01765 688078
www.sweepinthedales.co.uk

Stove Refurbishment
Stove servicing and repair
Solid fuel stove installations
Stainless steel flexible linings
Stainless steel rigid flue systems
Only high quality components are used

HETAS qualified & registered installer

STOVE INSTALLATION





The Old School Muker

Art Gallery & Craft Centre



Guning Lane, Muker, Swaledale, DL11 6QG
www.theoldschoolmuker.co.uk
Tel: 01748 886155
email: ask@theoldschoolmuker.co.uk

STURDY TRAVEL

INDEPENDENT TRAVEL SPECIALISTS

Now at 1 Golden Lion Yard
Market Place, Leyburn DL8 5AS


For all your travel needs, home and abroad

Call: **01677 422826**
Email: **robert@bakewelltravel.co.uk**




Part of Bakewell Travel





Vacancy



Poppy Appeal Organiser for The Two Dales

Martin Sunderland is retiring after 10 years as Poppy Appeal Organiser and a vacancy arises for a new Organiser. The role is voluntary and involves:

- Ordering stock prior to the Appeal
- Preparing and distributing Poppies and collecting boxes throughout the two Dales.
- Liaising with Parish Councils for the supply of Wreaths etc.
- Collecting and counting donations at the end of the Appeal and maintaining accounts.
- Banking counted donations.

Please contact
martinsunderland93@gmail.com

The Kings Arms, Reeth

A New Landlady and Big Plans are brewing in Reeth

The Kings Arms Hotel in Reeth has a new landlady: Lisa Cessford, and she's stepping into the role with family by her side. Joined by her husband Billy Cessford and brother David, the trio are breathing new life into the much-loved country inn with a bold new vision and major investment.

After standing empty for too long, the Kings Arms is preparing for a dramatic revival. A £250,000 refurbishment of the bar, restaurant, and kitchen is set to begin shortly. Guests can expect a completely reimagined interior, a brand-new kitchen, and an upgraded bar featuring a curated selection of local ales, craft beers, premium wines, and fine spirits.

This winter, attention turns to the hotel's 10 bedrooms, with a further £200,000 investment transforming them into elegant, comfortable spaces with stunning views over Reeth's iconic village green and the sweeping Yorkshire Dales. The aim is clear: to offer a premium countryside retreat that combines charm, comfort, and exceptional service.

"Reeth is one of those magical places that still feels untouched—it's so perfect it could be a film set," says Lisa Cessford. "We want the Kings Arms to reflect that beauty while delivering the kind of hospitality people remember."

David, Lisa's brother, brings a lifetime of

hospitality experience to his role as Managing Director, having worked in 4-star hotels across the UK, serving A-list guests and even royalty. His attention to detail and commitment to high standards will ensure every guest experience is something special.

Billy Cessford joins as Creative Director, leading the transformation of the brand, visual identity, marketing, and interior design. Known for his work in film, television, and large-scale creative builds, Billy's eye for detail will shape a unique and memorable atmosphere.

Adding to the excitement, the Kings Arms is welcoming not one but two 2-Rosette chefs to the team. Their menus will focus on seasonal, locally-sourced produce, combining refined techniques with bold, honest flavours. From casual lunches to special occasion dining, food will be at the heart of the Kings Arms experience.

This is more than just a refurbishment—it's a full-scale revival of a historic venue at the heart of a picture-perfect village. Whether you're a local looking for a new favourite pub or a visitor seeking a luxurious countryside escape, The Kings Arms is about to raise the bar.



**The Swaledale and
Arkengarthdale
Archaeology Group
SWAAG**

The local archaeology and local history group normally holds a talk on the second Tuesday of the month throughout most of the year and also regular walks apart from the winter months. There is no public meeting in August but instead a group social event; a walk around the copper mining area at Middleton Tyas followed by a pub lunch. It is not too late to join the group for an annual fee of £20! The membership application form is on our website new-swaag.org under the 'join' tab.

As the name of the website suggests, the site has recently been re-designed to make access easier to its enormous range of information about the local area. It is a veritable treasure trove of information about not just local archaeology and history but also the woodland and flowers of the area, geology and genealogy to name but a few of the topics addressed.

In future articles I plan to pick out some of the highlights. As a 'taster', the tithe maps and apportionment from the 1840s are on the website courtesy of the North Yorkshire County Records Office also known as the North Yorkshire Archives. These maps enable you to identify what particular buildings were used for at that time. Interestingly there were two more pubs than is generally known in the centre of Reeth, the Low Inn and the Red Lion; at one time there were seven in all to cater for the needs of the lead miners!

Next time I will look at some features in the landscape which often go unnoticed.

Alan Mills

**REETH & DISTRICT
COMMUNITY LUNCHEON
CLUB INVITE YOU TO
THE AUGUST 2025
LUNCH AT "THE BLACK
BULL" ON THE 14TH
THE MEAL WILL BE
EITHER 2 OR 3 COURSES
AT THE PRICE OF £18.00
OR £22.00 INC
TEA & COFFEE. PLEASE
REMEMBER TO BOOK
YOUR REQUIREMENTS
IN ADVANCE.**

 **R.L.D.**
ROOFING & BUILDING LTD

Covers all aspects of roofing and building
0737 607 3816 07597 621 287
RLDroofing@mail.com

 **R.L.G.**
GROUNDWORKS CONTRACTORS LTD
0737 607 3816
info@rlggroundworks.co.uk
RLGgroundworks.co.uk

Martyn Leaver

Dry Stone Waller

- Farm or domestic work
- Drystone or facewalling
- Fence repairs and paving
- Misc jobs etc

**Thwaite 01748 886025
Mob: 07971 456 043**

REETH AND DISTRICT GAZETTE LTD



PEST CONTROL

Don't let pests become a problem, call us right away for a professional, reliable and discreet service.

- Rats / Mice
- Wasps / Insects
- Nuisance birds



07818 836527
www.yorkshiredalespestcontrol.com

SCAN ME



KARL LONGDEN PLUMBING

Reeth, North Yorkshire
karllongdenplumbing@yahoo.com
Tel. 01748 889951
Mob. 07969 329893

24 HOUR CALL OUT SERVICE





Yorkshire Dales Accountancy
Chartered Accountants

taxation & business advisors

Providing a broad range of accountancy and taxation services across a variety of sectors, including:

- Accounts • Business Tax • Personal Tax • VAT • Payroll
- Construction Industry Scheme • Capital Gains Tax
- Inheritance Tax • Making Tax Digital

Hawes - Leyburn

Kiln Place, Dryden House, Market Place,
Hawes, North Yorkshire, DL8 3RA

E: info@yorkshiredalesaccountancy.co.uk

T: 01969 678128

www.yorkshiredalesaccountancy.co.uk

Gunnerside Chapel

On 6th July last almost 60 people attended the Chapel to partake in the annual Midsummer Service, an event of such importance that it led to a delay in the start of quiz night at the Kings Head. This being a Methodist chapel, music was to the fore, with the pre-service singing led by John Waggett, Andy on the organ, Gayle Crisp marshalling the Gunnerside choir, Glen with a cornet accompaniment and a superb solo from Rachel.

The "service proper" was led by the ever popular The Rev Phil Dew, whose address left no-one in any doubt as to the absolute importance of the Holy Spirit to anyone attempting to lead a Christian life.

(And the food that followed was on its own well worth turning up for).

James Peacock



**Solid Fuel
Merchant
Bainbridge**

Good quality fuels at
competitive prices.
Deliveries to Wensleydale,
Swaledale and Coverdale.
No delivery too small.

Tel. 01969 650212/650465

Email:

jamespeacock@btconnect.com

www.james-peacock.co.uk

The Black Bull

Reeth's Oldest Inn, serving a range of Real Ales

**Comfortable en-suite
accommodation,
Traditional Pub Fayre served daily
Sunday Carvery (booking advised),
Coaches welcome**

**Tel: 01748 884 213,
Email: bookings@theblackbullreeth.co.uk,
Black Bull, Reeth, DL11 6SZ,
www.theblackbullreeth.co.uk**



Open Daily from 11am

Reeth Arts Festival

Reeth Arts Festival is now in its third year and has grown to 45 stalls. It is a "not for profit Arts Festival designed to showcase and celebrate local artists." The event includes "live art" which aims to bring different disciplines of art to life allowing visitors to join in.

The festival is on from **10.30am to 5pm on Saturday 30th August** and takes place next to Dorant 4x4 in Fremington near Reeth.

There's free parking available: it will be signed on the way in.

We have live music throughout the day on the stage & there will be food and drinks available.

There are portaloos available on site.

Please bring cash and card as some artists won't have card machines.

Imogen Hartley



Visitor Centre

Open Daily

Cheesy Afternoon Tea for two

£17 per person

Enjoy a range of sweet and savoury dishes showcasing our delicious cheese.

Yorkshire Wensleydale Cheese Experience

Enjoy daily demos, try our "Find Feathers" Trail

Quiz and peek inside the Creamery.

KIDS GO FREE IN SCHOOL HOLIDAYS

1897 Coffee Shop & Garden

Enjoy a coffee, cake and a range of light bites inspired by our cheese.

Cheese & Gift Shop

Everything you need to find the perfect gift.

Enjoy complimentary sampling as you shop and find a new way to perfectly pair your cheese.

Outdoor Seating

Take in the breathtaking views of the Yorkshire Dales whilst enjoying a coffee & cake in our dog friendly outdoor seating area

wensleydale.co.uk



*A new and unique place
to stay in Hudswell
near Richmond,
North Yorkshire*



**St. Michael's
LODGE**

stmichaelslodge.com

Hudswell Community Charity have acquired our former parish church and thoughtfully converted it into a **Lodge for walkers, cyclists and other visitors** to the Yorkshire Dales.

01748 343022 / 07521158338

enquiries@stmichaelslodge.com



What Good Sports!

Young and old have again delighted in the annual Reeth and District Sports Association Children's Sports Day, this year held on July 6th. Thank you to Gray from Scenic View Gallery in Reeth for supplying these fabulous photos which capture both the determination and the excitement of the young competitors. As Gray comments on his website, "What makes this event so special is the sense of community it creates and reinforces. It's more than just sport — it's about coming together, celebrating local life, and creating memories that will last well beyond the summer."



Rose Atkinson was one of the organisers. She writes:

"It is the end of an era for myself, Andrew Barningham and James Lindsley this year, as we all stepped down from our committee roles and welcomed a new team on board.

The 3 of us have run the sports for 8 years, resurrecting it after it had not run for years. We all wanted to get on board in 2017 because of exactly what Gray said - the special sense of community and creating memories that last not just beyond the summer but for life! We all have fond memories as

children taking part in the Sports Days, fancy dress costumes, parading down to the field with the Brass Band, and we wanted to be able to let the next generation - our own children - experience the that too.



In the first year, in 2017, we had Rishi Sunak judging the fancy dress and parading down from the band stand to the pavillion with us!

It has been an honour to be a part of such

a special day, and to be able to hand the reins



over to a great team, we know it will be a very special event in the village calendar for years to come."



REETH AND DISTRICT GAZETTE LTD



Thanks to Reeth Brass Band who were on hand with the musical entertainment.

Thanks to the parents and volunteer helpers who made the event run so smoothly.



And thanks to the children who took part - their "energy and enthusiasm brought the field to life" says Gray.

My thanks go to Rose for securing all the parental permissions to publish these fantastic photos.. Nothing was too much trouble: she told me "We will get in contact with the families and get permission 😊"
That's the lovely thing about a small village community "
Ed



Council consults public on the future of Richmond Swimming Pool

Members of the public have been invited to have their say on the future of a council-owned leisure centre, after a partial ceiling collapse resulted in the closure of its swimming pool.

Richmond Swimming Pool has been shut since April, after further investigations discovered "historic issues" with the building infrastructure, which require extensive repair work.

North Yorkshire Council, which acquired management of the complex from Richmond Leisure Trust, is now inviting the local community to share their views on what to do with the site. Councillor Simon Myers said the council "want to make sure that we gather as many views as possible from the public to help make an informed decision". "All options are being considered and no decision has been taken, so I would urge anyone who would like to express their views to take part in the survey," he said.

The council said, in addition to the

essential repairs required, other areas of the leisure centre have been deemed to be in urgent need of improvement, including replacing key pieces of equipment.

Proposed options for the site include:

- Undertaking only the essential works needed
- Undertaking essential work as well as some improvements, such as to changing rooms
- Rethinking which leisure services are offered at the site
- Proposed alternative uses for the site
- Closing the centre

The council is expected to discuss the survey responses this autumn, and has said any decision it makes on the Richmond site will be taken "in the context of the wider work for the countywide leisure investment strategy".

Myers added: "The closure of the swimming pools is disappointing news for customers, the local community - and for us as well - and we apologise for the ongoing disruption, and thank them for their patience."

Fiona Callow
BBC News, Yorkshire



Remedial Massage
*musculoskeletal conditions & injuries,
headaches, stress and anxiety*
Manual Lymphatic Drainage
lymphoedema, post-surgery

Jennifer Thursfield NAMMT
MLDUK CNHC
Tel: 07889 546608 • Based in Richmond
jtremedialmassage@gmail.com
www.jtremedialmassage.co.uk

Follow us:
f @WellburnCare

Call our
New Care Enquiry
Team today!

Are you or a loved one considering a care home?

Here at family run Wellburn Care Homes, we're first for luxury and comfort. All of which means your kind of home.

We also understand that finding the right care home for you or a loved one can be difficult. But with our expert staff on hand to guide you every step of the way, we'll take all the pressure off and help you make the right choice.



W
WELLBURN
CARE HOMES

And our Glenholme House Care home is right on your doorstep.

Sitting within 50 yards of the coast in Roker, Sunderland, Glenholme House offers luxury, comfort and that real home from home feeling.

We can tailor our offering to your exact needs, providing permanent stay, respite stay, day care and also a Time to Think package, which is typically a six week settling in period, giving you a taster of the home, before deciding if we're the right fit for you. With lots of choice, why not explore a new and exciting chapter, and discover what Glenholme House could offer you or a loved one.



Discover more at:
wellburncare.co.uk

Or call our New Care enquiry team on:
0191 694 1052



Sustainable
Swaledale

The Yorkshire Naturalists Union -
who they are, what they do and how they do it!

Andy Millard
YNU Executive Committee Chair

Reeth Memorial Hall
Thursday 4th September 2025 7pm

Come and find out about the YNU, one of the country's oldest wildlife organisations, which is devoted to studying and recording Yorkshire's flora and fauna



Free talk,
refreshments available

Notebook: Pen Paper - Free photo on Pixabay: fotobomb

R.Foster

Tree and garden maintenance

All aspects of tree work undertaken.

Hedges & shrubs maintained.

Garden tidying. Stump grinding.

Tree & shrub planting.

**Lawn care. Cutting, edging,
scarifying and aeration.**

Gutters cleaned.

Tel Robert on 07870 444360

Dales Police Crime Bulletin



Monthly Police Report 9th June – 7th July 2025.

We do not report crimes whereby victims could be identified, for example Domestic Violence or Harassment although they are included in the totals below.

Leyburn Police Station covers the areas of Arkengarthdale, Swaledale, from Hudswell up to the county border. Wensleydale from the Hambleton to Cumbria borders, Coverdale and Bishopdale.

Incidents of note:

Reported 10th June, Theft of 12 x Bottles of spirits value £270 from Co-Op Leyburn.

Reported 18th June, Theft of lead from Holy Trinity Church Wensley.

Reported 25th June, Theft of Motorcycle from Seal Houses area.

Reported 4th July, Theft of Yamaha Quad Bike from Seal Houses area.

Reported 4th July, Theft of Suzuki Quad Bike, John Deere Gator, miscellaneous tools /equipment.

2 - Concern for Safety.

16 - Abandoned Calls.

4 - Theft.

6- High way Disruption (Animals/ Floods/Trees etc.).

2 - Criminal Damage.

5 - Violence.

15 - Road Traffic Collisions (minor).

2 - Lost/Found.

11 - Suspicious Circumstances (Door to door sellers/Vehicles parked, etc.).

1 - Missing Person.

2 - Domestic Incidents.

7 - Concern for Safety.

6 - Road Related Offences (Door to door sellers/Vehicles parked, etc.).

3 - Animals/Wildlife.

1 - Antisocial Behaviour (nuisance).

1 - ASB (personal).

1 - ASB (environmental).

1 - Civil Dispute.

In total 111 calls were received reporting either the above or making general enquiries.

North Yorkshire Community Messaging is a free email messaging service from North Yorkshire Police and the office of the Police, Fire and Crime Commissioner providing news and updates on policing matters relevant to you and your local community you can sign up to North Yorkshire Community messaging by visiting the NYP site or if you wish contact me, Donald.watson@northyorkshire.police.uk providing your First Name, Last Name, House number/Name, Postcode, Mobile number and email address and I will sign you up.

The Neighbourhood Team will continue attending Town/Parish meetings and Community drop ins/events duties permitting.

PCSO 5232 Don Watson

PC 355 Heather Campbell

PCSO 5550 Tracie Taylor-Page

M. GUY - PLUMBING

For all your plumbing requirements

AGAS & RAYBURNS SERVICED

kathrynguy@designermakersmarket.co.uk

Tel: 01748 - 825640

FLOOR TILES CLEANED & SEALED.

Kitchens Conservatories Hallways Bathrooms Fireplaces

CLEAN & SEAL

Tel: 01748 811452 / Mobile: 07961 460020

Your Floor Tiles Cleaned & Sealed No Fuss No Hassle No Mess All Tiles

Sandstone Terracotta Travertine Slate Flags

Limestone Encaustic Ceramic Marble Vinyl

John Lord

johngrahamlord@gmail.com



CHANGING YOUR CAR

IT'S A CINCH AT DORANTS

CHOICE OF THOUSANDS

PART EXCHANGE WELCOME

AND WE'RE LOCAL

SIMPLES

Jed Collins, Bridge Garage, Reeth
01748 884245



OVERDALE STUDIO & GALLERY

The work of
international
award-winning
Artist Martin Lever



MARRICK
nr REETH
DL11 7LQ

Viewings by
appointment only

07513072773

martin@artbymartinlever.com

artbymartinlever.com



REETH AND DISTRICT GAZETTE LTD



**SWALEDALE
MOUNTAIN
RESCUE
TEAM**



**In an emergency DIAL 999 ask for
the POLICE then**

**Mountain Rescue / Cave Rescue /
Mine Rescue / Flood Rescue**

Charity Commission Registration No:
1201870, providing Mountain and Cave
Rescue in the Northern Yorkshire
Dales

The team is made up of highly trained
volunteers available, 24/7 in any
weather, any time of the day or night.

MOUNTAIN & CAVE RESCUE TEAM

**On average we respond to between
40 and 50 calls each year.**

In 2024 we attended 53 incidents.

**Incidents 8th June 2025 to 9th July
2025**

3 Incidents this edition

Incident 22: 02/07/2025: Called in
the afternoon by the Ambulance
service to rescue an injured walker in
Gunnerside Gill. The group of walkers
were reported as almost at the village,
but a quick search by first team
members found them still making
steady progress off the hill.
Ambulance and team members assisted
them to the village.

Incident 21: 14/06/2025: Called by
the Ambulance service to assist a
runner following a medical emergency,
treated by the team and evacuated to
the air ambulance. Thanks to all the
runners and supporters for the quick
call and pictures.

Incident 20: 13/06/2025: Another
early start, called by the Police to
search for a missing person in the
Reeth area. Located safe and well
later.



Incident 21

**A huge thanks to Bedale and Aiskew
runners who have raised a massive
£3042 for the team this year**

**Thanks to the everyone for their
ongoing support**

SMRT

Lengthwaite - Arkengarthdale

RED LION INN

Free House

Real Ales – Bar Snacks

Books & Maps

Tel. 01748 884218

Concert In Memory Of Norman Guy

With Muker Silver Band
& Friends



Join us for an afternoon of music remembering the talented life of Norman Guy. Playing a mixture of his arrangements and favourite pieces, Muker Silver Band with friends from many other bands invite you to enjoy your afternoon in the show field, listening to great music and reminiscing with stories of Norman.

6th Sept 2pm, Free Entry
The Show Field, Muker

Entry to this concert is free, donations are welcome. Proceeds will be split between Stroke Association and The ME Association for Norman's grandchildren who he loved so much.

Stroke
Association



Leyburn Arts and Community Centre

During August things usually go quieter as the schools break up and we are in holiday mood until September, but not for us! We have 3 exciting live music and live screening events coming up as well as our regular variety of Friday films.

The first is the Jayne Darling 'Celebrate the 40's' on Saturday 2nd August at 7.30pm. Tickets £12. Jayne has visited us before and is back by popular request, singing classic songs from the era. The second is 'An Evening with Snake Davis' the widely known rock soul and jazz sax player who has played & recorded with artists ranging from James Brown to Tina Turner, The Eurythmics, Paul McCartney and Amy Winehouse. Tickets £12, on Saturday 9th Aug at 7.30pm. The third is also a very popular, back by request, a new concert live on screen, Andre Rieu's 2025 Maastricht Concert: Waltz the Night Away, tickets £12, Sunday 31st August at 2pm.

Another new event is our Community Dog Walk on Sunday 24th August. Registration is at 1.30pm and you have a choice of 3 walks around Leyburn including the popular Shawl. Free (but donations appreciated) and includes a free raffle and treats for the four-legged participants.

Early September we screen the National Theatre Live production of 'Inter Alia' - a new play by Suzie Miller. Jessica Parks, played by Rosamund Pike, is a smart Crown Court Judge at the top of her profession.

For more information on all our events please see the website, pick up a flyer or tel us on 01969 624510.

Jeannie Bishop

Richard Taylor Property Services

Kitchen Fitting
Kitchen Renovations and Repairs
Painting and Decorating
Tiling
Cabinetry & Joinery
Holiday let Renovations & Repairs
Building Maintenance
Pressure Washing
Garden Maintenance

Call Richard on 07960 411330 for a quote



Samples of work on
Facebook & Instagram



Work from local artists and crafters
Bespoke Workshops Available
Coffee and cakes
Dogs and children welcome

Open daily (except Sundays) 11am to 4pm

Burtersett Road, Hawes, DL8 3NP

Tel: 07474 138536

info@chapelgalleryhawes.com

www.chapelgalleryhawes.com

A Right Royal Garden Party



Four long standing Volunteers at Reeth Community Orchard were invited to a Garden Party at Buckingham Palace on May 20th in recognition of their efforts and

achievements over the past 20 years. Yvonne Howard and Maggie Kentsbeer were unable to attend but Gill Hayes and Eileen Martin were delighted to accept the invitation and were accompanied by Gill's husband Tony, and by Alison Tupman, Treasurer of The Orchard. Included among the Royal hosts were the Prince and Princess of

Wales. With perfect weather, the Palace gardens and roses in full bloom, it was a truly memorable occasion for everyone who was there.

Alison Tupman



Marrick Priory

Outdoor Education and Residential Centre

**Songs
with
Scones**

*Light Musical Entertainment
from Treble Clef
followed by refreshments*



🌟🌟 VENUE

The Priory Chapel 🌟

🌟 **Saturday 6th
September
2.30 - 4.30pm**

🌟 **Tea .. cakes
& scones**

**Buses to Priory
Grinton Field
2pm**

**Tickets £12 from Reeth Post
office**

**Or ring Kathy 01748 886763
or trewbycathy@gmail.com**



Reeth Memorial Hall

We had some great concerts in July. Thanks to everyone who came and supported us. All proceeds go towards the upkeep of the hall.

Friday 22nd August - Winter Wilson

Kip Winter (vocals, flute, piano accordion, guitar) "simply has a voice to die for" (John Roffee, Maverick Magazine), whilst Dave Wilson (vocals, guitar, banjo) is now widely recognised as one of the UK's very best contemporary folk and blues songwriters, with his songs sung in folk clubs all over the world.

Tickets **£15** (£17 door).

Friday 19th September - Nick Parker

Nick's songs are often tongue-in-cheek and cheerful, and on the rare occasion when fun is poked (usually at himself) it is always with a wry smile and an element of satire. The audience are often encouraged to be a part of the show, collectively becoming Nick's duet partner.

"One of my favourite live performers."

Tickets **£14** (£16 door).

Glen Steward

Tickets for concerts are available from Reeth PO or phone Glen Steward (01748 884989) or visit

www.reethmemorialhall.weebly.com

tickets ½ price u16s.

All concerts 8pm unless otherwise stated - doors 7.30pm

PROPERTY MAINTENANCE

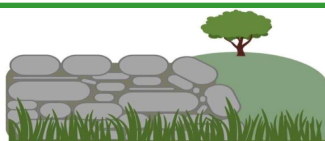
General Building Work, Dry Lining, Decorating, Electrical Work, Kitchen Fitting, Joinery, Paving, Garden Maintenance, Roofing, pointing & guttering work. Small jobs welcome.

Free estimates.

Contact Martin or Django

Tel 01748 886 465 Mob: 07813 715 120

Email: martinkiss1960@gmail.com



DAN WALLER
CONTRACTING SERVICES

Dry Stone Walling

Mobile: 07722 489518

Email: danwrw@outlook.com

McGarry & Co
SOLICITORS



Local Knowledge & Practical Advice

Your Legal Companion

- PROBATE & ADMINISTRATION
- WILLS
- AGRICULTURAL MATTERS
- POWERS OF ATTORNEY
- NURSING & RESIDENTIAL HOMES
- LAND TRANSACTIONS

Offices At:

Barnard Castle

Haives

mbmcgarry.co.uk

e. office@mbmcgarry.co.uk

t. 01833 600 160

DL12 8EQ

t. 01969 666 290

DL8 3QS



The Bridge Inn, Grinton

The Bridge Inn-Grinton is a charming old coaching inn, situated on the banks of the River Swale. We offer a warm welcome to families and dogs, serving, hearty pub food and cask ales.

With en suite accommodation available, our guests can enjoy various activities including playing traditional board games and darts.

Open 12pm until closing time. Serving food until 8:45 pm. It is recommended to book in advance to avoid disappointment.

Booking is available directly or on [Booking.com](https://www.booking.com). For more information, call 01748 884224 or visit our Facebook page [The Bridge Inn-Grinton](#).



Swaledale Footcare

Meg Squires MCFHP MAFHP

**Clinic Visits at Thornborough Hall Leyburn or
Home Visits Including:**

Toenail Cutting

Corn Treatment

Removal of Hard Skin and Calluses

Treatment of Thickened and Fungal Nails

Phone : 01748 884795 or Mobile: 07929065602

Email meg.e.squires@gmail.com

Member of the British Association of Foot Health Professionals



Reiki Master Practitioner

Energy balance for holistic health using the traditional Usui Reiki practice.

Reiki can help restore emotional, mental, physical and spiritual wellbeing. Research suggests it can reduce pain, anxiety and blood pressure as well as support the improvement of other conditions.

To book a Reiki consultation or find out more, please call Mike on 07721 886254
(Based in Swaledale)

SWALEWOODS LTD.

FORESTRY & ARBORICULTURE
AGENTS, CONSULTANTS & CONTRACTORS



Whether you have a fruit tree in need of pruning, a large commercial timber plantation to manage, a hedge to cut, or ancient woodland to restore, we offer a competitive service to help you get the most out of your trees!

Contact Chris Curry at Swalewoods for all tree surgery and forestry services:

M: 07528 684617

E: chris.curry@swalewoods.co.uk

W: www.swalewoods.co.uk

O: West View, Healaugh, Richmond, North Yorkshire. DL11 6UD



| Forestry Management | Stewardship Schemes | Woodland Establishment | Tree Inspection | Tree Surgery |



MICHAEL GUY ELECTRICAL

FULLY QUALIFIED ELECTRICIAN

Over 20 years experience working in
the dales in all areas of
electrical work.

Some of my services include:

Complete rewires | Electrical installation
condition reports | Electrical vehicle
charging points | Additional & alterations
to socket & lighting points |

Replacement of storage heaters to modern
eco panel heaters.

Contact Michael :

T: 01748 886097 | M: 07980130017

Mail: info@michaeltguyelectrical.co.uk

Website: Michaelguyelectrical.co.uk

APPROVED ROINTE HEATER INSTALLER

NICEIC APPROVED CONTRACTOR

ATTRACTIVE COTTAGE FOR RESIDENTIAL RENT IN REETH

• QUIET CENTRAL LOCATION

• SUITABLE FOR ONE

• CENTRAL HEATING

• AVAILABLE FROM NOW



CONTACT: 07969 823232

helen@swaledalemuseum.org

Diary Dates

August

Thurs 14th Aug - film show, "God's Outlaw" - the story of William Tyndale, in Reeth Memorial Hall, 7.30pm

Sat 16th Aug - Coffee Morning 10-12noon, Reeth Evangelical Church

Fri 22nd Aug, Winter Wilson, Reeth Memorial Hall, 8pm

Fri 22nd Aug - Bric a Brac at Reeth Market in aid of St Andrew's Grinton

Sun 24th Aug - Songs of Praise with Reeth Brass Band, 3-4pm, Reeth Green

Sat 30th Aug - Reeth Arts Festival

Sun 24th Aug - Smarber Chapel and Corpse Way walk, 10.30, Holy Trinity Church Low Row

September

Wed 3rd Sept - Muker Show

Sat 6th Sept - Songs and Scones at Marrick Priory, 2.30pm

Fri 19th Sept - Nick Parker Reeth Memorial Hall 8pm

Sat 27th Sept - Harvest Coffee Morning & Supper, Reeth Evangelical Congregational Church

October

Fri 10th Oct - Urban Folk Quartet, Reeth Memorial Hall 8pm

Sat 11th Oct - John Tams (contact us to join waiting list) Reeth Memorial Hall, 8pm

The Gazette is online:
www.2dales.org.uk

Yorkshire Hosepipe Ban

From 11th July, there have been hosepipe restrictions in place across Yorkshire following the driest spring on record.

Everyone supplied by Yorkshire Water needs to stop using hosepipes for things like:

- Watering the garden or plants in your garden at home
- Cleaning private vehicles or boats
- Filling or maintaining a swimming pool, paddling pool, hot tub or cold-water plunge pool at home
- Filling or maintaining a domestic pond or ornamental fountain
- Cleaning your home's walls or windows yourself
- Cleaning paths, patios or artificial outdoor surfaces

You can still carry out these activities if you're using water from a bucket or a watering can. You can also use water that is not sourced from mains water, such as grey water, rainwater from a water butt through a hosepipe, or private boreholes for example.

Cllr Yvonne Peacock

Your local North Yorkshire Councillor

Will be holding a surgery at Hudson House, Reeth

**On Monday 11th August 2025
11.00 am to 12 noon**

All welcome

REETH AND DISTRICT GAZETTE LTD

				 <p>The Buck — AT REETH —</p>	
	<p>SWALEDALE MUSEUM & SHOP est. 1974</p> <p>OPEN June to September Wednesday to Saturday 10.00 am to 5.00 pm <i>or by chance and appointment</i></p> <p>Children 12 & under FREE Adults £5 Annual Membership £10</p> <p>REETH DL11 6TX www.swaledalemuseum.org</p>			<p>Serving food between 12pm & 8pm everyday Free to join loyalty scheme <u>No Table Reservations</u> Amazon, BT Sports & Sky Sports on 3 TV's Pool Table & Dart Board Pet Friendly Monthly Quiz Occasional Live Music Warm Welcome Cask Marque accredited & CAMRA discount www.thebuckreeth.co.uk Tel 01748 884 545 Email stay@thebuckreeth.co.uk</p>	

MINERALS & FOSSILS PREHISTORIC LANDSCAPE LEAD MINING SHEEP & FARMING
STONE WALLS & BARNES TRADES & CRAFTS PEOPLE OF THE DALE DIALECT GIFTS & BOOKS

 		
<p>SALES - LETTINGS - MANAGEMENT FREE 'NO OBLIGATION' MARKET APPRAISAL AVAILABLE UPON REQUEST</p>		
<p>6 Bridge Street Bedale DL8 2AD 01677 422282</p> <p>bedale@normanfbrown.co.uk</p>	<p>14 Queens Road Richmond DL10 4AG 01748 822473/822967</p> <p>richmond@normanfbrown.co.uk</p>	<p>25 Market Place Leyburn DL8 5AS 01969 622194</p> <p>leyburn@normanfbrown.co.uk</p>
<p>www.normanfbrown.co.uk</p>		