

REETH & DISTRICT GAZETTE

ISSUE NO. 326

AUGUST 2023



*Your local news magazine
for the two dales*

PRICELESS

Melbecks Emergency Plan Update

Well, we've certainly been busy with the plan! We now have 14 brand new Motorola 'T82 Extreme' 2-way radios for the use of our Emergency Volunteers. Testing has been taking place to see just how far the signal can reach in the Dale, and we have been very pleasantly surprised! The radios are fitted with a rechargeable battery that can be removed and replaced with 3 AA batteries in under a minute, very useful during power cuts or out on operation. Training with the radios for our volunteers took place at the Low Row Institute on Tuesday 11th July, and Monday 17th July at the Gunnerside Village Hall. Apart from being used by our volunteers, radios are being permanently stationed at Blades & Crackpot and also in the villages of Low Row & Gunnerside. In addition to the radios, both the Low Row Institute and Gunnerside Village Hall now have Satellite Hubs, which, in tandem with both the halls' standby generators, can be used to send phone calls and messages during extended power cuts. The Emergency Plan itself has just been updated and accepted by the North Yorkshire Local Resilience Forum at NYCC. We are also liaising with several other Parishes to see if we can help them set up plans of their own.

So, what do our volunteers actually do? Well, they are the first eyes and ears for our emergency services. They check the access routes in and out of the dale, and report any problems they come across, along with their Grid Coordinates, back to the Emergency

Coordinator, who passes the information to the Blue Light Services. Our Volunteers check bridges, river levels, potential flooding areas, and report back to the Emergency Coordinator. This information is passed to the Council sandbag teams and the Environment Agency, so that they know exactly where to go, instead of losing valuable time waiting for calls from worried residents who are in danger of being flooded out. The Volunteers check on our vulnerable people, to ensure that they are ok and have what they need, and if necessary assist them to the Emergency Centres at the Low Row Institute and Gunnerside Village Hall, where further help can be obtained. Volunteers will also be present at the Emergency Centres to turn on the heating, start the generators, serve people with tea, coffee and something to eat, and also use the Sat Hub connections to inform relatives and friends that people are safe.

This is what the plan does. If you wish to join us as a volunteer or would like help setting up an Emergency Plan in your parish, drop us a line at riklewis@outlook.com. We will be very glad to have you on board or to offer our help!

Rik Lewis, Melbecks CEP

THE HEALING COLLECTIVE

Encouraging health and well being with a range of therapies including
* Reiki * Counselling * Bach Remedies *
* EFT (tapping) * Indian Head Massage *
Treatments for animals also available.

Coach House, Berry's Farm Shop & Café,
Swinithwaite, DL8 4UH. t.0845 474 2383
info@healingcollective.co.uk
www.healingcollective.co.uk



REETH AND DISTRICT GAZETTE LTD

Gazette Management Team

Chairman: Susan Miller

Longstone, Low Row, Richmond
DL11 6NA

Tel: 01748 886 358

E-mail: chairman@reethGazette.co.uk

Secretary: Sue Alderson

Holme View, Low Row, Richmond,
DL11 6PE

Tel: 01748 886 292

E-mail: secretary@reethGazette.co.uk

Editor: Jackie Pope

Guildy Hall, Muker, Richmond,
DL11 6QG

Tel: 07885 498676

E-mail: editor@reethGazette.co.uk

Treasurer: Andrew Bedford

Glory Be, Blades, Richmond, DL11 6PS

Tel: 01748 886 974

E-mail: treasurer@reethGazette.co.uk

Subscriptions: Elsie Whitehead

5 Place Hill, Reeth, Richmond,
DL11 6SD

Tel: 01748 884 132

E-mail: subscription@reethGazette.co.uk

Distribution: Trevor Brown

The Cottage, Healaugh, Richmond,
DL11 6UA

Tel: 01748 884 111

Published by

The Reeth & District Gazette Ltd.

Company Number: 06541854

c/o The Company Secretary

Andrew Bedford, Glory Be, Blades

Richmond, North Yorkshire DL11 6PS

Tel: 01748 886 974

E-mail: treasurer@reethGazette.co.uk

No material may be reproduced in whole or in part without permission. Whilst every care is taken for accuracy, the publishers cannot be held legally responsible for any errors or opinions in articles, listings or advertisements.

ADVERTISING

For information on advertising and prices, please contact the treasurer. Advertising copy, should be sent to the editor.

The editor reserves the right not to publish any advert or article considered to be inaccurate or misleading.

All articles or items for inclusion should be sent to the editor
E-mail: editor@reethGazette.co.uk
or left at Reeth Post Office.

The Editor welcomes feedback

At the editor's discretion, your feedback will be published with Editor responses as appropriate.

Please send feedback to
editor@reethGazette.co.uk

Gazette Deadlines

The deadlines for the next two months are:

September issue: **August 8th**
October issue: September 12th

Posting The Gazette

To post a copy of this Gazette to a friend or relative, will require a Large Letter size and will cost £1.85 second class, or £2.25 first class.

PLEASE NOTE: We will endeavour to publish all suitable items submitted by the deadline date but this cannot be guaranteed and is at the sole discretion of the editor.

REETH AND DISTRICT GAZETTE LTD

A story of remarkable endurance and determination

Some people's personal milestones make noteworthy history, and one such person must be Rowena Hutchinson, the owner and licensee of the picturesque Red Lion pub in the village of Langthwaite, in Arkengarthdale.

At the time of writing this, in June 2023, Rowena has been working at the tiny hostelry for 59 eventful years, the last 44 of them in charge, and today, despite approaching her 80th birthday in August, she has no plans to retire.

Rowena's long run has defied the steep downward trend in the traditional licensed trade, which over the last 20 years in the UK has seen up to 1,000 pubs a year closed forever. Even more impressively, she has bounced back from the catastrophic deluge in the dale in 2019, which saw Rowena's home and business flooded to a depth of four

feet; and most recently she has survived the enforced shut-downs of the Covid pandemic of 2020/21.

Despite it all, Rowena carries on. Supported by her 75-year-old sister Marguerita Barningham, Rowena has refused to call time on the Red Lion. And since neither market forces, nor flood, nor pestilence could force her out, Rowena told me: "I'll only give up when they take me out of here in a box."

Her story at the Red Lion began in 1964 when her father and mother, Danny and Margaret Winkfield, bought the pub and, along with Rowena and Marguerita, moved in from their home in Liversedge, West Yorkshire. The Winkfield family had been passionate visitors to the Dales. The new full-time adventure became possible when Danny took early retirement from his post as a primary school head teacher. Margaret gave up a small poultry farm and plant nursery, while Rowena, then aged 21, gave up her job as a



Rowena Hutchinson (left) with her sister Marguerita Barningham at the Red Lion, Langthwaite, in June 2023.

REETH AND DISTRICT GAZETTE LTD

hybridiser of roses on a large estate near Brighouse.

Margaret became the licensee. Rowena helped in the pub while also establishing a rose-growing business of her own on land in the dale. She had a field of ten thousand roses. Rowena married a local gamekeeper in 1966. Marguerita also helped her mother in the pub until she married a local farmer in 1971. Margaret was an enthusiastic student of the history of the dale. Her *Brief History of Lead Mining in Arkengarthdale* was published in 1995. She retired from running the pub in 1979, at which time Rowena gave up the rose business and took over the pub licence.

It was a particularly exciting period for everyone associated with the Red Lion. The pub had recently featured as a location in the Disney movie *Escape from the Dark* (1976) and had begun a run of appearances in the hit TV series, *All Creatures Great and Small* (1978-1990). Scenes shot inside and outside the pub brought it to much wider attention. Tourists were drawn to visit, and other film makers also came along. Notably, the Red Lion appeared in the TV serial *A Woman of Substance* (1984) and its sequel *Hold the Dream* (1986).

Film and TV fame has now largely faded away, but visitors to the Red Lion can still see photos of filming events adorning the bar walls. More importantly, it's the unfailingly cheery welcome of Rowena and Marguerita that continues to attract locals and visitors to this gem of the Dales, which is a rare survivor among the rapidly declining numbers of traditional small village inns.

Will Swales

SWALEDALE MUSEUM & SHOP

OPEN Wednesday to Saturday 10.00 am to 5.00 pm



Geoff Braithwaite Property Maintenance & Painting and Decorating

Tel: 01748 886 783

Mob: 0789 106 3546

Email:

geoff@mukerchapel.o.uk

VICTORIA COTTAGE

Lovely Period Cottage
Overlooking Reeth Green
Great Views. Sleeps 4

Email:

judy.roger@btinternet.com

Website:

www.victoriacottagereeth.com

Church and Band, hand in hand

St Mary's Church, Muker and the village Silver Band have always had close links. Chris Watts the churchwarden is a member of the band. His predecessor as churchwarden was Norman Guy, present conductor of the band and a cornetist from the age of eight. His predecessor both as conductor and church warden was Sim Raw. John Hunter, his fellow church warden, was also a longtime band member. In 1981 the Rev Hall-Carpenter, vicar at Muker, was thinking of a good way of raising funds for the church. He didn't have to look far, and the band was willing (how could they say no?!) and a new tradition was born, the Wine Party.

It hasn't changed... people sit around tables in the Public Hall chatting, even while the band is playing. Of course, there's a raffle and of course there's a slap-up Swaledale supper, with home baked pies, tarts and cakes. But instead of the usual pots of tea it's bottles of wine. Perhaps that's what makes it so popular! So get your £10 ticket, including supper and two glasses of wine, from church members or at the door. It's always on the last Friday in August, at 7.30 pm.

Sylvia Crookes

Cosy Holiday Cottage

Attached to owners' farmhouse on hill farm in Arkengarthdale. Sleeps 2. No pets. E.M. on request.

Mrs Gladys Atkinson
Tel. 01748 884550



Going above and beyond for our clients...

For more information please visit our website at:
hallandbirtles.co.uk

CONVEYANCING FAMILY MATTERS WILLS THE ELDERLY CLIENT

Hall & Birtles
-SOLICITORS-

Our services include:

- Landlord & Tenant
- Buying & Selling Property
- Wills, Trusts & Probate
- Divorce & Matrimonial Matters
- Commercial & Private Disputes
- Agricultural Matters
- Powers of Attorney

30 min FREE initial consultation

Directors: Alastair C. Birtles BA Hons | Stuart J. Hall LL.B | Deborah C. Parish LL.B

Leyburn Office
The Office, Golden Lion Yard, Leyburn,
North Yorkshire, YO25 5AS
Tel: 01969 625226
Email: leyburn@hallandbirtles.co.uk

Hawes Office
Bank Chambers, Main Street, Hawes,
North Yorkshire, LS22 3JA
Tel: 01969 667171
Email: hawes@hallandbirtles.co.uk

NORTHERN WALLS DRYSTONE WALLING & LANDSCAPING

Former National Trust
gardener with 20 years
experience
City and Guild Certificate in
Horticulture

www.northernwalls.com
Tel 0795 148 1239

Wensleydale Tournament of Song

Following our recent AGM, we have had to sadly say goodbye to two of our valued Council members.

Diana Hartley, Sponsorship Secretary, has retired after serving the Tournament for many years and her experience and ready smile will be sorely missed.

Peter Olsen, Treasurer, has had to stand down from the Council due to ongoing health issues. He has done a wonderful job in keeping the Tournament financially afloat during these last few difficult years, and we all wish him the very best.

On a happier note, the Council has been joined by two new members. Janet Sheppard, who sings with the Dales Community Pop Choir, and Vanessa Hunter, an experienced speech and drama coach who has recently settled in Swaledale.

We are all very grateful, both to our departing friends and to our new friends, for their support.

Jacqueline Wilson



M. GUY - PLUMBING

For all your plumbing requirements

AGAS & RAYBURNS SERVICED

kathrynguy@designermakersmarket.co.uk

Tel: 01748 - 825640



Visitor Centre Open Daily

Calvert's Now Open

Light bites, delicious mains, coffee & cake
NEW Cheese Bar menu - tapas style dining

1897 Coffee Shop

& dog friendly garden

Homemade soup, sandwiches & snacks, cake,
coffee & ice cream, with views over the
Dales

Cheese Experience & Pairing Room

Book online for daily demos & guided pairings.
Try our NEW Cheese Trail Quiz and have your
picture taken with Wallace and Gromit

Cheese and Gift Shop

Beautiful gifts, delicious treats &
cheese sampling

wensleydale.co.uk



NEW CAR?

We probably can - most makes.

USED CAR?

We surely can - thousands to choose
from

LCV / DOUBLE CAB?

Of course we can - new or used.

FINANCE?

We certainly can.

PCP Contract Hire

Lease Purchase

Hire Purchase

Part exchange welcome.

Jed Collins, Bridge Garage, Reeth

01748 - 884245

Service MOT Parts Tyres Bodywork

If Trees Could Talk... 7 – *Modern Times* (The last 200 years)

By the mid-nineteenth century, many of the forces that have shaped today's woodland outlook were in play.

Enclosure was replacing hedgerows with stone walls and had reduced the once widespread wood pasture to scattered remnants amongst remaining commons.

Lead mining and the increased population it supported further increased the intensity of land use while a combination of fossil fuels and improved transport had broken the traditional link between local woods and domestic heating, reducing the need for coppicing to maintain them.

Plantation became the preferred method for creating and managing woodland and continues to be so, with mixed results, in some cases importing fast-growing but non-traditional trees into the landscape.

At the same time, some non-native trees such as sycamore and horse chestnut have earned their place in the Swaledale canon and planting has re-introduced oak and added species such as beech which may be better suited to a warmer environment.

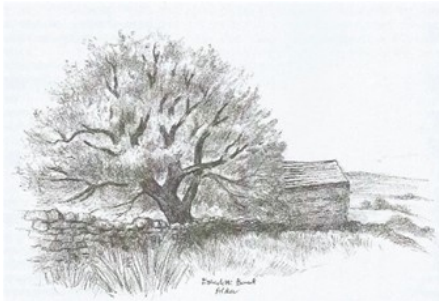


Gallows Top: Hawthorn

The number of people in Swaledale and Arkengarthdale today is less than a quarter of its nineteenth century peak. It takes time for land to reflect changing circumstances, but we've seen that for thousands of years, the structure and distribution of woods in our landscape has waxed and waned according to need.

Keeping the world fed means more woodland is now needed. Climate change has already eroded crop yields, and trees are an effective way to reduce the threat of more disruption to future food supplies and prices.

How Swaledale adapts to that future remains to be seen. There is no danger that the current interest in tree planting will turn Swaledale into an impenetrable forest devoid of open views. Even the most ambitious



Eskeleth: Alder

REETH AND DISTRICT GAZETTE LTD

proposals for the Dales would increase woodland coverage by less than three percentage points.

One possible future would see a modest amount of new wood pasture encouraged on the steeper dales' sides. Wood pasture has a claim to be as much a Swaledale tradition as barns, stone walls and sheep, and at the same time offers a very modern meeting ground of agricultural, environmental and leisure objectives - but it requires enlightened and stable policy to make it viable.



Arkengarthdale: Calver Hill from Seal Houses

Whether 'tradition' actually began with the Victorians' relatively treeless landscape or reaches deeper into our more wooded past is a matter for debate, but if this short journey through our woodland history has shown anything, it is that land use adjusts according to the demands of the time, and is dependent on the efforts and ingenuity of those who look after our treasured and beautiful dales.

Perhaps the true glory of Swaledale is its ability to retain its uniquely timeless sense of place through centuries of incessant change.

Can you help?

Do you have memories, photos or records that could add to what we know about trees and woodland in Swaledale and Arkengarthdale?

For example, the wonderful photo below is of Haverdale Woodyard (with Smarber just visible on the skyline). There's a whole story waiting to be told around this picture. Perhaps it's one you know?

Or perhaps you know something about coppicing, wood pasture or other woodland management practices with a history in our Dales.

Please get in touch with the editor or the author.

If Trees Could Talk...' written by Rob Macdonald, rob@muddhouse.uk

All drawings reproduced by kind permission of Alison Piet and Swaag, from 'Trees in the Swaledale Landscape' by Jocelyn Campbell, available from www.swaag.org

With special thanks to Helen Bainbridge and Will Swales for all your help.



Huge thanks to Rob. This has been a fascinating series of articles. Ed

Fremington Village Hall

Redecorated and now with it's own piano, the Village Hall (known locally as the Sunday School) is available to hire for all kinds of events, from regular classes, talks and community activities, to one-off functions like children's parties, lunches and dinners and special occasions such as wedding receptions and anniversary parties. The Hall has a small kitchen with electric cooker and microwave; toilet facilities including disabled toilet; and a small rear garden.

The Hall is a registered charity run by a small and dedicated volunteer committee. You can book the Hall by phoning or texting the bookings secretary **Alison Tupman** on **07967 839494** or by email at **fremingtonvillagehall@outlook.com**

Dales Reyno-Vations



General Building & Maintenance

Property renovations / Roofing

Kitchen fitting / Joinery

Bathroom suites / Tiling

Painting & Decorating

Patios / Landscaping / Ground maintenance

Free estimates / Insurance quotes

No Job too small

D Reynoldson

11, Place Hill, Reeth, Richmond
North Yorkshire, DL11 6SD

01748884309 / 07792458801

Email: david.reeth1@outlook.com



JEREMY MOON

— DECORATOR & PAPERHANGER LTD —

Established 1981

Quick turnaround for holiday homes and lettings

Fully insured

Reliable and trustworthy tradesman

High class decorating at affordable prices

References available upon request

Call Jeremy for a free quotation

T: 01748 880 155

M: 07876 764 812

Email: JEREMYLMOON@BTINTERNET.COM



Wensleydale Concert Series

It seems like only yesterday our 2023 series started but already we have passed the halfway mark. There are three concerts remaining: the next is at 7.30pm on 19th of August in St, Andrew's Church, Aysgarth with pianist Mark Bebbington and the final two are in September with cellist Moray Welsh and pianist Martin Roscoe on the 2nd and horn player Ben Goldscheider with pianist Huw Watkins on the 16th. More about the September concerts in the next issue.

Mark Bebbington is an outstanding British pianist. Internationally he is recognised as a champion of British music. Mark has recorded extensively for the Somm label to critical acclaim, with no fewer than nine of his recent CDs awarded 5* by BBC Music Magazine. Mark has toured Europe, USA, the Far East and North Africa as recitalist and with leading orchestras. In 2017 he made his Carnegie Hall debut and toured with Israel Camerata and Czech National Orchestra. In the UK, he has appeared with the London PO, Royal PO, Philharmonia, London Mozart Players, Orchestra of the Swan and BBC Concert Orchestra. He has featured on numerous BBC and major European television and radio networks. This concert is made possible with the support of The John Ireland Trust and features Ireland's wonderful work "Sarnia: An Island Sequence" as well as Beethoven's popular Appassionata Sonata and works by Haydn and Liszt.

For full programme details and further information, tickets etc. please see our website

www.wensleydaleconcertseries.co.uk.

You can also order tickets by phone via our booking agent, Ticketsource, on 0333 666 3366 (quote the date and Mark Bebbington). Tickets are £15 for adults and £1 for anyone in full time education. You can order a ticket with printed programme for £1 extra (which helps us enormously with planning how many programmes are required).

I look forward to seeing you on the 19th of August. If you have non-ticket related questions call me on 01969 663026

Carol Haynes



REETH AND DISTRICT GAZETTE LTD



August Update

The school holidays are traditionally a time when activities pause so families can enjoy time together. However, August continues to be a busy month for our team of volunteers, and we look forward to welcoming you to find out more about us and help raise funds to support our charitable work.

Strawberry Teas, Sunday 6th August from 2pm.

You are invited to join us on the lawns of Thornborough Hall on Sunday 6th August from 2pm (if the weather is unkind, we will be indoors in The Oak Room). Enjoy fresh strawberries and cream, fruit scones with jam and cream served with a pot of Yorkshire tea, coffee or soft drink. Pimms will also be served. There will be a selection of garden games, tombola and book stall. Live music will be provided by The Leyburn Jazz Collective. Free Entry - Pay what you can donations appreciated. Reserve your place at www.blueboxt.org or call Judith Clark, Chair of Trustees - 07882 331421.

Wensleydale Agricultural Show, Saturday 23rd August.

This will be the first time we have had an information stand at the Show so do pop by and say hello. We are teaming up with Leyburn Arts and Community Centre and the Wensleydale Camera

Club to provide a selection of creative arts activities for all ages to enjoy. There might even be some guest performances too. As well as finding out about our work, there will be an opportunity to purchase tickets for the Leyburn Jazz Festival and support our work by entering our Grand Prize Draw.

Coffee Morning, Thursday 31st August at Richmond Town Hall

We are hosting our second Coffee morning in Richmond. There will be books, cakes, tombola, raffle and of course a friendly welcome and plenty of chat over a cuppa. Don't forget we will also be at Leyburn Methodist Church Hall on Friday 15th September. Donations welcome. Thank you to everyone who has supported us so far during the year.

Quiz Night - Simon Eastwood will again be Quiz Master on Friday 29th September at The Aysgarth Falls Café and Gift Shop. Tickets are available now - £12 (including lasagne).

Prize Draw - Tickets for our Grand Prize Draw are available at various locations around the Dales, at our events and from our volunteers. Prizes include colour TV, bluetooth speakers, hampers and vouchers to name a few. The full list is available on our website, www.blueboxt.org. Closing date for entries is Saturday 30th September.

Wensleydale Community Arts Festival 'Thank you' is the first thing that comes to mind when we reflect on the first Community Arts Festival. Thank you to our venues and their teams for welcoming and accommodating us.

REETH AND DISTRICT GAZETTE LTD

Thank you to all our volunteers who worked tirelessly before, during and after the events to make it all happen. Thank you to our performers and exhibitors who gave their time to share their skills and creativity. Thank you to everyone who came along to watch, listen and celebrate the diverse range of creative and performance arts which takes place across the Dales. We are still preparing the full report which we will be able to share soon.

Leyburn Jazz Festival - 19th to 22nd October

Tickets are now on sale. The printed brochure is available or can be downloaded by visiting the festival website at leyburnjazz.co.uk.

The Leyburn Jazz Collective

Sessions are open to all ages to take part and enjoy making-music in a relaxed and friendly environment. **Wensleydale Community Gospel Choir** We are thrilled to welcome York City Gospel Choir who will lead two afternoon workshops on Saturday 16th September and 14th October. Participants are invited to take part in the Jazz Eucharist service and concert as part of the Festival programme.

Young People's workshops with Paul Edis.

This year, there will be two afternoon workshops held on Saturday 23rd September and 7th October. Participants will then give a performance at the Festival on 21st Oct.

To find out more or register your interest please contact **Colin Bailey** on 07711 21169 or admin@blueboxt.org



Strawberry Teas

On the lawns of Thornborough Hall
(in the Oak Room if the weather is unpleasant)
Leyburn, North Yorkshire, DL8 5AB

Sunday 6th August 2023, 2,00pm

Live music with the
Leyburn Jazz Collective

Strawberries and Cream
Homemade Scones with Jam and Cream
Served with a pot of Yorkshire Tea

Garden Games 🍓 Tombola 🍓 Book Stall

Pay what you can – Proceeds in aid of
BlueBoxt Creative and Performing Arts
Judith Clark 07822 331421
admin@blueboxt.org | www.blueboxt.org

James Peacock



Solid Fuel Merchant Bainbridge

Good quality fuels at
competitive prices.
Deliveries to Wensleydale,
Swaledale and Coverdale.
No delivery too small.

Tel. 01969 650212/650465

Email:

jamespeacock@btconnect.com
www.james-peacock.co.uk

Swaledale Memories—1

Having a free afternoon while waiting for a storm to pass, I've been enjoying an afternoon in the company of Major F T C Williams, watching a video titled 'Some Sunny Spots of Greenery'.

Memories of those wonderful talks at Fremington Sunday School just carried me back to 2000/2001.

The Major gave permission for my husband and I to record a few of his famous talks for posterity so I now have a collection of nine.

Unfortunately, my dear husband, Harry, passed away in 2010 (aged 60) so it has been difficult digging out and playing these videos but I am now finding them very comforting. It's lovely to see so many parts of the Dales which we both loved tramping around.

I've been for a walk down memory lane and enjoyed every minute. One day I might come over to see the sights on some of these videos again, but unfortunately I can only manage short walks these days.

If anyone remembers us from the 'good old days' send me an email. It would be lovely to reminisce.

harryh@harryh.karoo.co.uk

Margaret Harrison (Hull)



**Bespoke
Tutors**

**Maths, Science,
English Private
Tutors**

Gaynor Voice & Kate
Roxburgh

Brown Hill Top
Low Row
Richmond
DL11 6NB

Tel. 01748 886201

Email: bespoketutors@gmail.com

www.bespoketutors.org.uk



**All aspects of tree work carried out
by fully insured and NPTC
qualified tree surgeons.**

**Tree removal, pruning, planting,
hedging and stump grinding.**

**Contact Tom Hollingworth
07929322227**

www.arborestrees.co.uk

CHAPEL GALLERY

2023 Tuesday Workshops at Chapel Gallery Hawes

(all start 10am):

Date	What	Finish	Price
05-Sep	Needle Felted Landscape	4pm	£65
19-Sep	Garden Inspired Rag Rug Panel	4pm	£55
26-Sep	Photography (start 9am)	5pm	£65

Please contact Ellie at

info@chapelgalleryhawes.com for details and
other courses.

Or book via www.chapelgalleryhawes.com

Burtersett Road, Hawes, DL8 3NP



SALES - LETTINGS - MANAGEMENT
FREE 'NO OBLIGATION' MARKET APPRAISAL AVAILABLE
UPON REQUEST

6 Bridge Street
Bedale
DL8 2AD
01677 422282

bedale@
normanfbrown.co.uk

14 Queens Road
Richmond
DL10 4AG
01748
822473/822967

richmond@
normanfbrown.co.uk

25 Market Place
Leyburn
DL8 5AS
01969 622194

leyburn@
normanfbrown.co.uk

www.normanfbrown.co.uk



nh flooring

*The Carpet
& Flooring
Specialist*

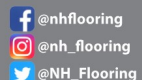
- Amtico
- Karndean
- Panaget
- Brintons
- Westex
- & more



- Carpets
- Wood Flooring
- Laminates
- Vinyl Tiles
- Vinyl Sheets
- Rugs
- Accessories

Contact us now for a **FREE** quote, advice or more information

t: 01748 822834 m: 07789 996526
e: enquiries@nhflooring.co.uk
w: www.nhflooring.co.uk



Unit 6 Borough Court, Borough Road, Gallowfields Trading Estate, Richmond. DL10 4SX

2Dales Digital

Family Business to Support
you at home



Need help or friendly advice

Call Mike & Anne on:
01748 884737

Email us at:
mikebarden@yahoo.com
See us at website:
www.2dalesdigital.co.uk

**Local Support for your
Desktop, Laptop, Tablet
& Console Issues.**

**Windows, Apple,
Android, Playstation
and Xbox Supported**

The Black Bull

Reeth's Oldest Inn, serving a range of Real Ales

Comfortable en-suite
accommodation,
Traditional Pub Fayre served daily
Sunday Carvery (booking advised),
Coaches welcome

Tel: 01748 884 213,
Email: bookings@theblackbullreeth.co.uk,
Black Bull, Reeth, DL11 6SZ,
www.theblackbullreeth.co.uk



Open Daily from 11am

Swale Singers with Muker Silver Band

The article on page 6 talks of the long and strong connection between Muker Silver Band and St Mary's Church, Muker.

Muker Silver Band has another lasting connection with The Swale Singers, a group of singing loving people who first formed a small choir in 1989, inspired by Shelagh Tomlinson and under the musical leadership of Duncan Bythell who had such strong and long connections with the Band.

Neither Shelagh nor Duncan is still with us, but both are remembered so fondly by both organisations. To celebrate their connections and contributions to the musical life of the Dales, Muker Silver Band and Swale Singers are joining together for a **memorial concert in their honour on Saturday October 7th at 7.30pm in Gunnerside Methodist Chapel.** The programme will consist of band and choral pieces much loved by Shelagh and Duncan, and the proceeds of the concert will go towards supporting the Chapel, St Mary's Muker, the Silver Band and The Swale Singers. Tickets will go on sale next month.

The Swale Singers would love to welcome back any past members of the choir who would like to join rehearsals for a few weeks with a view to participating in this special concert. Rehearsals start Sunday September 3rd at 3pm in Reeth Memorial Hall..

Jackie Pope



Imogen Hartley
Qualified MAKEUP ARTIST
(MUA Diploma)

- Bridal
- Any special occasion

07947 210904
Instagram
@thefacetobe
www.thefacetobe.co.uk

THE FACE TO BE
TFTB
MAKEUP ARTIST

Wensleydale Tree & Horticulture Services (Est. 1995)

David Allen (HND Arboriculture)
Fully Insured (£5 million)
Professional tree work: felling, crownthinning etc. to BS3998

Tel 01969 667364 Mobile: 07811 576108
E-Mail: treesinhawes@gmail.com
www.treesinwensleydale.com

ELLERTON ABBEY
ANTIQUES
&
MRS PUMPHREY'S
TEAROOM

Open Thursday, Friday and Saturday 10 - 4
Ellerton Abbey, Richmond,
North Yorkshire DL11 6AN
Tel: 01748 884321
Mobile: 07948 426099

Find us on
facebook free WiFi

REETH AND DISTRICT GAZETTE LTD



DATE FOR YOUR DIARY 'Flu Clinic 2023

We will be holding an open Flu Clinic at
Reeth Memorial Hall on:
Thursday 21st September between
09.30am - 11.30am.

Just come along, no appointment
necessary!

**Those entitled to a free NHS
vaccination in this clinic are as
follows:**

- All those **aged 65 years and over**
- Pregnant Ladies
- Registered Carers

And patients with any of the following
medical conditions:

- Chronic respiratory Disease (COPD,
asthma, etc)
- Chronic Heart Disease (e.g. heart
failure, angina)
- Chronic Liver Disease
- Chronic Neurological Disease (e.g.
Parkinson's Disease, strokes)
- Chronic Renal Disease
- Diabetes
- Immunosuppression (suppressed
immune system due to disease or
drugs)

NHS England have chosen not to offer
flu vaccines to patients aged between
50 and 64 without medical conditions
this year so please check the list above
as patients who could get a flu vaccine
from us last year might not be entitled
to one this year.

**On the day, please remember the
following:**

- Do not attend if you are feeling
unwell
- Attend ready to receive your
vaccination - wear a short-sleeve,
loose-fitting top
- Bring a bag for any coats or jumpers
as there will be nowhere to put items
down

We look forward to seeing you for your
vaccination!

The RMC team

NYCC HOME LIBRARY DELIVERY SERVICE

**We deliver books, audiobooks,
DVDs and information to the
homes of people who find it
difficult to get to their local
library.**

**If you are interested in
receiving monthly deliveries
please contact
North Yorkshire Libraries
Headquarters on
01609 533800
Or Catterick Garrison Library**

PROPERTY MAINTENANCE

General Building Work, Dry Lining,
Decorating, Electrical Work, Kitchen
Fitting, Joinery, Paving, Garden
Maintenance, Roofing, pointing &
guttering work. Small jobs welcome.
Free estimates.

Contact Martin or Django
Tel 01748 886 465 Mob: 07813 715 120
Email: martinkiss1960@gmail.com

Clarksons

MORE THAN ACCOUNTANTS

Are you looking for more from your accountant?

We believe businesses deserve more than just having their accounts and tax returns filed.

Whatever your accounting or business needs, we offer a personalised service to ensure we assist you in fulfilling your business's potential.

w: www.clarksonaccountants.co.uk e: info@clarksonaccountants.co.uk t: 01969 624999

Thornborough Hall, Leyburn, North Yorkshire, DL8 5AB

Follow Us on Twitter @ClarksonsAcct

Find Us on Facebook @ClarksonsAcct

The Bridge Inn, Grinton

Tel 01748 884224 www.bridgeinn-grinton.co.uk

Traditional coaching inn serving quality food in the restaurant and bars

Open all day. Food 12noon to 2.30pm and 5.30pm to 9.00pm



Recommended in the CAMRA and Good Pub Guides
Music night with local musicians Thursday from 9.00pm
Children and dogs welcome. En suite accommodation

Leyburn Arts and Community Centre

August can be a quiet month as lots of groups do not meet for various reasons. However, Leyburn can be busy, with tourists coming to sample our beautiful Yorkshire Dales. As we queue up or compete for parking in the Market Square, I for one, remember that I was a visitor once and loved the friendly locals, so I must smile and be sociable!

As usual, there's lots going on at the Arts Centre in August: Oklahoma, the opera Turandot, Jayne Darling Vintage Show, Andre Rieu concert, plus our regular Friday cinema. We get great pleasure if some of these visitors join us and compliment our volunteers. So, this month instead of our usual Volunteers Together Information Sharing session we are holding an Open Day, celebrating our volunteers, past, present, and hopefully prospective. We want people to come along, have a look around and see what happens in the Arts & Community Centre. So often do locals say to us 'I didn't know that' or 'I've never been in this building' and this is our chance to chat over free coffee and cake. It will be a very informal morning, with our volunteers in attendance, but NO pressure to join as a volunteer, unless of course you like what you see and hear and think you could enjoy being a part of our merry band!

Open Day, Saturday 12th Aug between 10-12, with free coffee and cake. All welcome.

As always, details on the website. or call in or contact us on 01969 624510.

Jeannie Bishop

S.J.R Plumbing Services

For all of your domestic
Plumbing requirements.

C & G/Advanced C & G Qualified
Reliable With Very Competitive Rates

Based in Reeth

01748-884036

Or 07977-297563

CHARMING OLD COTTAGE IN THE CENTRE OF REETH (sleeps 6+)

Open fire & background heating.

Fully fitted kitchen, dishwasher, fridge/
freezer.

2 bathrooms, 2 double bedrooms, 1 twin bedroom & attic play area/fourth bedroom with 3 single beds.

Private, secure, rear courtyard area.

Dogs welcome.

Contact Denyse on 01325 722786 or

e-mail denyse00@btinternet.com

www.holidaycottageswaledale.com



R.A.Lofthouse
Roofing Services
Kirkby Stephen

We SPECIALISE in traditional and modern slating and tiling

- Traditional slate specialist
- Re Roof / Repair work
- Slating, flagging & tiling
 - Lead work
- Velux replacement /installation
- Chimney repair/replacement

For a FREE quotation or any enquires please call:

Tel: 017683 48787

Mob: 07557738016

or email us on:

r.a.lofthouse@outlook.com

Asthma and Lung UK

Susan's Hula Hoop Challenge

A great big thank you to everyone who sponsored me. £1253.15 was raised to help support all those who suffer with lung conditions.

Susan Cluderay



LIBERTY
FABRIC

Quality fabrics for quilting, dressmaking, etc., sewing kits & accessories, plus wool/yarn.
Abbotstone House Collection,
Little Shop on the Hill, Hawes.
☎ 07921 058803/01969 667988




The Buck
— AT REETH —

Serving food between 12pm & 8pm everyday
Free to join loyalty scheme
No Table Reservations
Amazon, BT Sports & Sky Sports on 3 TV's
Pool Table & Dart Board
Pet Friendly
Monthly Quiz
Occasional Live Music
Warm Welcome
Cask Marque accredited & CAMRA discount
www.thebuckreeth.co.uk
Tel 01748 884 545
Email stay@thebuckreeth.co.uk



Hudson House Centre Reeth

Owned by the Community of
the Two Dales

Community

- Gallery
- Learning
- Library
- Orchard
- Transport

National Park Centre

North Yorkshire CC

Police

Richmondshire DC

Swaledale Festival

Business Forum

Hot drinks vending machine

Internet & WiFi

Local notices & information

Meeting Rooms

Tourist Information & Shop

Open all year

7 days a week

See website for times

Silver Street Craft Unit's
managed by Hudson House.

For all enquiries contact
Jill May.

01748 884485

www.hudsonhouse.info

REETH AND DISTRICT GAZETTE LTD

Low Row Institute Renovation Update

Phase 1 of the Low Row Institute renovation work is well under way, with the new external doors and windows now in place. The overhaul of the roof is scheduled for September/October, and with the fitting of new LED lighting in the Main Hall, Phase 1 will be complete.



Phase 2 starts as soon as finances allow, and will see huge changes to the main hall. The interior will be stripped out and the existing pipework and radiators replaced with energy efficient units. Whilst the walls are bare, new cabling for audio/video equipment will be installed along with a fire alarm system. Once the first fitting is completed, the walls will be insulated and dry lined, and any repairs to existing woodwork made. Purpose built storage facilities for hall users will be incorporated into the hall and Phase 2 will be completed with a full redecoration of all the main hall surfaces.

Phases 3 & 4 are still a little way off, but they will see the biggest changes to this fantastic community asset, and

at last open the Institute up fully to the disabled members of our community.

We have come a long way in a year. Community use and engagement of the hall is increasing rapidly, and a 'Friends of the Institute' group help with ideas for events and fund raising. The Committee has started a '100 Club' and so far, in just 4 weeks, we have 31 members already! There are 3, (soon to be 4) cash prizes every month, of £50, £30, £20 (and soon to come £15). If you would like to join us, speak to the Institute Secretary, Mrs Louise Waller for details; we'd love to have you on board! Help us to help your Institute be a building fit for the 21st Century, whilst at the same time keeping its traditional looks and values!

Rik Lewis

SWALECTRIX
YOUR LOCAL DALE'S ELECTRICIAN

- All Electrical Work Undertaken
- Fault Finding & Maintenance
- TV, DATA, CCTV & Networking

07400 411 411
01748 327 372

pete@swalectrix.com
Chisel Cottage,
Reeth, DL11 6TQ

www.swalectrix.com



Christian Aid

Thank you very much indeed to everyone for their support for **Christian Aid Week**. The Envelope Collection in May, the Service at Gunnerside Methodist Church together with the Produce Stall on the Green raised a total (including Gift Aid) of **£2,347**. Thank you all so much for your generosity.

Your support this Christian Aid week will help create long-term change for people living in poverty. Your gift could help famers like Jen in Malawi plant better seeds, secure a fairer price for their crops, and build happier futures for their children. Watch the new thank you film featuring Jen who shares the impact of Cyclone Freddy and why your Christian Aid Week donations and fundraising are so important. The link is here <https://youtu.be/NOqBPJpURm0>

Pauline Oldershaw
Secretary - Upper Swaledale & Arkengarthdale Christian Aid Committee

Cover photograph by Maggie Thomas:
"Reggie, Yorkshire born and bred"

Local Knowledge & Practical Advice

Your Legal Companion

- PROBATE & ADMINISTRATION
- WILLS
- AGRICULTURAL MATTERS
- POWERS OF ATTORNEY
- NURSING & RESIDENTIAL HOMES
- LAND TRANSACTIONS

Offices At: *Barnard Castle* *Haaves*

mbmcgarry.co.uk t. 01833 600 160 t. 01969 666 290
 e. office@mbmcgarry.co.uk DL12 8EQ DLS 3QS



Home Run
Pet sitting, House sitting, Dog walking

I offer a friendly, personalised pet and house sitting service in and around Swaledale.

Nicola – 07866 336924
 nicola@homerundogsitting.co.uk
 www.homerundogsitting.co.uk




KARL LONGDEN PLUMBING

Reeth, North Yorkshire
karllongdenplumbing@yahoo.com
 Tel. 01748 **889951**
 Mob. 07969 329893

24 HOUR CALL OUT SERVICE






FREE
Professional
Spot & Stain
Remover

Carpet Cleaning
Rug Cleaning
Upholstery Cleaning
Mattress Cleaning

*Proudly serving The Dales
Since 2014*

Leyburn - 01969 622620
Mobile - 07944 774947

www.ecodrycarpetcare.co.uk



Reeth Indoor Bowls

Bowling afternoons have finished for the summer, but will restart on September 13th. We meet from 3pm to 5pm at Reeth Pavilion.

We could always do with a few more members, so if anyone is interested then give me a ring on the number below or just turn up.

Nobody is an expert. We play for fun and it's a nice sociable afternoon.

Chris Porter 884684

Muriel

Would like to say many thanks to all her friends and neighbours for the cards, flowers and phone messages sent on the occasion of her 90th birthday in May.



Yorkshire Dales Accountancy
Chartered Accountants

taxation & business advisors

Providing a broad range of accountancy and taxation services across a variety of sectors, including:

- Accounts • Business Tax • Personal Tax • VAT • Payroll
- Construction Industry Scheme • Capital Gains Tax
- Inheritance Tax • Making Tax Digital

Hawes - Leyburn

2 Chapel Street, Hawes
North Yorkshire, DL8 3QG

E: info@yorkshiredalesaccountancy.co.uk
T: 01969 678128

www.yorkshiredalesaccountancy.co.uk



REETH AND DISTRICT GAZETTE LTD

FRIENDS' SCHOOL AT REETH TRUST
Charity Number 529603

Grant Applications for the Academic Year 2023-24

Small grants are available to local young people, under the age of 25, attending **full-time** further education, towards the cost of their studies. (Not transport costs).

Applications need to be received before
Monday 25th September.

For an application form, please contact:

Friends School at Reeth Trust Secretary
By e-mail to gaynorhemming@gmail.com

or by post to

Gaynor Hemming, 20 King St, Barnard Castle.
Co.Durham, DL12 8EP

The Old School Muker

Art Gallery & Craft Centre



Guning Lane, Muker, Swaledale, DL11 6QG
www.theoldschoolmuker.co.uk
Tel: 01748 886155
email: ask@theoldschoolmuker.co.uk

Are you or a loved one considering a care home?

Our stunning Nightingale Hall Care home is right on your doorstep.

Here at Wellburn Care Homes we also understand that finding the right care home for you or a loved one can be a difficult time for all sorts of reasons. But with the help of our expert staff to guide you every step of the way, we'll take all the pressure off and help you make the right choice.



Call our dedicated
New Enquiries Team
on 0191 694 1052

Discover more now at:
wellburncare.co.uk

Or call our New Care Enquiry Team:
0191 694 1052


WELLBURN
CARE HOMES

  @WellburnCare

REETH AND DISTRICT GAZETTE LTD

Church Opening Times and Services in August

6th Aug	9.15 am	St. Mary's Muker	<i>Eucharist</i>
	10.30 am	St Joseph & Francis Xavier Richmond	<i>Mass</i>
	10.30 am	Low Row URC	
	11.00 am	Holy Trinity Low Row	<i>Eucharist</i>
	11.00 am	St. Edmund's, Marske	<i>Holy Communion</i>
	11.00 am	Reeth Evangelical Congregational	
	4.00 pm	St. Andrew's Grinton	<i>Pimms and Hymns</i>
	6.30 pm	Reeth Evangelical Congregational	
13th Aug	9.30 am	St. Andrew's Grinton	<i>Eucharist</i>
	9.30 am	St Michael's Downholme	<i>Morning Prayer</i>
	10.30 am	St Joseph & Francis Xavier Richmond	<i>Mass</i>
	10.30 am	Low Row URC	
	11.00 am	Reeth Evangelical Congregational	
	11.00 am	St. Edmund's, Marske	<i>Morning Prayer</i>
	11.15 am	St. Mary's Arkengarthdale	<i>Holy Communion BCP</i>
	6.30 pm	Reeth Evangelical Congregational	
	6.30 pm	Gunnarside Methodist	<i>Holy Communion</i>

Church of England

Reverend Caroline Hewlett

Vicar of the Parish of Swaledale with Arkengarthdale

01748 884 706 carolinejhewlett19@gmail.com

Religious Society of Friends (Quakers)

Quaker House, 7 Grove Square, Leyburn every Sunday at 10.30 am

The Scout Hut, Quakers Lane, Richmond 2nd and 4th Sundays at 10.30am

www.dalesquakers.org.uk

REETH AND DISTRICT GAZETTE LTD

Church Opening Times and Services in August

20th Aug	9.15 am	St. Mary's Muker	<i>Holy Communion BCP</i>
	10.30 am	St Joseph & Francis Xavier Richmond	<i>Mass</i>
	10.30 am	Low Row URC	
	11.00 am	Reeth Evangelical Congregational	
	11.00 am	Holy Trinity Low Row	<i>Eucharist</i>
	11.00 am	St. Edmund's, Marske	<i>Holy Communion</i>
	6.30 pm	Reeth Evangelical Congregational	
27th Aug	9.30 pm	St Michael's Downholme	<i>Holy Communion</i>
	9.30 am	St. Andrew's Grinton	<i>Eucharist</i>
	10.30 am	St Joseph & Francis Xavier Richmond	<i>Mass</i>
	10.30 am	Low Row URC	
	11.00 am	Reeth Evangelical Congregational	
	11.00 am	St. Edmund's, Marske	<i>Holy Communion</i>
	11.15 am	St. Mary's Arkengarthdale	<i>Holy Communion BCP</i>
	3.00 pm	Reeth Green	<i>Songs of Praise with Reeth Band</i>
	6.30 pm	Reeth Evangelical Congregational	
	6.30 pm	Gunnarside Methodist	

<p style="text-align: center;">United Reformed Church G Edward Brown 01748 886 181 edwardbrown@f2s.com And Sue Alderson 01748 886292 Susana@swaledale.org</p>	<p style="text-align: center;">Methodist Reverend Julie Reid Minister for the Two Dales 01748 823 149 Rev.julia.reid@gmail.com</p>
<p style="text-align: center;">Reeth Evangelical Congregational Church The Revd David Levell 07582 575 815 www.reethecc.co.uk</p>	<p style="text-align: center;">Roman Catholic Fr John Bane 01748 822 175 www.stjosephsfx.co.uk</p>

Muker Parish Council Minutes of Parish Council Meeting Held May 2023

Present: Cllr Metcalfe, Cllr Porter, Cllr Reynoldson, Cllr Calvert (interim chair) presiding.

Clerk: Mr Michael Cleminson.

Apologies: Cllr Peacock.

Matters Arising:

Co-opting of new councillor. The Councillors considered Mr Mark Rukin to be a suitable candidate as councillor and unanimously approved his appointment. Mr Rukin then joined the meeting and completed the necessary documentation to be ratified by North Yorkshire Council. He remained as an observer, pending his appointment.

Election of Chairman. Cllr Metcalfe proposed Cllr Calvert as Chairman, this was seconded by Cllr Porter and unanimously agreed.

Election of Vice-Chairman. Cllr Reynoldson & Cllr Porter proposed Cllr Metcalfe as Vice-Chairman, agreed unanimously.

Election of Treasurer. Cllr Metcalfe & Cllr Porter proposed Cllr Reynoldson as Treasurer, agreed unanimously.

Angram Barns - An application for planning has been received today, see planning.

Donations of Paintings & Erection of Memorial Bench. Mr Perkins had contacted the Clerk, wishing to donate the paintings of Muker area to the Parish Council for public display. The Parish Council were of the view that the paintings would be best displayed in the Village Hall or Institute. The Clerk to make contact with the secretary and

committee of the hall and institute to see if they wish to receive them. With regard to the bench, the Council knows of no benches requiring replacement at present, and asked that Mr Perkins identifies a location for the proposed bench, so the Council can then consider it.

Dates of future meetings were discussed and the date of the next meeting was scheduled for Wednesday 28th June 2023, and future dates will be considered at the next meeting.

Emergency Plan & offer of generator. Firstly, the Council wish to thank Jackie Pope for her kind and generous offer of a generator. The Council considered Muker or Keld Village Hall as suitable locations for a generator. The Clerk to contact the secretary and committee of each venue. An Emergency Plan for the Parish was considered a good idea. The Council decided it was better if someone outside the Parish Council took the lead to develop such a plan. The Clerk to advertise and seek persons to lead and progress the plan.

Highways:

The Clerk reported that since Ian Beighton had moved to another area, no responses had been received to all outstanding matters since December 2022. The Councillors agreed that this was an unacceptable situation and there was a need to establish what progress if any, has been made on reported matters. In particular, the damage to bridges at Usha Gap and Scarr House were considered

REETH AND DISTRICT GAZETTE LTD

to be in need of urgent repair. The plastic barriers on Scarr House bridge were not considered safe. Cllr Reynoldson reported that the BT cable was not now supported due to damage of the bridge. Clerk to contact Highways and BT to report the situations, and also Cllr Peacock.

Richmondshire D.C:

Nothing to report

NYC:

Nothing to report

YDNPA

Pre-planning consultation followed by the full Planning application **R/06/270**, a revised application has been received to increase slightly the height of the mast for the proposed installation of a new mobile telephone mast at Satron. In principle, as previously the Council supports this application as any improvement to communications is seen as positive, for the community, safety and the local economy. Clerk to submit comments to planning

Planning Ref **R/06/269** - Permission for an extension of existing dwelling into adjoining former barn, to provide additional living accommodation at Kisdon Lodge, Kisdon Side Road, Keld. The applicant, Mr Neville has approached the Council, as YDNP Planning have refused the application, objecting to windows on the west elevation, and seeking that the Parish Council refer this to the YDNP Planning Committee. Cllr Metcalfe stated that historically and consistently YDNP planning oppose the installation of windows to some buildings. The Council believes that there is little likelihood of this changing and did not wish to

intervene. The Council always supports applications that ensure the development, maintenance and longevity of a building, and this still applies to Kisdon Lodge.

Planning Ref **R/06/272** - Change of Use of Barn to Camping Barn at Skeugh Head Barn, Angram. This is a retrospective application for works already completed. Cllr Porter said that the wooden outbuilding attached to the barn was not in keeping with the landscape of Swaledale. The Council has always consistently objected to the development of barns and outbuildings and do not support this application.

YLCA:

The consultation on holiday lets in rural areas was noted. The parish Council have no comments to make at this stage.

Correspondence/AOB:

Former Chair Cllr Whitehead - it was agreed that a letter of thanks would be sent to him, in acknowledgement of his outstanding and excellent service to the Parish for 50 years.

Date and Time of Next and Annual PC Meeting : 7.30pm Wednesday 28th June 2023 at Muker Village Hall.

YORKSHIRE FOOT CLINICS

Podiatry/Chiropody
Alex Kravchenko MChS, BSc Pod (Hons)
Nail cutting, callus, corns &
ingrowing nails

All treated in the comfort of your home

**Tel. Richmond 850020
Or Hawes 667449**

Always insist on state registered

Keld Resource Centre Forthcoming Events

6th August: Exploring Swinnergill & Arngill 10.30am - 14.30pm

A scenic circular walk led by Chris Pearson, whose family farmed on the land for many years, covering lead mining and farming traditions of the upper dale. Meet outside Keld Resource Centre. Charge £7 pp

17th Sept. An Afternoon with Bob Guy 14.00pm - 16.00pm: Keld Old School

Informal public talk with life-long Swaledale resident Bob Guy remembering his early years farming on Oxnop and his years as a builder in the dale. An open question and answer session will follow. Charge £7 pp. Afternoon teas will be served afterwards for donations to KRC.

8th October: Upper Dales Mining Methods & Mechanisation in Swaledale 1500 - 1900's; 16.00pm - 18.00pm: Reeth Memorial Hall

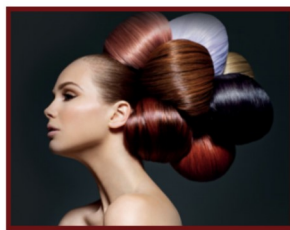
Public talk by Dave Carlisle, assisted by Peter Roe, on the evolution of underground mining equipment and techniques, and improvements in the ore treatment methods including the extraction and use of other minerals found in the area. Charge £10 pp

**12th Nov: Lichens of Upper Swaledale 13.00 pm - 16.00 pm
Approx 1 mile**

Led by Sue & Les Knight, includes introductory session in the visitor centre and local walk to identify and study specimens. Meet at Keld Resource Centre. Charge £7 pp

Full details and tickets available via Eventbrite, or Email

helenguy47@gmail.com



Sarah Louise Olney

Mobile Hairdressing

Facials

Massage

Reflexology

Indian Head Massage

Cruelty free products

Cruelty free hair colour

Reeth 07875 926946

OPEN ALL YEAR ROUND, EVERYDAY

SWALEDALE WOOLLENS

MUKER-IN-SWALEDALE, RICHMOND
NORTH YORKSHIRE



Celebrating 40 Years

The Quality is Legendary...
...The Choice is Endless.

**TAKE HOME A PIECE
OF THE DALES**

**Call into our shop in
Muker Upper
Swaledale and see
what unique garments
we have on display
from hand knit
cardigans, sweaters,
hats, scarves & gloves
to machine knit
sweaters & cardigans
for both ladies &
gents. We also stock
sheepskin rugs,
slippers & gloves.
WE ARE OPEN
EVERYDAY
Tel. 01748 886251**

Email: mail@swaledalewoollens.co.uk
or visit our website where you can order online:
www.swaledalewoollens.co.uk

Property Maintenance & General Building

Building work & property maintenance undertaken

Plumbing, tiling, plastering

Kitchen & bathroom fitting

Joinery works

Small jobs welcome

Free No Obligation estimates

Also detail plans prepared for planning applications

Contact Gary

Tel. 01748 886691 / Mob. 07896 147207

E-mail Swaddyman@gmail.com

A. HOWARD JOINERY

no job too small

01748 884045

andrewhowardjoinery@gmail.com

Rose Cottage

Just off the village green in Reeth

Sleeps 4

Dogs welcome

Tel 01964 562239

Email: rosecottagereeth@gmail.com

Orchard Caravan Park

Idyllic setting in the market town of Reeth, nestled next to the river Swale in the heart of beautiful Swaledale.

Orchard Caravan and Camping Park is the ideal location for a tranquil and relaxing break, or for those who seek an active holiday to enjoy walking and biking.

Static Caravan Hire

Camping pod hire

Touring, motorhome & Camping welcome

Email: Office@Orchardcaravanpark.com

Facebook: @Orchardcaravanparkreeth



YOUR LOCAL TRADITIONAL

CHIMNEY SWEEP

NACS & HETAS qualified & registered

We set ourselves very high standards and take every care in your home

We offer a comprehensive service

All types of chimneys swept to relevant BS Std.

Bird guards & cowls, etc. supplied & fitted

Advice freely given, problems solved

Carbon monoxide detectors

Chimney pots replaced

01765 688078

www.sweepinthe dales.co.uk

Stove Refurbishment

Stove servicing and repair

Solid fuel stove installations

Stainless steel flexible linings

Stainless steel rigid flue systems

Only high quality components are used

HETAS qualified & registered installer

STOVE INSTALLATION





Talking Pictures

Indiana Jones and the Dial of Destiny (2023)

Review by John Hunter

The great film critic John Brosnan once wrote a column called 'It's only a movie', so I feel it a little portentous to say I actually felt rather excited to be settling down in the Empire 'Impact' screen to see one of the debut showings of the latest 'Indiana Jones' movie. Here was one of the late 20th century's favourite actors playing one of his most iconic roles in a film series that has run for most of my adult film-



going life. Originally created from the dual stables of giants George Lucas and Steven Spielberg (still involved here), with visuals from Lucas's groundbreaking ILM unit, and surely one of the last great symphonic scores from the maestro himself, John Williams. These guys have thrilled me, *and* the world's cinema-going public for over half a century! Was I disappointed? - absolutely not. Whether to your taste or not, this is high quality film making which

deserves to be seen on the biggest screen possible! An extended opening sequence (almost half an hour) throws us back to the war with Indy once against fighting the Nazis and searching for the eponymous 'Dial of Destiny' (an Archimedian device which basically permits time-travel). Harrison Ford is very effectively digitally 'de-aged' in these scenes and looks pretty much like he did wearing a German uniform in both 'Lost Ark' and 'Last Crusade'. Cleverly, we then jump

forward to late 90's New York, where a crumbled, very 80-year-old looking Indy sips a wake-up whisky in his boxer shorts! Now an ageing lecturer, a visit from his God Daughter (an excellent Phoebe Waller-Bridge, who is hardly off the screen for the rest of the film)

leads to an impressive and exciting (if a little improbable) chase through New York streets (and underground) during a ticker-tape parade for the recent Apollo moon landing - on foot, motorcycles and even horseback! It transpires the nasty Nazi scientist Indy assumed had perished atop that moving train in the war actually survived and went on to help the US 'win' the space race - and is now searching once more for the 'Dial' -

REETH AND DISTRICT GAZETTE LTD

("...I've conquered space, now I want to control time..") The ever-reliable Mads Mikkelsen has a ball playing this evil nemesis, and with his band of henchman races around the globe to achieve his aim, closely followed by Indy, his God-daughter and a few new (Antonio Banderas - an ace Greek diver) and old (John Rhys Davies once again returning as 'Salah' from the original film) friends.

Intrigue and action scenes come thick and fast before the finale, which has divided critics somewhat. Let's just say I went along for the ride and felt that the 'fantasy / sci- fi' element was no more intrusive than the holy grail in the third film, or the bad guys being blitzed by 'ghosts' from out of the lost ark in the original.

A very fitting farewell to a much-loved cinematic icon.

T.A.R.Longstaff

Mobile Hydraulic hose repairs in Reeth and surrounding areas, anywhere anytime.

Also mobile on site welding.

**Tel Percy on
07889725349.**

3D Cross-Stitch



The Nutmeg Gallery

Dozens of models on display together with kits, accessories and the full range of DMC stranded cotton. Normally open Mon-Fri, and Saturday afternoon.

Reeth Dales Centre, Off Silver Street,
Reeth, DL11 6SP, 01748 884926



www.3dcrossstitch.co.uk

St MARY'S CHURCH MUKER

WINE PARTY

WITH

MUKER SILVER BAND

IN

MUKER PUBLIC HALL

ON

FRIDAY 25th AUGUST 2023

AT

7 – 30 pm

Tickets £10 Including Supper
and 2 Glasses of Wine

TICKETS AVAILABLE FROM
CHURCH MEMBERS

OR

AT THE DOOR

REETH AND DISTRICT GAZETTE LTD



Join us for
A French Evening
Friday 11th August 7pm
Memorial Hall Reeth
hosted by Friends of Marrick



A menu of delicious French foods, live music, raffle
Bring a Bottle

Tickets £15 per person from Reeth Post Office or phone
Judith on 826793

Hudson House

Your valuable community asset
Rooms for hire

Suitable for meetings, lectures, talks,
training or social events.

The Meeting Room - maximum of 30
people.

The Meeting Place (evenings only) -
maximum of 10 people.

Access to PCs, Internet, printer, photo-
copier, laminator and kitchen facilities.

The Orchard Gallery for hire

Suitable for exhibitions of paintings,
photographs and other artwork.

Own entrance through the garden.

Sales can be handled for you.

For prices (special rates for community use),
bookings or more information please
contact Jill May on 01748 884 485 or
admin@hudsonhouse.info

J. N. & E.
Capstick

INSURANCE CONSULTANTS

*A local company small enough to care, but big enough to
compete*

FARM - COMMERCIAL - HOME - MOTOR INSURANCES

Kirkby Stephen 017683 72285 - Sedbergh 015396 20124

Email: sales@capstickinsurance.co.uk

www.capstickinsurance.co.uk

WINNER
CIR **COMMERCIAL
INSURANCE
AWARDS 2017**
BROKER CLAIMS TEAM
OF THE YEAR

50 YEARS
IN A.C.
Capstick
INSURANCE CONSULTANTS
TRADING FROM 1968 TO 2018

J N & E Capstick Insurance Consultants are authorised and regulated by the
Financial Conduct Authority



ANDY MALTON LTD – DALES GENERAL BUILDING CONTRACTOR



Dry lining/ plastering/ ceiling work

Roofing/ pointing/ guttering work

Most building repair work carried out

Free estimates - No job too small

01969 624979 / 07837645104

andymalton56@gmail.com



Investing in Rights of Way “Money Well Spent”

A detailed annual report on rights of way work in the Yorkshire Dales National Park, which costs more than £1 million a year, was published in June. The report reveals that 91% of the 2,637 kilometre-long rights of way network in the National Park is 'easy to use', owing to surfaces, stiles and signposting being kept in good condition.

During 2022/23, a total of 994 improvements were made to rights of way infrastructure, while 53 river crossings and 3 sets of stepping stones were maintained or replaced.

Volunteers boosted the eight-strong ranger staff working on rights of way maintenance by giving a total of 1,256 days of practical work. Volunteers also walked over and surveyed every metre of the network, equating to a further 514 days of work.

In addition the National Park Authority remained the 'lead partner' for the group of local authorities managing the Pennine Way and Pennine Bridleway national trails.

At the last full Authority meeting in March, it was made clear that responsibility for maintaining rights of way in the National Park could be handed back to North Yorkshire Council, Westmorland and Furness Council and Lancashire County Council - owing to pressure on the National Park Authority's budget.

Neil Heseltine, Chair of the Yorkshire Dales National Park Authority, said: "Having 91% of our rights of way in the National Park now 'easy to use' is a significant achievement and my

thanks go to our staff and volunteers who work tirelessly to keep these ways in good condition.

"The National Park Authority's core grant from government is now less than it was in 2010. This very real pressure on the Authority's budget strengthens the case for local councils to find funding to support us in maintaining rights of way in the National Park to these high standards. As the annual report makes clear, it's money well spent. The service we provide on rights of way is excellent value for money.

"Decision makers should keep in mind that easy to use and well-maintained rights of way are good for the local economy. Our 2022 visitor survey showed that approximately two out of every three visitors to the National Park go for a walk of an hour or more during their visit."

To find out more about the Yorkshire Dales National Park Management Plan, visit www.yorkshiredales.org.uk/about/national-park-management-plan/



YORKSHIRE DALES
National Park Authority

PRELOVED
THE JOY OF SECOND HAND



at

Gunnerside Village Hall

On Saturday 2nd September

11am-4pm

£1 entry

Refreshments available

All proceeds to Gunnerside Village and other local organisations



Sustainable
Swaledale

Sustainable Swaledale

Natural regeneration as a cheaper alternative to tree planting

Article about what happened to a field at Monks Wood near Huntingdon which was **left to go wild 60 years ago**. A thicket of bramble and hawthorn established itself early on which protected oak, ash and field maple seedlings from rabbit and deer damage. These trees have grown to mature woodland, adapted to local conditions, without the need to bring in trees from elsewhere or using plastic tree guards. An ample nearby source of native trees is needed to provide seeds.

Source: East Anglia Bylines
<https://tinyurl.com/5n74sth>

North Yorkshire County Council to oversee a Local Nature Recovery Strategy

North Yorkshire County Council will be responsible for a **Local Nature Recovery Strategy (LNRS)** across the Yorkshire Dales and North York Moors National Parks, 3 AOBs and York. The Council will agree priorities, map the existing areas that support nature and create or improve habitats and meet wider environmental goals. It is expected that the strategy will include the creation of more wildflower meadows, tree planting, peatland restoration and wetland creation.

North Yorkshire Council's executive

member for climate change, Cllr Greg White, has said: "Key to achieving this will be creating genuine local collaboration with a partnership of organisations and individuals so we will be working with our national park authorities, AONB partnerships, town and parish councils, community groups, local landowners and farmers to ensure we create a thorough plan for our county and address its needs to direct our future policies and ambitions". Source: Harrogate Informer <https://tinyurl.com/4zwrphnz>

Save our Swale

A campaigning group, **Save our Swale (SOS)**, has been established to lobby for better water quality in the Swale. The group, composed of volunteers concerned about the ongoing pollution of the Swale, has a Facebook page: <https://www.facebook.com/SaveOurSwale> and twitterlink: #saveourswale

Sustainable: What's In a Word?

Thank you to everyone who helped with and generously supported the **Sustainable Swaledale/Joan and Gavin Graveson lecture** at the Low Row and Feetham Institute 1st July. The evening started with a YDNPA film on the farming year featuring Coverdale farmers followed by Sandy Irvine, environmental blogger, addressing what sustainable or rather unsustainable means. Refreshments, blind auction and raffle raised over £700 to support the group's projects.

World records hottest days ever

July saw the **world's average temperature reach new highs** as a result of a combination of human-

REETH AND DISTRICT GAZETTE LTD

induced climate change and the naturally-occurring weather pattern known as El Niño (which is going to be stronger next year). June was the hottest June on record, according to the EU's climate monitoring service Copernicus. The Environment Agency received more reports of dead fish in June than the same time last year, generally attributed to low oxygen levels as river levels drop. Sea water temperatures are also 3 to 4C above average for the time of the year according to ESA/Met Office. The sea is particularly warm off the east coast (Durham to Aberdeen).

The Wildlife Trusts advise that you can help wildlife by putting out a saucer of water and leave some grass long to provide habitat.

Source: BBC news

Source: Richmondshire Today <https://tinyurl.com/8cnu8vf3>

Clickable links available via the Sustainable Swaledale website

Margaret

Sustainable Swaledale Group

Find out more and join in:

Meeting: first Thursday of the month at 7pm. Please contact us for venue details.

Email: info@sustainableswaledale.org

Phone: the Secretary on 01748 886 381

Facebook Group:

Sustainable Swaledale

Website: www.sustainableswaledale.org

where you can sign up to our free newsletters, and choose to support us as a member for £10 (£5 concessions)

Yorkshire Dales Bird of Prey Partnership criticised

The RSPB has withdrawn from the Yorkshires Dales Bird of Prey Partnership which aims to address the fact that the Yorkshire Dales is **one of the worst locations for bird of prey persecution**. The RSPB argues that the partnership is failing to address the RSPB's ambitions to increase bird of prey populations. Concerns have also been expressed over Natural England's leadership of the Yorkshire Dales Bird of Prey Partnership by the Yorkshire Dales National Park Authority with Mark Corner, the authority's natural environment champion, believing that progress on tackling wildlife crime has been overstated and the partnership was "ineffective" and "poorly led" by Natural England.



Reeth Memorial Hall

Saturday 5th August - Duncan Chisholm & Hamish Napier - One of Scotland's most recognised and accomplished fiddlers and composers joins multi-instrumentalist, vocalist and composer. Music inspired by Highland landscapes and heritage. Tickets **£17** (£19 door).

Friday 25th August - Bob Fox - North-east singer and musician, Bob Fox was the Songman in the National Theatre's production of WarHorse and is also a member of The Pitmen Poets. Tickets **£15** (£17 door)

Saturday 9th Sept - Chris Wood - Singer songwriter, guitarist and winner of 6 BBC Folk Awards, "He's good, quite probably the very best we have today, and we need him more than ever" (fRoots Magazine). Tickets **£16** (£18 door).

Saturday 30th September - Megson - Comprising Debs (vocals, whistle, piano accordion) and Stu Hanna (guitar, mandola, banjo). Megson have been described by The Guardian as "the most original duo on the British folk scene." Tickets **£15** (£17 door).

Tickets from Reeth PO or phone John Little (01748 884759) or visit www.reethmemorialhall.co.uk - tickets ½ price u16s. All concerts 8pm.

M.W Waste Services

Environmental & Drainage Specialists

Septic Tanks Emptied & Cleaned
Blocked Drains Cleared Fast
Grease Traps & Interceptors Emptied
Soakaways Rebuilt & Repaired
Gully Emptying & Street Cleaning
Refuse Collection
Septic Tanks Installed
High Pressure Drain Jetting
Mobile Steam Cleaning
Sewage Plant Maintainace
Industrial & Domestic Work Carried Out

Low Hang Bank Depot
Melsonby
Richmond
North Yorkshire
DL10 5NQ
Tel: 01325 377860/377850
24/7 Call Out
[Http://www.mwwaste.co.uk](http://www.mwwaste.co.uk)

Clear Your Blocked Drains Fast With Our High Pressure Jetter
Free Quotes & Estimates

VICTORIA DESIGN GROUP LTD
Consulting Civil & Structural Engineers

Consulting Structural & Civil Engineers

Structural Surveys
All design work undertaken
whether domestic or commercial,
large or small

Telephone: 01748 886717
Email: office@vdg.co.uk
Website : vdg.co.uk



PEST CONTROL

Don't let pests become a problem, call us right away for a professional, reliable and discreet service.

- Rats / Mice
- Wasps / Insects
- Nuisance birds



SCAN ME

07818 836527

www.yorkshiredalespestcontrol.com



Marrick Priory
Outdoor Educational and Residential Centre

Enhancing life skills through adventure

Cook Required

At Marrick Priory near Reeth

Shift pattern - morning 8am till 1pm or evening 4pm till 8pm

To provide a cooked breakfast, packed lunches and evening meals for residential groups

Additional cleaning duties may be available

Good rates of pay, meals provided and excellent working conditions..

Own transport is necessary

Please contact the Head of Centre or a member of the team on 01748 884434 or email office@marrickpriory.co.uk

***For Fun &
Adventure***



***Make new friends
Learn new skills***

COME & JOIN OUR LEADERSHIP TEAM

We are looking for a Beaver Scout Leader & Assistant Leader. Beaver Scouts are aged 6-8

We would welcome a further Assistant Cub Scout Leader. Cub Scouts are aged 8-10.5

We would welcome a further Assistant Scout Leader. Scouts are aged 10.5 -14

All sections are open to both girls and boys.

Full training is given to Leaders and a uniform is provided.

Being involved as an adult in Scouting is great fun and very rewarding.

Find out more contact Paul Roger on 0786 6532137

Website: www.swaledalescouts.org.uk www.richmondshirescouts.org national website. www.scouts.org.uk

REETH AND DISTRICT GAZETTE LTD

Update from St Andrew's, Grinton

Thank you for all those who supported the Heritage and Skills day last month. It was a successful and busy day for all the crafters and Tower tour leaders. We are now looking forward to our events in August and September so please do come and support these too.

Hymns and Pimms will be held at St Andrew's on **Sunday 6th August at 4pm**. Please feel free to bring your own picnic as we hope to hold this event outdoors if the weather is kind. Pimms will be served following the service. The theme this year is 'Top of the Pops' so all the hymns chosen will be well known to you. Do come along - you will be made very welcome. Non singing dogs also welcome too!

Lakes Gospel Choir Concert with Afternoon Tea - Saturday 30th September at 4pm. We are **delighted to announce** that the Lakes Gospel Choir will be singing at this afternoon event which will also be the launch event for Pink October fundraising taking place in Reeth and Grinton. Tickets only £10/Children free, to include a pink themed afternoon tea in the interval, are now available from local outlets or by ringing 01748 884366 to reserve your tickets. Profits from the concert will be shared between CRUK for breast cancer research and for the upkeep of St Andrew's. Do come and encourage others to come with you - it will be a wonderfully uplifting afternoon with tea to enjoy - what's not to like? Get your tickets now!

Bric a Brac stall will be held for St Andrew's on **Friday 25th August on Reeth green** starting at around 9am. Do come along and bring and buy at this event in aid of St Andrew's.

Conservation Group meetings continue with the next meetings taking place between 10 and noon on Saturday 5th August and Saturday 2nd September. Do come along and we will give you a job and a fresh scone or two as a bonus.

Bat Counts also continue at church at dusk on Weds 2nd August at 21.05 and September 6th at 19.46 A free event so do come along and see them emerge from the building. Great fun for younger people if they are allowed up that late!

A thank you in advance from church wardens: **Paul and Susan** for your support of these events. Please see the parish website or church noticeboard for further details of any of these events.
<https://swaledalearkengarthdaleparish.org.uk>

R.L.G 

Property Services

- Paving • Groundworks • Decorating
- Pressure Washing • Garden Maintenance
- General Repairs & Improvements 

0737 607 3816
01748 884 321
Email: Ryang2190@gmail.com

The Gazette is online:
www.2dales.org.uk



two dales bakery
reeth

ARTISAN BAKERY & CAFÉ

Delicious breads and pastries
Food served all day including vegetarian/vegan options
Well behaved dogs welcome
Visit us at the Reeth Dales Centre,
Silver Street, Reeth,
North Yorkshire, DL11 6SP
Please see our website
for current opening times
www.twodalesbakery.co.uk
☎ 01748 905001

Support the Reeth & District Gazette

Order your printing from us and we will credit 10% of the value of your order to the Gazette account at no extra cost to you!

Quote Gazette when ordering

Booklet Printing

- ✓ Reports
- ✓ Manuals
- ✓ Brochures
- ✓ Catalogues
- ✓ Newsletters



Saddle Stitched - Perfect Bound - Wire Bound

From your computer files or hard copy

THE OLD TEMPERANCE BOOKSHOP

Reeth, Richmond, DL11 6TE
Tel. 01748 884185

Christian books & cards, Fairtrade crafts and food



Beside the village green in Reeth, we are 50 yards up from Reeth Evangelical Congregational Church

Opening times:
1.30pm - 4.00pm Thurs, Sat
10.30am - 4.00pm Fri

NCR set Printing

- ✓ Invoices
- ✓ Estimates
- ✓ Order Forms



Fast Turnaround - Padded - Loose Sets



Reflections PhotoGraphic Services

Tel: 01833 690733
www.refprint.co.uk
email: sales@refprint.co.uk

SWALEDALE

'POTTING ON THE NEXT GENERATION IN THE TWO DALES'



PLAYGROUP

Find us on Facebook – Search Seedlings Reeth

REGISTERED CHARITY No- 1045715

Swaledale Seedlings playgroup

'Stay and Play' Sessions

Mondays at Gunnerside Village Hall
& Thursdays at Reeth Memorial Hall
9.30am until 11:25am

Open to all children under the age of 5

£2 per child per session

Pop into a session or message us on Facebook
for further information

STURDY TRAVEL

INDEPENDENT TRAVEL SPECIALISTS

Now at 1 Golden Lion Yard
Market Place, Leyburn DL8 5AS
For all your travel needs, home and abroad

Call: 01677 422826

Email: robert@bakewelltravel.co.uk



Part of Bakewell Travel



Remedial Massage

*musculoskeletal conditions & injuries,
headaches, stress and anxiety*

Manual Lymphatic Drainage

lymphoedema, post-surgery

Jennifer Thursfield NAMMT
MLDUK CNHC
Tel: 07889 546608 • Based in Richmond
jtremedialmassage@gmail.com
www.jtremedialmassage.co.uk

HARKERS COACHES



Hill Top Garage, Reeth

Tele: 01748 884533

Pauls Mob: 07703 559959

**COACH,
PRIVATE
HIRE &
GARAGE**

Coach, Mini Bus and
private taxi hire
General vehicle
maintenance
including services,
tyre supply, fitting
and balancing.

Dales Police Crime Bulletin



Monthly Report June 11th - July 10th

We do not report crimes whereby victims could be identified, for example Domestic Violence or harassment, although they are included in the totals below.

Crime of note; overnight 13th - 14th June persons used a stone to break a display window in Hawes and stole a 1970 blue Raleigh Chopper Bike.

8 - Road related offences (reports of possible OPL or manner of driving).

5 - Anti Social Behaviour (Nuisance).

3 - ASB 9personal).

32 - Abandoned calls (miss-dials).

13 - Road Traffic collisions (minor).

14 - Suspicious circumstances (door to door sellers/suspicious vehicles).

1 - Crime related incident.

9 - Violence (includes dog bites).

1 - Criminal damage.

1 - Burglary.

4 - Theft.

3 - -Fraud. (Amazon, Sky and calls stating suspicious activity on bank accounts attempting to obtain banking details).

Members of the team will over the coming month be attending as many Parish and town council meetings, duties permitting. We will also be attending local community groups for a chat and provide advice on any security or other issues raised.

Don't forget, if you haven't already, to sign up to North Yorkshire Community

messaging. To sign up please visit

<https://>

www.northyorkshirecommunitymessagi

ng.co.uk. You can also catch up on the

North Yorkshire Police Face book site.

PCSO Don Watson

PC355 Heather Campbell

PCSO 5777 Sharon Diamond

PCSO 5550 Tracie Taylor-Page

Notice

THE CHARLES ALDERSON TRUST

The above Trust was established, in memory of Charles Alderson, for the purpose of relieving, in cases of need, persons resident in the former Rural District Of Reeth (the parishes of Arkengarthdale, Ellerton Abbey, Fremington, Grinton, Marrick, Melbecks, Muker and Reeth) who are sick, convalescent, disabled, handicapped or infirm, by providing or paying for items, services or facilities which are calculated to alleviate the suffering or assist recovery of such persons, in such cases where help is not readily available to them from other sources.

**Applications for assistance should be made in writing to
The Clerk to the Trust,
Mrs C Steward,
2 Hillary Terrace, Reeth, Richmond,
North Yorks, DL11 6TG**

**Music Tuition for all ages with
www.colinbaileymusic.co.uk
07711 211169**

**Drums & Percussion; Vocals;
Piano & Keyboards; Music Theory;
'Get Musical' Workshops.**

REETH AND DISTRICT GAZETTE LTD



**SWALEDALE
MOUNTAIN
RESCUE
TEAM**



search dogs, Cave Rescue Organisation Scarborough and Ryedale Mountain Rescue Team and RAF Leeming MRT.

**In an emergency DIAL 999 ask for the POLICE then
Mountain Rescue / Cave Rescue /
Mine Rescue / Flood Rescue**

Charity Commission Registration No: 1201870, providing Mountain and Cave Rescue in the Northern Yorkshire Dales

The team is made up of highly trained volunteers available, 24/7 in any weather, any time.

**Mountain and Cave Rescue Team
Incidents June 9th to 9th July
4 Incidents this edition**

**On average we respond to between
40 to 50 calls each year.**

05/07/2023: Stand by call to assist the Upper [Wharfedale Fell Rescue Association \(UWFRA\)](#) with a cave rescue.. Fortunately, due to the nature of the job we weren't required.

Incident 21:
20/06/2023: Called to assist Upper Wharfedale Fell Rescue with an ongoing missing person search, alongside our 2

Incident 20: 10/06/2023: Just as we'd got back home from the Swaledale Marathon we were called by the Ambulance Service to rescue a collapsed person in a remote field near Ravensworth, ambulance services were stretched, team on scene very quickly with a quick evacuation.

Incident 19: 10/06/2023: The team provided safety cover for the annual Swaledale Marathon, we've had snow and rain and everything in between over the years, today it's looking like a scorcher. Plenty of heat related casualties dealt with.

MRT Neck Tube, 2023 New design. Charity Fundraiser for SMRT. Or drop us a message via our Facebook page, email us at secretary@swaledalemrt.org.uk, or use our online contact form on the website, swaledalemrt.org.uk



Leyburn u3a Group
August Meeting

The next meeting is on Friday August 18th - Battle of Britain in the North East - Dennis Fox

Doors open at 10.00am at the Leyburn Arts & Community Centre, Richmond Road, Leyburn. DL8 5DL. Talk starts 10.30am.

Meetings are held the third Friday of every month. Visitors and new members always welcome. Annual Membership is just £12 or £20 for two people at the same address. For details contact Sue Mellish on 01748 850 471 or email susiemellish@gmail.com

Future Meetings: To be confirmed.



R. & W. GIBSON & SON Ltd.

**CERAMIC WALL
& FLOOR TILERS**

SHOWROOM NOW OPEN

Monday - Friday: 9.00am - 4.30pm

Saturday: 10.00am - 1.00pm

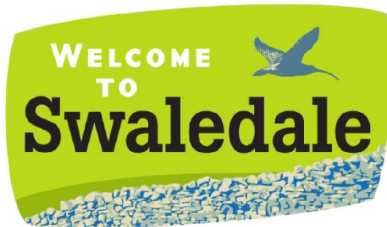
(or by appointment)

**At Borough Road,
Gallowfields Trading Estate
DL10 4SX**

Tel. 01748 - 822682 (Home)

Tel. 01748 - 821909 (Showroom)

"We cover the Dales"



S A B F

**Swaledale & Arkengarthdale
Business Forum**

**Members, get assistance to
enhance or update your entry**

**Non-Members, send your
details for a basic entry**

**visit our website
www.swaledale.net**

**Packed with useful information for
visitors and locals alike, including
a comprehensive services directory**

Martyn Leaver

Dry Stone Waller

- Farm or domestic work
- Drystone or facewalling
- Fence repairs and paving
- Misc jobs etc

**Thwaite 01748 886025
Mob: 07971 456 043**

Hindsight

Accountants LLP

Tony Fava

- Bookkeeping, Payroll and VAT Returns
 - Annual accounts and tax returns
 - Company Formations

11 Finkle Street, Richmond, DL10 4QA

Tel: 01748 822049

Email: tonyfava@hindsightaccountants.co.uk

Shaping our Rivers

People's views sought on shaping the future project priorities that will help create and maintain healthy Yorkshire rivers

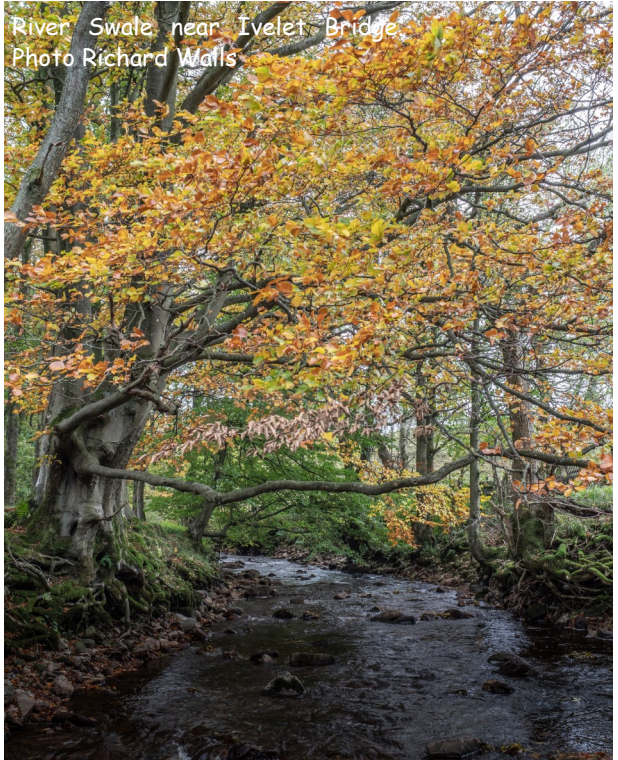
A network which is striving to protect the health of rivers in North Yorkshire is asking for the public's help in setting the future priorities and projects that are needed along seven watercourses and across their respective catchments.

The Dales to Vale River Network (DVRN), a partnership of organisations, interest groups, farmers and charities hosted by the Yorkshire Dales Rivers Trust, is setting its future strategy and is keen to hear what people consider are the priority issues along the catchments of the rivers Nidd, Ouse, Wharfe, Swale, Ure, Wiske and Foss.

To help, the DVRN has created a Catchment Management Aspirations Pack with background information on the network and each of the rivers, including the river's characteristics, species of interest, issues identified in previous consultations and the existing list of top priority projects. There is then a link to a questionnaire for each of the river catchments that people can fill in online.

Charlotte Simons, senior catchment partnerships manager for the DVRN explains: "We're keen to hear how people see the rivers, what issues they are concerned about and what improvements they would like to see within the seven catchment areas. We will use their information to form the priorities for action along each river. We want to have a strategic approach to projects that delivers benefits to the public, the rivers, and the ecosystems that depend on these watercourses.

"The network represents a broad spectrum of interests and organisations that share the vision of making our rivers more resilient and



River Swale, near Ivelet Bridge.
Photo Richard Wallis

REETH AND DISTRICT GAZETTE LTD

belief that by working together rather than independently we can achieve so much more. Each summary sheet includes existing project priorities such as pollution, flood management and habitat restoration but the input of the general public is vital as their knowledge of a particular river helps us identify new, as well as existing, issues and form the projects that are needed to address them."

Anybody interested in contributing their views has until 8th September to fill in the questionnaire. For more information including links to the individual river questionnaires go to [Aspirations - Dales to Vale Rivers Network \(dvrn.org.uk\)](http://Aspirations - Dales to Vale Rivers Network (dvrn.org.uk))

Amanda Brown

D. J. OLNEY

Painter & Decorator

Interior & Exterior

Call

01748 825472 or

07801 026 006

Gunnerside Chapel News

The 2023 Longest Day / Midsummer service was held in the Chapel on the 2nd July - (which is actually neither the longest day nor midsummer day, but that's tradition for you).

Approximately 70 people attended, and the singing was assisted by the Gunnerside "volunteer" scratch choir, with the service proper being preceded by a half hour of old Methodist hymns, the singing of which was led by Andy Souter. The service itself was then conducted by Phil Dewes who delivered a sermon of which John Wesley would probably have approved. There followed the usual tea / supper, which was much appreciated by all present - (there weren't quite 12 baskets of leftovers).

Advance Notice:

On Saturday 7th October the Muker Silver Band and the Swale Singers will be performing a memorial concert in the Chapel in memory of Shelagh Thomlinson and Duncan Bythell. All are welcome.

Richard Hunt.

CALVERT & JENKINSON LTD

— Building Contractor —

All Aspects of building work carried out from renovation to new builds, plastering to roofing.

www.cjbuildersltd.co.uk

cjbuildersltd@gmail.com

Andrew: 07837955869

Ryan: 07968463840



Swaledale Footcare

Meg Squires MCFHP MAFHP

Clinic Visits at Thornborough Hall Leyburn or
Home Visits Including:

Toenail Cutting

Corn Treatment

Removal of Hard Skin and Calluses

Treatment of Thickened and Fungal Nails

Phone : 01748 884795 or Mobile: 07929065602

Email meg.e.squires@gmail.com

Member of the British Association of Foot Health Professionals



REETH POST OFFICE

More than just a Post Office
Its a 25+ miles round trip to
the big shops.



SERVING OUR COMMUNITY

www.reethpostoffice.co.uk

SWALE HAIR SPA



LOOK GOOD

FEEL GREAT

BE-WELL.

We are open **Tuesday- Friday**, plus every 5th
Saturday.

Call us on: 01748 884627
Email us: info@swalehairspa.com
www.swalehairspa.com

MICHAEL GUY ELECTRICAL

FULLY QUALIFIED ELECTRICIAN

Over 20 years experience working in
the dales in all areas of
electrical work.

Some of my services include:

Complete rewires | Electrical installation
condition reports | Electrical vehicle
charging points | Additional & alterations
to socket & lighting points |

Replacement of storage heaters to modern
eco panel heaters.

Contact Michael :

T: 01748 886097 | M: 07980130017

Mail: info@michaeltguyelectrical.co.uk

Website: Michaelguyelectrical.co.uk

APPROVED ROINTE HEATER INSTALLER
NICEIC APPROVED CONTRACTOR

REETH AND DISTRICT GAZETTE LTD



Friends of the Dales Summer Events are free - find out more about who we are and what we do at: www.friendsofthedales.org.uk

Farm Walk: Cattle, Carbon, Conservation, Climate and Conversation

Wednesday 23 August, 10.30am - 3.30pm

Former Friends of the Dales trustee, Yorkshire Dales farmer, Anthony Bradley will lead a four mile guided walk around key parts of his 90 acre farm near Long Preston, to talk about some of the science behind grazing cattle in a traditional, rotational way - a methodology that makes economic sense as well as being carbon neutral. There will also be chance to observe habitat creation and look at soil and its role in the carbon cycle. Due to livestock, no dogs are allowed on this walk. Places limited.

Victoria Benn

To book email: victoria.benn@friendsofthedales.org.uk

G E BROWN & SON
BUILDING CONTRACTORS

All Building Work Carried Out
Damp Proof Course & Timber Treatment
Specialist Joinery Work
Work carried out by time-served qualified craftsmen

Email: gebrownson@f2s.com
Telephone: 01748 886356

A.J. CLACHER LTD
Established 1961
PLUMBING & HEATING ENGINEERS

- Gas, oil and solid fuel central heating installations
- All aspects of plumbing and gas installations
- Boiler servicing and repair • Landlord Gas Safety inspections
- Bathroom installations and Plumbing • Heat Pumps and Solar Heating

Unit 38 Forge Way, Cleveland Industrial Estate, Darlington DL1 2PB
Tel. 01325 468372 • E-Mail info@ajclacher.co.uk
www.ajclacher.co.uk

Lady Interior Decorator

Painting & Decorating, Competitive rates
Established 30 Years: Based in Richmond

Call Yvonne on: 07838378836

Email: yvonesdecor@hotmail.co.uk

Swaledale Memories—2

2010 was the year we all stayed in the farmhouse at Deer Park over the other side of the valley. The picture shows Daisy and Dylan, our grandchildren then 5 and 8, sitting on the grit bin near the museum in Reeth on the day we visited it.

John Dickson, Sevenoaks



REETH & DISTRICT COMMUNITY LUNCHEON CLUB 17TH AUGUST 2023 12.30 FOR 1.00PM

PLEASE COME ALONG TO ENJOY A 2 OR 3 COURSE LUNCH IN THE "KING'S ARMS" MARKET PLACE, REETH ON THE THURSDAY 17TH AUGUST 2023.

THE PRICES ARE FOR 2/3 COURSES OF HOME COOKING AT £10.00 OR £15.00 INCLUDING TEA & COFFEE.

WE WILL HAVE THE USE OF THE FUNCTION ROOM FROM 12.00 - 15.00 HRS.

ALL ARE WELCOME TO ENJOY GOOD FOOD AND HAVE A GOOD TIME MEETING NEW AND OLD FRIENDS.

PLEASE REMEMBER TO BOOK YOUR TABLE ON 01748 884259.



We're Recruiting!

Production Operatives

Permanent, full-time roles at our sites in Hawes and Ripon (no weekends)
Part-time / job shares considered.

Front of House Team & Kitchen Assistants

Full & part-time positions at our Visitor Centre in Hawes. Working across 5 days (no evenings)

Student and Seasonal Vacancies

Front of house and retail positions available

Excellent rates of pay and staff benefits.

Find out more at

wensleydale.co.uk/work-with-us



Cat Hole
Cottages

Beauty and tranquillity.

Quality and care.

Cat Hole Cottages | Cat Hole House | Thwaite
Richmond | North Yorkshire | DL11 6DR
Tel: 01748 886366

Discover our treasury of gorgeous cottages in Swaledale and Arkengarthdale.

Well-equipped, stylish and individual, our cottages offer guests a wonderful holiday in the midst of superb scenery!

**To find your perfect cottage
call Judith on 01748 886366**

www.catholecottages.com

Diary Dates

August

Sat 5th August - Duncan Chisholm & Hamish Napier - Reeth Memorial Hall 8pm

Sat 11th August - French Evening 7.00pm Reeth Memorial Hall

Sat 19th August - 10am to noon, Coffee Morning, Reeth Evangelical Congregational Church

Sat 19th August - Keld Resource Centre with Low Row and Keld URC Study Day

Sat 19th Aug - Wensleydale Concert Series Aysgarth Church, Mark Bebbington

Fri 25th August- Bob Fox - Reeth Memorial Hall 8pm

Fri 25th Aug - Muker Church Wine Party with Muker Silver Band. 7.30pm Muker Public Hall.

Sun 27th August - 3pm, Songs of Praise on Reeth green.

September

Sat 2nd Sept - Preloved sale Gunnerside Village Hall 11am-4pm refreshments available

Sum 3rd Sept - Rehearsal resume for Swale Singers, 3pm Reeth Memorial Hall

Sat 9th Sept- Chris Wood - Reeth Memorial Hall 8pm

Wed 13th Sept - Reeth Indoor Bowls resumes, Reeth Pavilion, 3pm

Thurs 21st Sept - Flu vaccinations Reeth Memorial Hall 9.30-11.30am

Thurs 28th Sept - Gunnerside TLC, 7.30pm a talk at Gunnerside Village Hall by Helen Guy on Women's role in the Dales during WW1 and WW2

Thurs 28th Sept - Keld Resource Centre with Low Row and Keld URC Study Day

Sat 30th Sept - Megson - Reeth Memorial Hall 8pm

Thurs 28th Sept—Macmillan Coffee Morning Gunnerside Village Hall from 10.30am until 12pm

Sat 30th Sept - 10am to noon, Harvest Coffee Morning & 6.30pm, Harvest Supper, Reeth Evangelical Congregational Church

October

Sat 7th Oct - Memorial Concert with Muker Silver Band and Swale Singers, Gunnerside Chapel, 7.30

Sat 14th Oct - John Tams - Reeth Memorial Hall 8pm

Thurs 19th Oct - Sean Lakeman & Kathryn Roberts - Reeth Memorial Hall 8pm

Market Place

Bosch Electric garden shredder, brilliant for shredding woody material. £25, Jackie 07885 498676

Langthwaite - Arkengarthdale

RED LION INN

Free House

Real Ales – Bar Snacks

Books & Maps

Tel. 01748 884218

Bellegreen Holiday Cottage

Overlooking Reeth Green
Sleeps 7 in 4 bedrooms

www.bellegreen.com

Keith@bellegreen.com

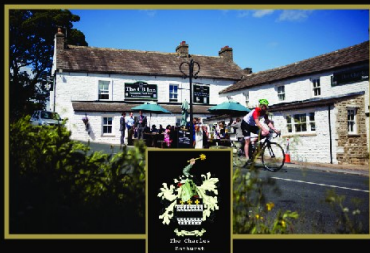
0115 9222257

REETH AND DISTRICT GAZETTE LTD

The Charles Bathurst Inn ARKENGARHTDALE

Outstanding fresh food served in a warm & friendly atmosphere.

19 en-suite bedrooms with amazing views.
Available for dinners, weddings & meetings.



- Open Lunchtime 12 – 2.30pm Tuesday – Sunday (Closed Monday lunch*)
- Evening Meals every night 6 – 8.30pm
- *Open Bank Holiday Mondays

FOR FURTHER DETAILS OR TO RESERVE A TABLE

Telephone: 0333 700 0779 Website: www.cbinn.co.uk

The Punch Bowl Inn

Outstanding fresh food served in a warm & friendly atmosphere with stunning views of Swaledale.



- Open Lunchtime Tuesday – Sunday (Closed Monday lunch*)
- Evening Meals Mon - Sat 5.30 – 8.30pm, Sun 5.30 – 8pm
- *Open Bank Holiday Mondays

FOR FURTHER DETAILS OR TO RESERVE A TABLE

Telephone: 0333 700 0779 Website: www.pbinn.co.uk

Fremington
dalesbikecentre.co.uk
tel:01748 884908

Cafe & Cakery

SOUPER TUESDAYS
Homemade soup, bread roll,
slice of cake & hot drink
Only: £7 every Tuesday

**SHOW STOPPER
FRIDAYS**

Every week a 'Showstopper' of a cake!

Dales 
Bike Centre

OPEN EVERYDAY!

Book a Stay
14 beds Bunk & Breakfast

New & Ex Hire Bike Sales
Mountain/Road Bike Hire
E-Bike Hire & Sales
Bike Servicing



FROG
bikes

Orange
MOUNTAIN BIKES